

# KÄRCHER

makes a difference

## FC 3d Cordless FC 3d Cordless Premium

中文

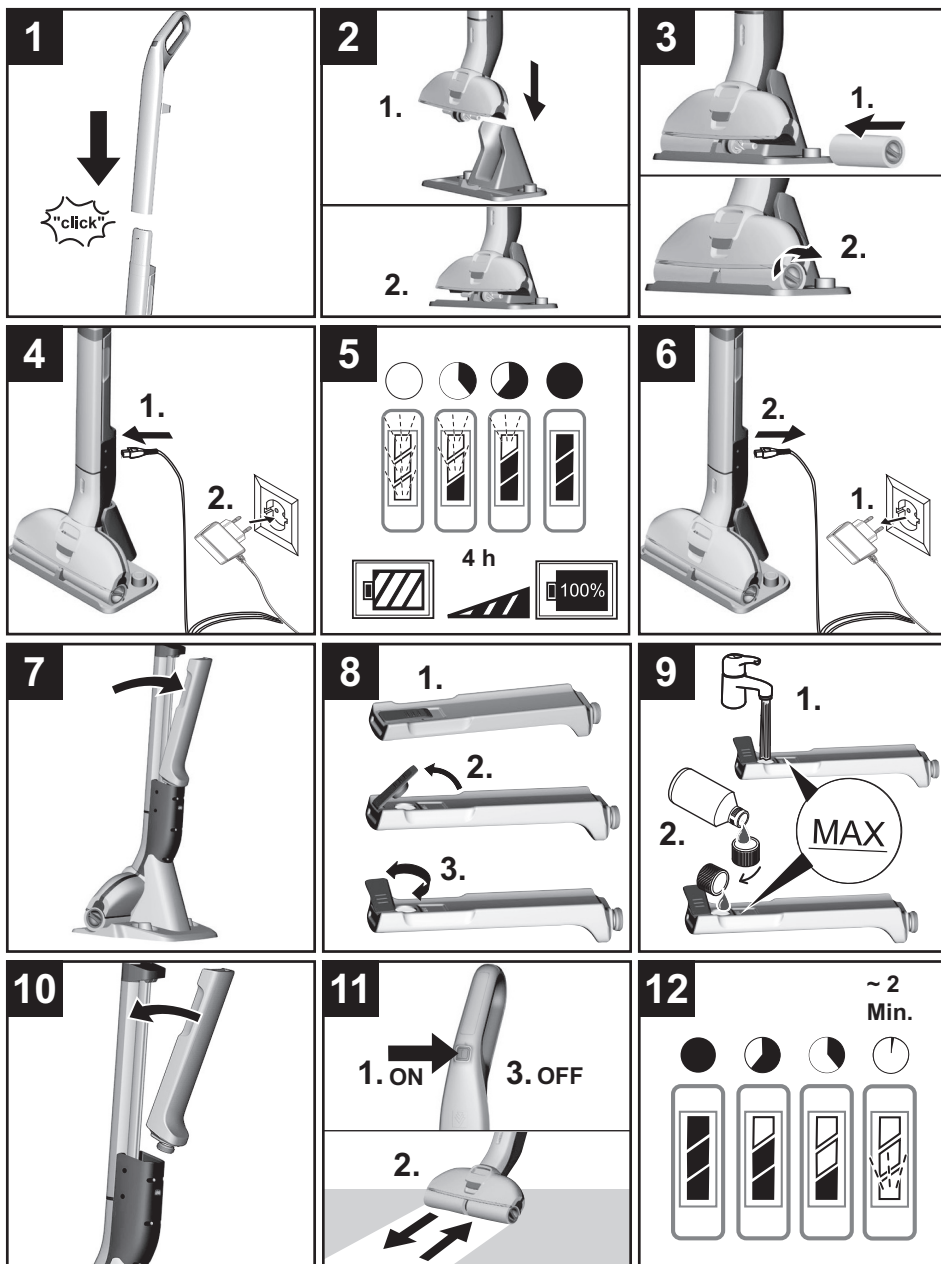
5

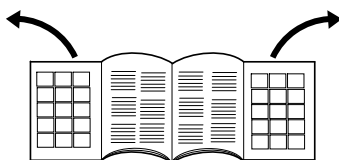
English

17



59684840 (10/18)







## 目录

一般事项	ZH	5
安全提示	ZH	5
设备说明	ZH	8
安装	ZH	10
调试	ZH	10
运行	ZH	10
保养与维护	ZH	12
故障排除	ZH	13
产品规格 / 参数	ZH	14

## 一般事项



在您第一次使用您的设备前，请先阅读并遵守本操作说明书为日后使用或其他所有者使用方便请妥善保管本说明书。

### 合乎规定的使用

地面清洗机仅用于私人家庭硬地板的清洁并仅可在防水的硬地板上使用。不要清洁对水敏感的铺地层，例如未经处理的软木地板（水分可能会渗入并损坏地板）。

该设备适用于清洁 PVC、油毡、瓷砖、石材、上油和打蜡的镶木地板、复合地板以及所有耐水的地面铺层。

### 环境保护



包装材料可以回收利用。请不要把包装材料与普通垃圾放在一起处理，而应妥善安排回收。



旧的设备中含有宝贵的可再利用的材料和物质不能进入自然环境。因此设备和包含的蓄电池不得作为生活垃圾处理。处理可以免费通过当地提供的回收和收集系统进行。

### 内部材料提示 (REACH)

最新的内部材料信息请您在如下链接中查找：

[www.kaercher.com/REACH](http://www.kaercher.com/REACH)

### 供货范围

设备的供货范围都已印制在包装上。因此，打开包装时请检查产品是否齐全。如有附件缺失或在运输过程中损坏，请联系经销商。

### 备件

只使用原厂配件和备件，它们能保证设备的安全和无故障运行。有关配件和备件的信息请登录 [www.kaercher.com](http://www.kaercher.com)。

## 质量保证

我们的质量保证条款适用于全球各分公司。在质量保证期内，如果您的产品发生了任何故障，我们都将为您提供免费维修，但是这种故障应当是由于机身材料或制造上的缺陷造成的。请您向经销商或者与您距离最近的经过授权的客户服务中心联系，提出保修请求，并提供相应的产品购买证明文件。

（地址详见背面。）

## 设备上的符号

### ⚠ ATTENTION!



### 注意

在清洁作业过程中加注清水箱时，请遵守下列操作步骤：



1. 首先将污水箱排空。



2. 然后给净水箱加水。



## 安全提示

- 除了操作说明书里的提示外，还要遵守立法的一般安全和事故防范规定。
- 设备上相应的警告、指示标志为无风险的运行提供重要提示。

## 危险程度

### ⚠ 危险

提示会导致人员重伤或死亡的直接威胁性危险。

### ⚠ 警告

提示可能导致人员重伤或死亡的危险状况。

### ⚠ 小心

提示可能导致轻度伤害的危险状况。

### 注意

提示可能产生财产损失的危险状况。

## 电气部件

### ⚠ 危险

- 不得将设备浸泡在水中！
- 使用前检查本设备和附件的状态是否正常。如果设备的状态存有疑问，则不允许使用设备。
- 当蓄电池充电器及充电线存在可见的损坏时请立即用原厂零件进行更换。
- 在对设备进行维修与维护之前，必须关闭设备并拔下电源插头。
- 只允许接受过授权的客户服务人员在上进行维修工作。
- 设备带有电气零部件，不得在流水下清洗。
- 充电插槽里面无导电材料（如：螺丝刀或其他类似的物品）。
- 不要接触任何触点或者电线。
- 铭牌上所标电压必须与供电电压一致。
- 不要在锐边上拉动电源线且不要挤压电源线。

### ⚠ 警告

- 本设备只能根据 IEC 60364 由电工连接到电气接口。
- 设备只能连接到交流电上。电压必须跟设备型号标牌上给出的电压一致。
- 出于安全考虑，原则上我们建议通过一个故障电流保护开关（最大 30mA）使用该设备。

## 充电器

### ⚠ 危险

电击危险。

- 决不能用湿手触及电源插头或者插座。
- 切勿使用脏污或受潮的充电器。
- 切勿在易爆环境中使用充电器。
- 切勿通过手持电源电缆来携带充电器。
- 在干燥空间内使用和保存蓄电池。
- 防止电源电缆受到高温、锐边、油污和机器的运转部件的影响。
- 避免使用带有复式插座的补偿导线以及多个设备的同时运行。
- 不要通过拉动电线将电源插头从插座上拔下。
- 切勿覆盖充电器并保持充电器的通风口通风。
- 请勿打开充电器。修理工作只能由经授权的专家完成。
- 充电器只能用于为允许的蓄电池组充电。
- 当蓄电池充电器及充电线存在可见的损坏时请立即用原厂零件进行更换。

## 蓄电池

### ⚠ 危险

电击危险。

- 蓄电池不得承受强光辐射、受热及火烤。

### ⚠ 警告

- 仅限使用随附的原装充电器或者经 KÄRCHER 公司许可的充电器给蓄电池充电。

请使用以下适配器：



- **不要打开蓄电池**，存在短路的危险，另外有可能溢出难闻的蒸汽或者有腐蚀性的液体。

## 安全处理

### △ 危险

- 用户必须按规定使用该设备。同时要重视地方现行的规定并在设备工作时照看好场所内的人员。
- 禁止在有爆炸危险的区域内运行本设备。
- 如在危险区域内使用清洗机，则应注意相应的安全规范。
- 如果清洗机之前掉落，存在明显的损坏或不密封，则不要使用该清洗机。
- 让儿童远离包装薄膜，否则会有窒息危险！

### △ 警告

- 儿童或未经指导的人员都不准操作本设备。
- 本设备不得让那些身体能力有限、感官能力弱或理解能力差或者缺乏经验和/或缺乏知识的人员使用，除非他们有专人监督或接受专人指导如何操作设备并了解其可能产生的危险。
- 儿童不得玩耍本设备。
- 照看好儿童，以确保他们不用设备玩耍。
- 清洗机处于开启状态或仍未冷却完全时，将其放置于儿童够不着的地方。
- 儿童未受看管不得进行清洁和用户保养。
- 只根据说明或插图操作或存放该设备！

### △ 小心

- 用设备或在设备上进行任何作业前要先确保设备的稳定性，以避免因设备翻倒而导致的事故或故障发生。
- 不得在水箱内加入溶剂、含有溶剂的液体或未经稀释的酸（如洗涤剂、汽油、油漆稀释剂和丙酮），因为它们会侵蚀设备上所使用的材料。
- 设备运行期间不可无人看管。
- 身体部位（例如头发、手指）务必远离旋转的滚刷。
- 在清洁清洁头时需保护双手，因为尖锐的物体（如碎片）会导致受伤危险。
- 保持连接电缆远离热源、锋利的边缘、油和移动的设备部件。

### 注意

- 只有在装入净水箱和污水箱之后，方可启动设备。
- 不允许用该设备抽吸锋利或较大的物体（如器皿碎片、鹅卵石、玩具部件）。
- 不得在清水箱中加注醋酸、除垢剂、香精油或类似物质。同样要注意不得吸入这些物质。
- 该设备仅可在带防水涂层的硬地板上使用（例如涂漆的镶木地板、涂釉的瓷砖、油毡）。
- 请勿使用该设备清洗地板垫或地毯。
- 不得将设备拖过对流式加热器的地面回风口。拖过地面回风口上时，设备无法吸入溢出的水。

- 当工休时间较长时和设备使用结束后关闭总开关 / 设备开关，并拔下充电器的电源插头。
- 温度低于 0 ° C 时无法运行机器。
- 防止机器受到雨淋。不要存放在室外区域内。

设备说明			
1	启动 / 关闭开关		
2	手柄		
3	手柄壁挂防滑装置		
4	手柄搭片		
5	手柄解锁装置		
6	新鲜水箱		
7	清水箱把手凹槽		
8	充电插座		
9	污水箱		
10	清洁辊的凹槽把手		
11	清洁辊		
12	污水箱罩		
13	污水箱罩锁紧按钮		
14	蓄电池显示		
15	带充电电线的充电器		
16	放置底座		
17	辊的存放		
18 *	洗涤剂	RM 536	30 ml
19 **	洗涤剂	RM 534	30 ml
20 **	洗涤剂	RM 536	500 ml
21	消泡剂	FoamStop	30 ml
11 **	清洁辊	2x	
* FC 3d 无绳版			
** FC 3d 高级无绳版			





## 安装

### → 请翻开插图页！



图1

- 将手柄装入设备主体内，直至插入至止挡处、听到卡入的声音。  
手柄必须牢牢固定在设备中。

## 调试

图2

- 为确保稳固安放，应将设备置于放置底座上。

## 安装辊子

图3

- 将清洁辊旋入辊支架直至止挡处。
- 注意辊内侧和辊支架的颜色应与设备相互匹配（例如蓝色对应蓝色）。
- 安装完成后，检查清洁辊是否安装牢固。

## 充电过程

### 提示

图22

设备可以在使用就绪状态下以及在取下手柄（进行收存 / 仓储）时充电。

图4

- 将充电器的充电线缆插入到设备的充电插座。
- 将充电器的电源插头插在插座中。

图5

- LED 指示灯显示蓄电池的当前充电状态。
- 给完全没电的蓄电池充电时，所有 3 个 LED 指示灯从下往上依次闪烁。
- 当蓄电池充电电量达到 1/3 时，最下面的 LED 持续亮起，两个上部 LED 继续闪烁。
- 当蓄电池充电电量达到 2/3 时，两个下部 LED 持续亮起，最上面的 LED 继续闪烁。
- 蓄电池充满电后，3 个 LED 指示灯接着持续发亮 60 分钟。经过这个时间后，LED 指示灯熄灭。

图6

- 充电结束后，将电源插头从插座上取下并且将充电电缆从充电插座上取下。

## 净水箱加水

图2

- 将设备置于放置底座上。

图7

- 抓住清水箱的把手凹槽，将清水箱从设备中取出。

图8

- 打开水箱封盖并转至一侧。

图9

- 在净水箱中加入冷水或温水（自来水）。
- 根据需要可以将 KÄRCHER 洗涤剂或护理剂加注到净水箱中。\*
- 加注时不得超出“MAX”标记。
- 关上水箱封盖。

图10

- 将净水箱安装到设备中。
- 净水箱必须牢牢固定在设备中。

### 注意

\* 注意洗涤剂和护理剂的推荐用量。

## 运行

### 一般操作说明

### 注意

图A

该设备只能抽吸灰尘和液体（最多 140 ml）。

图B

在开始作业前，先将地面清扫或抽吸一遍。这样便能在开始湿式清洁前去除地面上的灰尘或散落颗粒。

使用设备之前，要先在不显眼的位置检查地面的耐水性。不得清洁水敏性地面，例如未经处理的木塞板地板（水分可能会渗入并损坏地板）。

图C

为了避免在刚擦拭过的地面上留下脚印，要从里到外（门口）完成清洁工作。

- 通过来回移动设备清洗地板，清洗速度类似使用吸尘器时的速度。
- 若脏污严重，将设备慢慢拖过地板。不需要向设备施加压力。
- 供应灰色和黄色对辊时：两对对辊具备相同的功能性，但可用于不同的应用领域（例如颜色区分用于厨房和浴室）。

## 开始工作

### 注意

只要设备接通，清洁辊便开始转动。为了使设备不被自身移动，必须握紧手柄。确保净水箱已加水且污水箱已装入设备。

### 图11

- 按下设备开关（开 / 关），以启动吸尘器。
- 来回移动设备，直至滚刷充分润本设备。

## 蓄电池使用时间

### 图12

- 3 个 LED 灯亮起 - 3/3 蓄电池使用时间（完整的运行时间）。
- 2 个 LED 灯亮起 - 2/3 蓄电池使用时间。
- 1 个 LED 灯亮起 - 1/3 蓄电池使用时间。
- 蓄电池用完之前约 2 分钟，最下面的 LED 闪烁。
- 蓄电池用完并且设备关机后，最下面的 LED 加速闪烁 60 秒。

## 补加清洗液。

### 注意

在加注净水箱之前，请先将污水箱清空。这样，可避免污水箱过满溢出。

参见章节“加注清水箱”。

参见章节“清空污水箱”。

## 将污水箱排空

### 图2

- 将设备置于放置底座上。

### 图15

- 操作污水箱罩盖的锁定装置。
- 取下污水箱罩盖。

### 图16

- 从清洁头中取出污水箱。

### 图17

- 掀开两个污水箱腔室上方的翻盖。
- 将污水箱排空。

### 图18

- 根据脏污程度不同，用自来水清洁污水箱罩盖和污水箱。
- 可取下两个污水箱腔室的翻盖并单独清洁。
- 重新装上并关闭两个污水箱腔室的翻盖。

### 图21

- 将污水箱装入清洁头中。
- 操作污水箱罩盖的锁定装置，将罩盖装在清洁头上，然后松开锁定装置。
- 污水箱和污水箱罩盖必须牢牢固定在设备内或设备上。

## 中断运行

### 注意

当工休时间较长时，建议将设备置于放置底座上，以免因滚刷潮湿而对水敏性地面造成损伤。

### 图11

- 按下设备开关以将其关闭。

### 图2

- 将设备置于放置底座上。

## 关闭清洗机

### 图11

- 按下设备开关以将其关闭。

### 图2

- 将设备置于放置底座上。

### 注意

作业结束后清洁设备。

### 图14

- 如果清水箱内仍有水，则将水排空。

### 插图 15 至 24

- 清洁污水箱、污水箱罩盖和滚刷。

参见章节“清洁污水箱”。

参见章节“清洁清洁头”。

参见章节“清洁滚刷”。

## 设备储存

### 注意

为了避免产生气味，必须在存放设备时完全排空清水箱和污水箱。

将湿滚刷晾干（例如置于放置底座上），待晾干的湿滚刷不得放入密闭柜子内。

### 图 2

→ 将设备置于放置底座上。

### 图 22

→ 操作手柄的解锁装置。

→ 将手柄向上拉开。

→ 用搭片将手柄挂在设备上。

### 图 24

→ 将湿滚刷插在放置底座上晾干。

→ 在干燥的室内保管设备。

## 保养与维护

### 清洁污水箱

### 注意

为防止污垢附着在水箱内，必须定期清洁污水箱。

### 注意

不得在洗碗机内清洁污水箱罩盖：如果因冲洗过程而导致污水箱罩盖变形，使得刮板边缘无法再正确推压到滚刷上，则会影响设备的基本功能。清洁效果将变差。

### 图 11

→ 按下设备开关以将其关闭。

### 图 2

→ 将设备置于放置底座上。

插图 15 至 18

→ 将污水箱从设备中取出。

参见章节“清空污水箱”。

→ 用自来水清洁污水箱罩盖、污水箱和污水箱翻盖。

→ 可取下两个污水箱腔室的翻盖并单独清洁。

→ 或者也可以在洗碗机内清洁污水箱和污水箱翻盖。

### 提示

在洗碗机内清洁，可能会使污水箱翻盖的橡胶衬面变粘。但是密封性不受影响。

插图 19 至 20

→ 如果不需要继续运行设备，则同样需清洁滚刷。

参见章节“清洁滚刷”。

### 图 21

→ 完成清洁后，将污水箱连同翻盖和污水箱罩盖重新装入设备内。

## 清洁清洁头

### 注意

如有脏污，则清洁清洁头。

### 注意

不得在洗碗机内清洁污水箱罩盖：如果因冲洗过程而导致污水箱罩盖变形，使得刮板边缘无法再正确推压到滚刷上，则会影响设备的基本功能。清洁效果将变差。

### 图 11

→ 按下设备开关以将其关闭。

### 图 2

→ 将设备置于放置底座上。

### 图 15

→ 操作污水箱罩盖的锁定装置。

→ 取下污水箱罩盖。

### 图 18

→ 将污水箱罩盖放在自来水下清洗。

→ 清洁污水箱和滚刷。

参见章节“清洁污水箱”。

参见章节“清洁滚刷”。

→ 用湿布清洁滚刷驱动装置。

### 图 21

→ 将污水箱罩盖装入清洁头内。

### 清洁辊子

### 注意

每次使用完后，都应将滚刷放在水龙头下冲洗干净，或放在洗衣机中清洁，以免滚刷中残留清洁剂，否则长时间后可能会产生泡沫。

如果要设备放在地面上以取出滚刷，则必须将清水箱和污水箱排空。由此可以避免当放在地面上时，有液体从水箱中溢出。

### 图 11

→ 按下设备开关以将其关闭。

### 图 2

→ 将设备置于放置底座上。

### 图 19

→ 握住凹槽把手将清洁辊旋出。

### 图 20

→ 将清洁辊放在自来水下清洗。

或

→ 用洗衣机在最高 60 ° C 温度下清洗清洁辊。

### 注意

在洗衣机中清洗时，不得使用衣物柔顺剂。这样，微纤维不会被损坏且清洁辊可以保持其高清洁效率。

清洁辊不可在烘干机中烘干。

插图 23 至 24

- 清洁后，将滚刷插到放置底座上并使滚刷晾干。
- 通过事先拧干辊子尽可能缩短干燥的时间。
- 如果不需要继续运行设备，则同样需清洁污水箱罩盖和污水箱。
- 用湿布清洁滚刷驱动装置。

#### 洗涤剂 and 护理剂

##### 注意

使用不合适的洗涤剂和护理剂可能会损坏设备并导致失去保修。

##### 提示

根据需要，在清洁地板时使用 KÄRCHER 洗涤剂或护理剂。

- 有关洗涤剂和护理剂的用量，请见制造商的用量说明。
- 为了避免产生泡沫，先在净水箱加水，然后再加入洗涤剂或护理剂。
- 为使加注量不超出净水箱中的“MAX”标记，在注水时留出足够的空间以加入洗涤剂或护理剂。

#### 故障排除

故障原因常常很简单，使用以下概述即可自己排除故障。如有疑义或这里未列出，请联系指定客户服务人员。

##### 不得给蓄电池充电

- 充电插头 / 电源插头没有正确连接。
- 正确连接充电插头 / 电源插头。

##### 设备无法接通

- 蓄电池已空。
- 给设备充电。
- 检查充电电缆是否仍插在设备上。
- 因为充电电缆插入时无法进行操作，所以断开充电电缆。

##### LED 故障显示灯

接通设备时，最下面的 LED 闪烁并且设备没有运行。

- 蓄电池已空。
  - 给设备充电。
- 所有 LED 同时快速闪烁。
- 设备的电机发生阻滞（例如因为滚刷上的压力过大，或者因为正朝墙壁 / 角落移动）。
  - 设备关闭并重新启动。
- 或
- 使用错误或损坏的电源。

- 使用原装电源 / 更换损坏的电源。

三个 LED 先后隔 1 秒亮起。

- 使用时设备过热（例如：在高温环境下运行）。
- 暂停并且使设备冷却。
- 如果设备为此自动关闭：
- 暂停并且使设备冷却。
- 只有当设备相应冷却后，才能重新接通。

##### 滚刷过于干燥

滚刷未充分润湿。

- 通过在一个位置上来回移动，使滚刷润湿。

##### 设备不吸附污垢

水箱内没有水。

- 重新加水。
- 净水箱未正确安装在设备中。
- 安装净水箱，使其牢牢固定在设备中。
- 缺少或未正确安装清洁辊。
- 装入清洁辊，或将其旋入辊支架直至止挡处。

清洁辊脏污或磨损。

- 清洁清洁辊。

或

- 更换清洁辊。
- 忘记加入清洁剂、用量不当或使用了错误的清洁剂
- 仅使用 KÄRCHER 清洁剂，并注意用量适当。
- 未安装污水箱罩盖
- 检查污水箱罩盖是否正确固定。为此取下罩盖并重新装入。

##### 清洁头内和地板上有泡沫产生

##### 提示

在运行过程中，清洁头内产生少量泡沫属正常现象，不会影响功能。只有当泡沫过多时（例如地面上出现泡沫带），才需要采取进一步的措施。

清洁剂错误或用量不当。

- 仅使用 KÄRCHER 清洁剂，并注意用量适当。

设备的工作原理基于刮除滚刷上的污垢。在此过程中，污水箱内会积聚地板上的污垢和残余清洁剂。在特定情况下，这会导致泡沫产生。

- 用水彻底清除滚刷上的污垢和残余清洁剂。

图25  
图26  
图27

→ 有大量泡沫产生时，在清洁过程开始前，先在空的污水箱中加入 消泡剂。请遵守瓶身标签上的用量说明。

**清洁效果不佳**

滚刷脏污。  
→ 清洁滚刷。  
滚刷未充分润湿。  
→ 通过在一个位置上来回移动，使滚刷润湿。  
清洁剂错误或用量不当。  
→ 仅使用 KÄRCHER 清洁剂，并注意用量适当。  
地面上有其他清洁剂的残留物。  
→ 用水彻底清除滚刷上的残余清洁剂。  
→ 不使用清洁剂，用设备和干净的滚刷反复清洁地面。由此可清除地面上的残余清洁剂。

**辊子不转动**

辊子被卡住。  
→ 取下辊子并且检查是否有物体卡在辊子内。  
→ 检查辊子是否已旋入辊支架直至止挡处。  
→ 检查污水箱罩盖是否正确固定。为此取下罩盖并重新装入。

**吸水性能不理想**

未安装污水箱罩盖  
→ 检查污水箱罩盖是否正确固定。为此取下罩盖并重新装入。  
滚刷已磨损。  
→ 更换滚刷。

**设备污水泄漏**

污水箱过满溢出。  
→ 立即清空污水箱。  
污水箱未正确安装在设备中。  
→ 检查吸尘头罩盖是否牢牢固定在污水箱上。  
→ 检查污水箱翻盖是否正确封闭。

产品规格 / 参数	
电气接口	
电压	100–240 V 1~50–60 Hz
保护程度	IPX4
设备 保护等级	III
充电器防护等级	II
设备额定功率	40 瓦
蓄电池额定电压	7.2 V
蓄电池型号	锂离子
蓄电池充满电时的工作时间	20 分钟
空蓄电池的充电时间	4 小时
充电器输出电压	9.5 V
充电器输出电流	0.6 A
性能参数	
清洁辊每分钟转速	500 转 / 分钟
加水量	
净水箱	360 毫升
污水箱	140 毫升
尺寸	
重量（不含附件和清洁剂）	2.4 千克
长度	305 毫米
宽度	226 毫米
高度	1170 毫米
电线长度	
充电器	1800 毫米

**规格若有变更，恕不另行通知。**

# 保修卡

尊敬的用户：

非常感谢您选用 Kärcher 公司产品，我们愿竭力为您提供优质的服务。《保修卡》是保修产品的重要凭证，请您仔细填写此卡并妥善保管。如产品需要维修时，请提供此保修卡和发票原件。

购买日期：\_\_\_\_\_ 产品型号：\_\_\_\_\_

用户电话：\_\_\_\_\_ 产品序列号：\_\_\_\_\_

用户地址：\_\_\_\_\_ 经销商盖章：\_\_\_\_\_

服务热线：400-880-1060

服务邮箱：service@karcher.cn

官网地址：www.karcher.cn



扫一扫  
关注官方微信



扫一扫获取  
更多服务商信息

# KÄRCHER

makes a difference

《保修卡》涂改无效，遗失不补。

# 保修条款

本条款所属内容是依据《中华人民共和国消费者权益保护法》、《中华人民共和国产品质量法》及其它相关规定编写，仅适用于Kärcher公司在中国大陆销售的家用系列产品。

为了维护您的合法权益，请在购机时索要发票（即财税部门统一监制的发票）及相关凭证。

1. 本产品在正确使用、操作的情况下，如产品确实存在由于材料、设计和制造引起的质量问题，本公司提供保修，自购机之日起，保修期为12个月。
2. 用户申请保修服务时，需携带有效发票原件及保修卡原件，将产品及原装附件一起送至Kärcher授权服务点进行保修。
3. 如果下述任何一种情况发生，消费者将不能享受保修服务（即本保修条款不予适用），但可享受Kärcher公司授权之服务点提供的有偿服务：
  - 1) 超过保修有效期的；
  - 2) 无有效发票原件或保修凭证的，或保修凭证（或发票）与产品实物不符，或保修凭证（或发票）经涂改的；
  - 3) 非按产品使用说明要求使用、维护、保养产品而造成损坏的；
  - 4) 产品的自然磨损及易损易耗件（包括但不限于外壳、高压管、密封件、喷枪、喷嘴、单向阀、柱塞、吸尘管、刷子、扒头、过滤器、尘袋、传动皮带、齿轮、电池等）；
  - 5) 产品售出后由于运输或搬运造成损坏的；
  - 6) 未经Kärcher公司同意而对产品自行拆卸或自行修理而造成损坏的；
  - 7) 因电压、水源、使用环境不当而导致故障的；
  - 8) 因使用不正确的清洁介质而造成故障的；
  - 9) 由于不可抗力等自然因素造成故障的；
  - 10) 一切未经Kärcher公司许可对产品进行改造的；
  - 11) 产品无原厂标识，或原厂标贴上的订货号、序列号与Kärcher公司所提供的产品订货号、序列号不一致的；
  - 12) 其它因用户原因造成产品故障的。
4. Kärcher公司的家用产品只适用于家庭用途，凡用于非家庭场所，如商用或工业用途等的，将不能享受免费保修服务。
5. 往返Kärcher授权服务点的一切费用由用户自行承担（销售时，经销商有另外承诺的除外），家用系列产品不提供免费上门保修服务。
6. 保修期内，所有因维修被替换下来的零件、部件和附件等归Kärcher公司所有。
7. 保修期内，如所维修的部件已停产或淘汰，Kärcher公司有权使用同档次或更高档次的产品进行替换。
8. Kärcher公司对产品的保修义务，无论本保修条款或其它书面说明可能隐含或默认的保修义务，都应当被理解为已经包含在本保修条款所列的保修范围和保修期限内。
9. 保修期内，用户按本保修条款享受保修服务，此为用户因产品缺陷所受损失的唯一补救措施；换言之，Kärcher公司对用户的其它直接或间接损失（包括但不限于数据的丢失、期待的利益等）不承担任何责任。
10. Kärcher公司的经销商或其代理人以及Kärcher公司授权的服务点均无权代表Kärcher公司承担超出本保修条款范畴的义务，亦无权放弃Kärcher公司在本保修条款下的任何权力。
11. 中国有关法律的强制性规定适用于本保修条款。
12. Kärcher公司保留调整有关保修信息、产品功能及规范等的权利，恕不另行通知。

凯驰（上海）清洁系统有限公司  
2016年08月16日



## Contents

General information . . . . .	EN	5
Safety instructions . . . . .	EN	5
Description of the Appliance . . . . .	EN	9
Assembly . . . . .	EN	10
Commissioning . . . . .	EN	10
Operation . . . . .	EN	10
Care and maintenance . . . . .	EN	11
Troubleshooting . . . . .	EN	12
Technical specifications . . . . .	EN	13

## General information



Before using your appliance for the first time, read these original operating instructions, act in compliance with them, and keep them for later use or for subsequent owners.

### Proper use

Use the floor cleaner exclusively for cleaning hard floors in your private household and only on waterproof hard floors.

Do not clean water-sensitive floor coverings such as untreated cork floors (the moisture could penetrate and damage the floor).

The device is suitable for cleaning PVC, linoleum, tiled, stone, oiled and waxed parquet, laminate and all water-resistant floor coverings.

### Environmental protection



The packaging material can be recycled. Please do not place the packaging into the ordinary refuse for disposal, but arrange for the proper recycling.



Old appliance contain valuable recyclable materials and substances that must not be released into the environment. Thus, the appliance and the accumulator contained must not be disposed of via the domestic waste. The disposal can take place via locally available return and collection systems free of charge.

#### Notes about the ingredients (REACH)

You will find current information about the ingredients at:

[www.kaercher.com/REACH](http://www.kaercher.com/REACH)

### Scope of delivery

The scope of delivery of your appliance is illustrated on the packaging. Check the contents of the appliance for completeness when unpacking.

In the event of missing accessories or any transport damage, please contact your dealer.

## Spare parts

Only use original accessories and spare parts, they ensure the safe and trouble-free operation of the device. For information about accessories and spare parts, please visit [www.kaercher.com](http://www.kaercher.com).

## Warranty

The warranty terms published by the relevant sales company are applicable in each country. We will repair potential failures of your appliance within the warranty period free of charge, provided that such failure is caused by faulty material or defects in manufacturing. In the event of a warranty claim please contact your dealer or the nearest authorized Customer Service centre. Please submit the proof of purchase. (See address on the reverse)

## Symbols on the machine

### ATTENTION!



### ATTENTION

Please adhere to the following procedure for filling the fresh water tank during cleaning work:

#### 1st

First empty the waste water tank.

#### 2nd

Then fill the fresh water tank.

## Safety instructions

- *Apart from the notes contained herein the general safety provisions and rules for the prevention of accidents of the legislator must be observed.*
- *Warnings and notes that are attached on the appliance provide important notes for the safe operation.*

## Hazard levels

### **⚠ DANGER**

*Pointer to immediate danger, which leads to severe injuries or death.*

### **⚠ WARNING**

*Pointer to a possibly dangerous situation, which can lead to severe injuries or death.*

### **⚠ CAUTION**

*Pointer to a possibly dangerous situation, which can lead to minor injuries.*

### **ATTENTION**

*Pointer to a possibly dangerous situation, which can lead to property damage.*

## Electric components

### **⚠ DANGER**

- Do not immerse the device into water.
- Check the faultless condition of the appliance and the accessories before using it. Otherwise, the appliance must not be used.
- Immediately replace the charger with the charging cable in case of visible damage.
- Turn off the appliance and remove the mains plug prior to any care and maintenance work.
- Repair works may only be performed by the authorized customer service.
- The appliance contains electrical components - do not clean under running water.

- Do not insert conductive objects (such as screwdrivers or the like) into the charging socket.
- Do not touch contacts or wires.
- The voltage indicated on the type plate must correspond to the supply voltage.
- Do not scrape the power cord across sharp edges and ensure that it does not get pressed.

### **⚠ WARNING**

- The appliance may only be connected to an electric supply that has been installed by an electrician in accordance with IEC 60364.
- The appliance may only be connected to alternating current. The voltage must correspond with the type plate of the appliance.
- For safety reasons, we recommend that you operate the appliance only via a earth-leakage circuit breaker (max. 30 mA).

## Charger

### **⚠ DANGER**

*Risk of electric shock.*

- Never touch the mains plug and the socket with wet hands.
- Do not use the charger if dirty or wet.
- Do not operate the charger in explosive environment.
- Do not carry the charger by holding the mains cable.

- *Store and use the charger in dry rooms only.*
- *Protect the mains cable against heat, sharp edges, oil and moving parts of the machine.*
- *Avoid using extension wires with multiple sockets and simultaneous operation of multiple devices.*
- *Do not pull the plug from the socket by pulling the mains cable.*
- *Do not cover the charger and keep the air vents of the charger open.*
- *Do not open the charger. Get repairs done only by authorised experts.*
- *Use the charger only to charge approved battery packs.*
- *Immediately replace the charger with the charging cable in case of visible damage.*

### Battery

#### **⚠ DANGER**

*Risk of electric shock.*

- *Do not expose the battery to direct sunlight, heat or fire.*

#### **⚠ WARNING**

- *Charge the battery with the enclosed original charger or a charger approved by KÄRCHER only.*

*Use the following adaptor:*



- **Do not open the battery**, as there is a risk of an electrical

*shock; also, irritating or caustic vapors can escape.*

### Safe handling

#### **⚠ DANGER**

- *The user must use the appliance as intended. The person must consider the local conditions and must pay attention to other persons in the vicinity when working with the appliance.*
- *The appliance may not be operated in explosive atmospheres.*
- *If the appliance is used in hazardous areas the corresponding safety provisions must be observed.*
- *Do not use the appliance if it fell down, is visibly damaged or leaking.*
- *Keep packaging films away from children, there is a risk of suffocation!*

#### **⚠ WARNING**

- *The appliance must not be operated by children or persons who have not been instructed accordingly.*
- *This appliance is not intended for use by persons with limited physical, sensory or mental capacities or lacking experience and/or skills, unless such persons are accompanied and supervised by a person in charge of their safety or they have received precise instructions on the use of this appliance and have understood the resulting risks.*

- *Children must not play with this appliance.*
- *Supervise children to prevent them from playing with the appliance.*
- *Keep appliance out of reach of children as long as it is switched on or hasn't cooled down.*
- *Cleaning and user maintenance must not be performed by children without supervision.*
- *Operate or store the appliance only in accordance with the description or illustration!*

### **⚠ CAUTION**

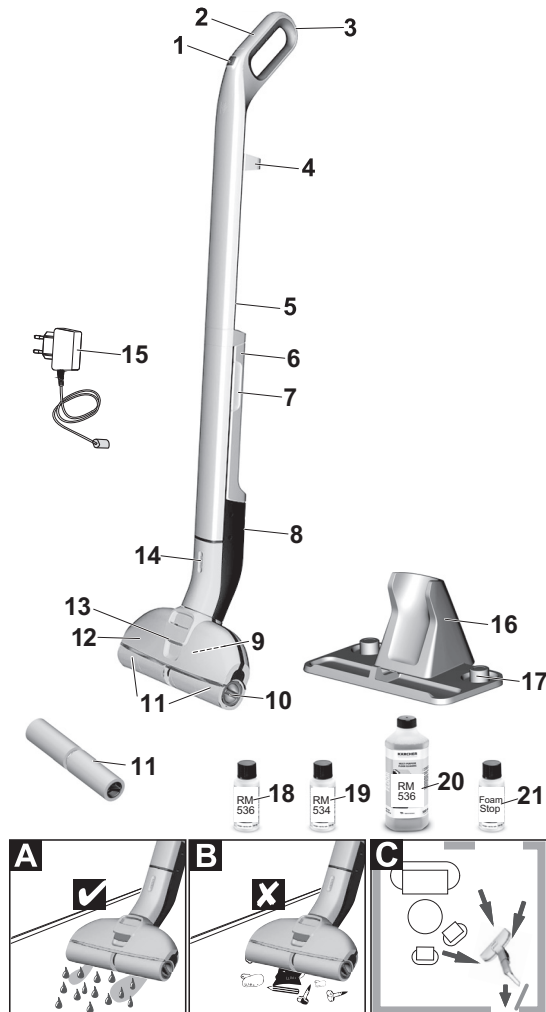
- *Create stability for the appliance prior to any work on or with the appliance to prevent accidents or damage.*
- *Never fill solvents, solvent-containing liquids or undiluted acids (e.g. detergents, petrol, paint thinner, and acetone) into the water reservoir as these substances corrode the materials used in the appliance.*
- *Never leave the appliance unattended as long as it is in operation.*
- *Keep parts of the body (e.g. hair, fingers) away from the rotating cleaning rollers.*
- *Protect your hands when cleaning the floor head due to a danger of injury from sharp objects (e.g. splinters).*
- *Keep connection cable away from heat, sharp edges, oil and moving parts.*

### **ATTENTION**

- *Only switch on the appliance when the fresh water tank and waste water tank are fitted.*
- *The device may not be used for vacuuming sharp objects or large objects (e.g. glass shards, gravel, toy parts).*
- *Do not fill the fresh water container with vinegar, decalcification agents, essential oils or similar substances. Also take care to ensure that these substances are not vacuumed.*
- *Only use this appliance on hard floors with waterproof coatings (e. g. varnished parquet, enamelled tiles, Linoleum).*
- *Do not use the appliance for cleaning of carpets or carpeted floors.*
- *Do not use the appliance over the floor grilles of convector heaters. The appliance is not able to take in the water discharged when used above grilles.*
- *In case of longer breaks in operation and after use, switch off the device at the main switch / device switch and pull the charger's mains plug.*
- *Do not operate the appliance at temperatures below 0 °C.*
- *Protect the unit from rain. Do not store outside.*

## Description of the Appliance

- |    |                                |       |                             |                |
|----|--------------------------------|-------|-----------------------------|----------------|
| 1  | ON/OFF switch                  | 14    | Battery indicator           |                |
| 2  | Handle                         | 15    | Charger with charging cable |                |
| 3  | Wall anti-slip handle          | 16    | Parking station             |                |
| 4  | Strap handle                   | 17    | Roller storage              |                |
| 5  | Handle release mechanism       | 18 *  | Detergent                   | RM 536 30 ml   |
| 6  | Fresh water tank               | 19 ** | Detergent                   | RM 534 30 ml   |
| 7  | Fresh water tank recessed grip | 20 ** | Detergent                   | RM 536 500 ml  |
| 8  | Charging socket                | 21    | Defoamer                    | FoamStop 30 ml |
| 9  | Waste water tank               | 11 ** | Cleaning rollers            | 2x             |
| 10 | Recessed grip cleaning roller  |       |                             |                |
| 11 | Cleaning rollers               |       |                             |                |
| 12 | Floor head cover               |       |                             |                |
| 13 | Floor head cover lock          |       |                             |                |
- \* FC 3d Cordless  
\*\* FC 3d Cordless Premium



## Assembly

→ Please unfold the pages with the diagrams!



Illustration 1

- Insert handle into the basic unit as far as it goes until it engages audibly.  
The handle must sit snugly into the appliance.

## Commissioning

Illustration 2

- Place the device in the parking station for safe storage.

### Installing the rollers

Illustration 3

- Screw the cleaning rollers onto the threaded rod up to the mechanical stop.
- Pay attention to the colour-codes on the inside of the roller and roller holder on the appliance (e.g. blue should match up with blue).
- After the installation, check to ensure that the cleaning rollers sit snugly.

### Charging process

Note

Illustration 22

The appliance can be loaded in operational condition or with the handle removed (for stowage/storage).

Illustration 4

- Plug the charging cable of the charger into the charging socket on the device.
- Plug the mains plug of the charger into a power outlet.

Illustration 5

- The LED indicator lights display the battery's current charging state.
- All 3 LED indicator lights flash from bottom to top when charging a completely empty battery.
- The lowermost LED lights up continuously when the battery is 1/3 charged, the two upper LEDs continue to flash.
- When the battery is 2/3 charged, the two lower LEDs light up continuously, the uppermost LED continues to flash.
- After the battery has been fully charged, the 3 LED indicator lights will continue to light constantly for 60 minutes. After this time, the LED indicator lights go out.

Illustration 6

- Once the battery is charged, pull the mains plug out of the socket and the charging cable out of the charging socket.

### Fill fresh water reservoir

Illustration 2

- Place the device in the parking station.

Illustration 7

- Grasp the fresh water tank by the recessed grip and remove it from the device.

Illustration 8

- Open the tank cap and turn it to the side.

Illustration 9

- Fill the fresh water tank with cold or lukewarm tap water.
- KÄRCHER detergents/care agents can also be added to the fresh water tank as required.\*
- Do not exceed the "MAX" marking when filling.
- Close tank lock.

Illustration 10

- Insert the fresh water container into the appliance.
- The fresh water tank must sit snugly into the appliance.

### ATTENTION

\*Follow the recommended dosage instructions on the detergent/care agent.

## Operation

### General information on the operation

### ATTENTION

Illustration A

The device can only vacuum dried dirt and liquids (max. 140 ml).

Illustration B

Brush or vacuum the floor before starting work. This removes dirt and loose particles from the floor before the wet cleaning commences.

Before use, check the floor for water consistency at suspect areas. Do not clean water-sensitive coatings, such as untreated cork floors (moisture ingress is possible which may damage the floor).

Illustration C

To avoid fresh footprints on the freshly-wiped floor, work backwards towards the door.

- Clean the floor by moving the appliance back and forth at a similar speed as if you were vacuum cleaning.
- If the floor is especially dirty, let the appliance glide slowly across the floor.  
Pressure does not need to be exerted on the device.
- For scope of delivery of the roller pads in grey and yellow: Both roller pads have the same functionality, they can be used for different areas of application (colour distinction, e.g. for kitchen and bathroom).

### Start working

### ATTENTION

After switching on the appliance, the cleaning rollers will begin to rotate. Hold the handle tight to prevent the appliance from moving forwards by itself.

Make sure the fresh water tank is filled with water and the waste water tank is fitted in the appliance.

Illustration 11

- To switch on the appliance press the on/off switch.
- Move the unit back and forth several times until the rollers are sufficiently moistened.

### Battery service life

Illustration 12

- 3 LEDs illuminated - 3/3 battery run time (full run time).
- 2 LEDs illuminated - 2/3 battery run time.
- 1 LED illuminated - 1/3 battery run time.
- The lowermost LED starts to flash approx. 2 minutes before the battery has to be charged.

- The last LED flashes quicker for 60 seconds when the battery is empty and the device has switched off.

### Refill detergent

#### ATTENTION

Before filling the fresh water tank, please empty the waste water tank. In this way you can avoid overflowing of the waste water tank.

See chapter "Filling the fresh water tank".

See Chapter "Emptying the waste water tank".

### Emptying the waste Water tank

Illustration **2**

- ➔ Place the device in the parking station.

Illustration **15**

- ➔ Actuate the floor head cover latch.
- ➔ Remove the floor head cover.

Illustration **16**

- ➔ Remove the waste water tank from the floor head.

Illustration **17**

- ➔ Fold the flaps over the two waste water tank chambers.
- ➔ Empty the waste water tank.

Illustration **18**

- ➔ Clean the floor head cover and waste water tank with tap water, depending on the degree of soiling.
- ➔ The flaps of the two waste water tank chambers can be removed and cleaned separately.
- ➔ Re-insert and close the flaps of the two waste water tank chambers.

Illustration **21**

- ➔ Insert the waste water tank into the floor head.
- ➔ Actuate the latch on the floor head cover, fit the cover onto the floor head and then release the latch.
- ➔ The waste water tank and floor head cover must sit firmly in and on the device.

### Interrupting operation

#### ATTENTION

To prevent damage to sensitive floors through wet rollers, we recommend placing the device in the parking station during longer work breaks.

Illustration **11**

- ➔ Switch off the appliance; press the on/off button to do so.

Illustration **2**

- ➔ Place the device in the parking station.

### Turning Off the Appliance

Illustration **11**

- ➔ Switch off the appliance; press the on/off button to do so.

Illustration **2**

- ➔ Place the device in the parking station.

#### ATTENTION

Clean the device after completing the work.

Illustration **14**

- ➔ Drain any water remaining in the fresh water tank.

Figure **15** to **24**

- ➔ Clean the waste water tank, floor head cover and cleaning rollers.  
See chapter "Cleaning the waste water tank".  
See chapter "Cleaning the floor head".  
See chapter "Cleaning the rollers".

### Storing the Appliance

#### ATTENTION

To prevent odours developing, the fresh water and waste water tank must be completely emptied prior to storing the appliance.

Allow wet rollers to dry in the air (e.g. on the parking station), do not place wet rollers in closed cupboards to dry.

Illustration **2**

- ➔ Place the device in the parking station.

Illustration **22**

- ➔ Press the handle release mechanism.
- ➔ Pull the handle upwards.
- ➔ Hook the handle to the appliance using the strap.

Illustration **24**

- ➔ Place the wet rollers on the parking station to dry.
- ➔ Store the appliance in a dry room.

### Care and maintenance

#### Clean the waste water tank

#### ATTENTION

The waste water tank must be cleaned regularly to ensure that dirt does not accumulate in the tank.

#### ATTENTION

Do not clean the floor head cover in a dishwasher: The basic function of the device can be impaired if the floor head cover is distorted by the dishwasher and the wiper edge no longer presses correctly onto the rollers. This will produce a worse cleaning result.

Illustration **11**

- ➔ Switch off the appliance; press the on/off button to do so.

Illustration **2**

- ➔ Place the device in the parking station.

Figure **15** to **18**

- ➔ Remove the waste water tank from the appliance. See Chapter "Emptying the waste water tank".
- ➔ Clean the floor head cover, waste water tank and waste water tank flaps with tap water.
- ➔ The flaps of the two waste water tank chambers can be removed and cleaned separately.
- ➔ Alternatively, the waste water tank and waste water tank flaps can be cleaned in a dishwasher.

#### Note

The rubber inlays of the waste water tank flaps can become sticky when washed in a dishwasher. This does not affect their sealing ability.

Figure **19** to **20**

- ➔ Also clean the rollers if the device is not going to be used further.

See chapter "Cleaning the rollers".

Illustration **21**

- ➔ After cleaning, fit the waste water tank with flaps and floor head cover back into the device.

## Cleaning the floor head

### ATTENTION

Clean the floor head if dirty.

### ATTENTION

*Do not clean the floor head cover in a dishwasher: The basic function of the device can be impaired if the floor head cover is distorted by the dishwasher and the wiper edge no longer presses correctly onto the rollers. This will produce a worse cleaning result.*

Illustration 11

- ➔ Switch off the appliance; press the on/off button to do so.

Illustration 2

- ➔ Place the device in the parking station.

Illustration 15

- ➔ Actuate the floor head cover latch.
- ➔ Remove the floor head cover.

Illustration 18

- ➔ Rinse off the floor head cover under running water.
- ➔ Clean the waste water tank and rollers.  
See chapter "Cleaning the waste water tank".  
See chapter "Cleaning the rollers".
- ➔ Clean the roller drive with a moist cloth.

Illustration 24

- ➔ Insert the floor head cover into the floor head.

## Cleaning the rollers

### ATTENTION

*The rollers should be washed under a tap or cleaned in a washing machine after each use to prevent accumulation of detergent residues in the rollers that can lead to the formation of foam over time.*

*The fresh water tank and waste water tank must be emptied if the device is laid on the floor in order to remove the rollers. This prevents liquids from escaping from the tanks while the device is lying on the floor.*

Illustration 11

- ➔ Switch off the appliance; press the on/off button to do so.

Illustration 2

- ➔ Place the device in the parking station.

Illustration 19

- ➔ Twist out the cleaning rollers from the recessed grip.

Illustration 20

- ➔ Clean the cleaning rollers under running water.
- or
- ➔ Wash the cleaning rollers in the washing machine up to 60°C.

### ATTENTION

*Do not use any soft detergents when cleaning in the washing machine. This avoids causing damage to the microfibres. It also preserves the high performance levels of the cleaning rollers.*

*The cleaning rollers are not suitable for the tumble dryer.*

Figure 23 to 24

- ➔ Once cleaned, place the rollers on the cleaning station storage and leave them to air dry.
- ➔ Drying time can be minimized by wringing out the rollers beforehand.
- ➔ Also clean the floor head cover and waste water tank if the device is not going to be used further.
- ➔ Clean the roller drive with a moist cloth.

## Detergents and care products

### ATTENTION

*The use of unsuitable cleaning and disinfecting agents can damage the appliance and will void the warranty.*

### Note

Add cleaning or disinfecting agent as required.

- ➔ When dosing the detergent and care product, follow the manufacturer's dosage instructions.
- ➔ To prevent foaming, first fill the fresh water tank with water then cleaning or disinfecting agent.
- ➔ To avoid exceeding the "MAX" fill level on the fresh water tank, leave room for the cleaning or disinfecting agent when filling with water.

## Troubleshooting

Often, failures have simple causes and you can do the troubleshooting yourself using the following overview. If you are in doubt or if the failure is not listed here please contact the authorized customer service.

### Battery is not charging

- Charging plug/mains plug not correctly connected.
- Connect charging plug/mains plug correctly.

### The device cannot be switched on

- Battery is empty.
- ➔ Charge the device.
- Check whether the charging cable is still plugged into the device.
- ➔ Take out charging cable, operation is not possible while charging cable is plugged in.

### LED fault display

Lowermost LED flashes when the device is switched on and does not start.

- Battery is empty.
  - ➔ Charge the device.
- All LEDs flash quickly simultaneously.
- The device has a motor blockage (e.g. due to excessive pressure on the rollers or through movement into a wall/corner).
  - ➔ Switch on/off the appliance again.

or

- Use of wrong or defective mains plug.
- ➔ Use original mains plug/replace defective mains plug.

The three LEDs light up sequentially in a 1-second cycle.

- Device too hot during use (e.g. when operating in high ambient temperatures).
- ➔ Take a break and let the device cool down.
- If the device also switches off:
- ➔ Take a break and let the device cool down.
- ➔ The device can only be switched on again once it has cooled down enough.

### Rollers are too dry

Rollers are not being sufficiently moistened.

- ➔ Moisten the rollers by moving back and forth over the same position.



### Appliance is not sucking up dirt

No water in the fresh water tank.

→ Refill water

Fresh water tank does not fit properly in the device.

→ Insert the fresh water tank so that it sits snugly in the appliance.

Cleaning rollers missing or not fitted correctly.

→ Fit the cleaning rollers or turn them onto the roller holder up to the mechanical stop.

Cleaning rollers are contaminated or worn.

→ Clean the cleaning rollers.

or

→ Replace the cleaning rollers.

The detergent has been forgotten, an incorrect dosage is being used or the incorrect detergent is being used

→ Use only KÄRCHER detergent and be sure to use the correct dosage.

Floor head cover not installed correctly

→ Check that the floor head cover is correctly seated. For this, remove the cover and then fit it back in place.

### Formation of foam on the floor head and the floor

#### Note

Slight foam formation in the floor head during operation is normal and does not impair functionality. Further measures are only necessary when there is excessive foam formation (e.g. streaks of foam on the floor).

Incorrect detergent or incorrect dosage.

→ Use only KÄRCHER detergent and be sure to use the correct dosage.

Device operation is based on the cleaning rollers removing dirt. Dirt and detergent residues from floor coverings collect in the waste water tank. This can lead to foam formation under some circumstances.

→ Remove all dirt and detergent residues from the rollers using water.

Illustration **25**

Illustration **26**

Illustration **27**

→ In the event of excessive foam formation, add FoamStop to the empty waste water tank before starting cleaning. Please observe the dosage instructions on the bottle label.

### Poor cleaning result

The rollers are dirty.

→ Clean the rollers.

Rollers are not being sufficiently moistened.

→ Moisten the rollers by moving back and forth over the same position.

Incorrect detergent or incorrect dosage.

→ Use only KÄRCHER detergent and be sure to use the correct dosage.

Foreign detergents are present on the floor.

→ Remove all detergent residues from the rollers using water.

→ Clean the floor several times using the device and clean rollers, without using detergent. This removes detergent residues from the floor

### Rollers do not turn

Rollers are blocked.

→ Remove rollers and check if an object has become stuck in the rollers.

→ Check that the rollers are screwed in as far as they will go onto the roller holder.

→ Check that the floor head cover is correctly seated. For this, remove the cover and then fit it back in place.

### Water vacuuming not optimum

Floor head cover not installed correctly

→ Check that the floor head cover is correctly seated. For this, remove the cover and then fit it back in place.

The rollers are worn out.

→ Replace the rollers.

### Appliance is leaking waste water.

Waste water tank is overfilled.

→ Empty the waste water tank right away.

Waste water tank does not fit properly in the appliance.

→ Check that the floor head cover is firmly seated on the waste water tank.

→ Check that the waste water tank flaps are correctly closed.

## Technical specifications

### Electrical connection

Voltage	100-240 V 1~50-60 Hz
Protection class	IPX4
Device Protective class	III
Charger protection class	II
Rated power of appliance	40 W
Nominal battery voltage	7.2 V
Battery type	Li-Ion
Operating time with full charge	20 min
Charging time for empty battery	4 h
Charger initial voltage:	9.5 V
Output current, charger	0.6 A

### Performance data

Roller revolutions per minute	500 rpm
-------------------------------	---------

### Filling quantity

Fresh water tank	360 ml
waste water tank	140 ml

### Dimensions

Weight (without accessories and cleaning fluids)	2.4 kg
Length	305 mm
Width	226 mm
Height	1170 mm
Cable length	
Charger	1800 mm

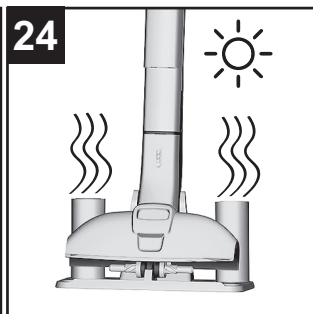
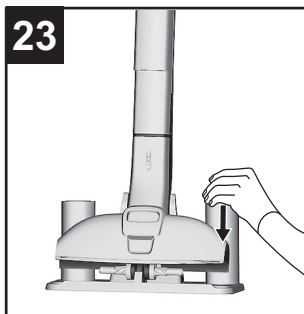
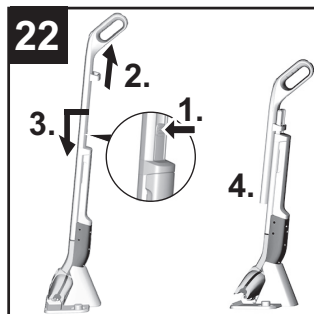
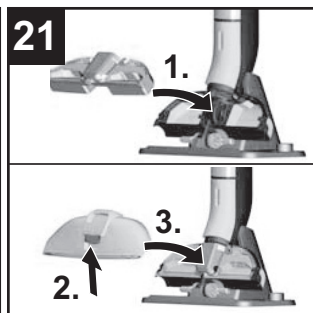
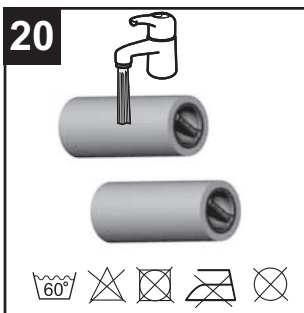
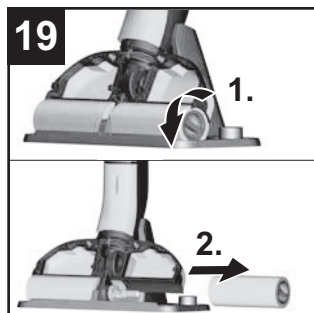
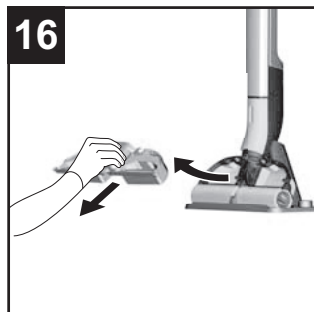
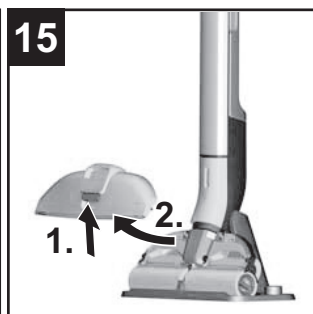
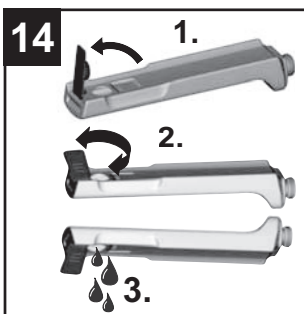
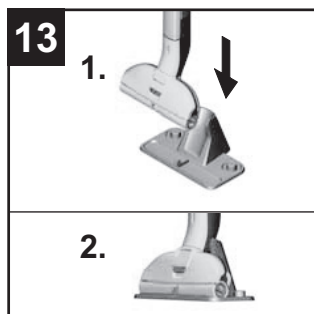
**Subject to technical modifications!**



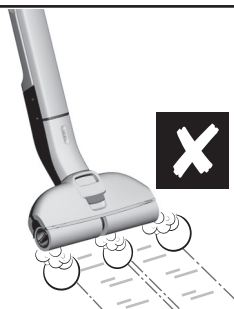








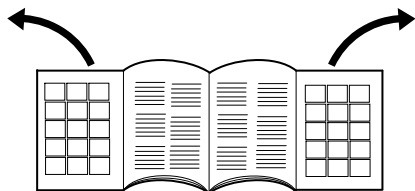
25



26



27





**[www.kaercher.com/dealersearch](http://www.kaercher.com/dealersearch)**

**Alfred Kärcher SE & Co. KG**

Alfred-Kärcher-Str. 28-40  
71364 Winnenden (Germany)

Tel.: +49 7195 14-0

Fax: +49 7195 14-2212

