

KÄRCHER

makes a difference

FC 5 Cordless / FC 5 Cordless Premium

多功能洗地吸尘器

中文

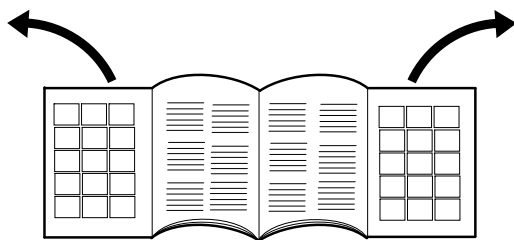
5

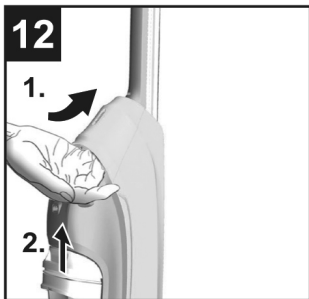
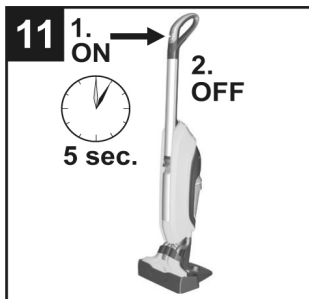
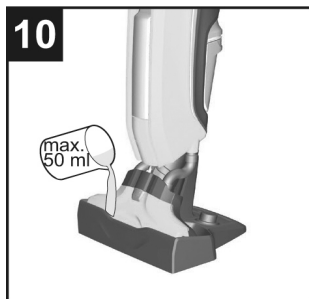
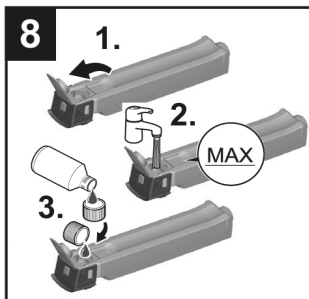
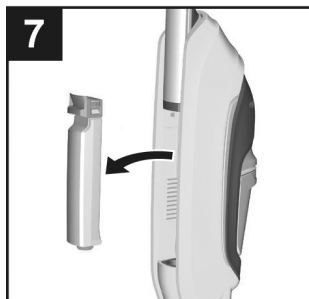
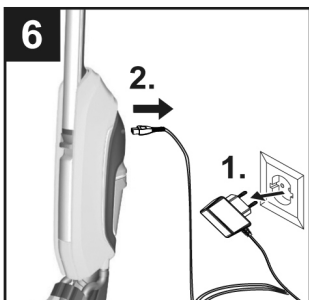
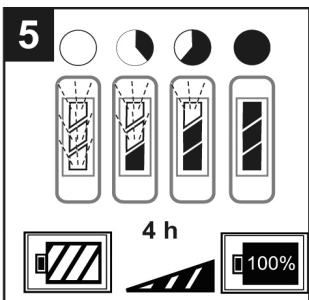
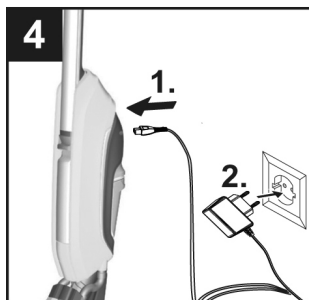
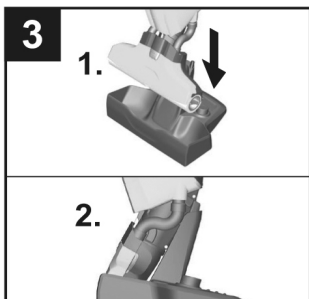
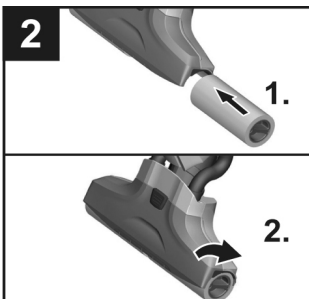
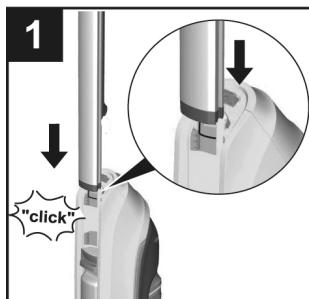
English

19



59686200 (11/18)





目录

一般事项	ZH	5
安全提示	ZH	6
设备说明	ZH	8
安装	ZH	10
调试	ZH	10
运行	ZH	10
保养与维护	ZH	12
故障排除	ZH	14
产品规格 / 参数	ZH	16

一般事项



在您第一次使用您的设备前，请先阅读并遵守本操作说明书为日后使用或其他所有者使用方便请妥善保管本说明书。

合乎规定的使用

地面清洗机仅用于私人家庭硬地板的清洁并仅可在防水的硬地板上使用。不要清洁对水敏感的铺地层，例如未经处理的软木地板（水分可能会渗入并损坏地板）。

该设备适用于清洁 PVC、油毡、瓷砖、石材、上油和打蜡的镶木地板、复合地板以及所有耐水的地面铺层。

环境保护



包装材料可以回收利用。请不要把包装材料与普通垃圾放在一起处理，而应妥善安排回收。



旧的设备中含有宝贵的可再利用的材料和物质不能进入自然环境。因此设备和包含的蓄电池不得作为生活垃圾处理。处理可以免费通过当地提供的回收和收集系统进行。

电气和电子设备通常包含使用不当或错误处理时可能对人身健康和环境带来潜在危险的组成部分。然而这些组成部分是设备正常运行所必需的。使用该符号标记的设备不得与生活垃圾一起处理。

内部材料提示 (REACH)

最新的内部材料信息请您在如下链接中查找：

www.kaercher.com/REACH

供货范围

设备的供货范围都已绘制在包装上。因此，打开包装时请检查产品是否齐全。如有附件缺失或在运输过程中损坏，请联系经销商。

备件

只使用原厂配件和备件，它们能保证设备的安全和无故障运行。

有关配件和备件的信息请登录

www.kaercher.com。

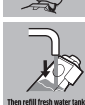
质量保证

我们的质量保证条款适用于全球各分公司。在保证期内，如果您的产品发生了任何故障，我们都将为您提供免费维修，但是这种故障应当是由于机身材料或制造上的缺陷造成的。请您向经销商或者与您距离最近的经过授权的客户服务处联系，提出保修请求，并提供相应的产品购买证明文件。

（地址详见背面。）

设备上的符号

△ ATTENTION! 注意



在进行清洁时，不得超出污水箱中的“MAX”标记。

请遵守以下操作步骤：

1. 首先将污水箱排空。

2. 然后给净水箱加水。

安全提示

- 除了操作说明书里的提示外，还要遵守立法的一般安全和事故防范规定。
- 设备上相应的警告、指示标志为无风险的运行提供重要提示。

危险程度

△ 危险

提示会导致人员重伤或死亡的直接威胁性危险。

△ 警告

提示可能导致人员重伤或死亡的危险状况。

△ 小心

提示可能导致轻度伤害的危险状况。

注意

提示可能产生财产损失的危险状况。

电气部件

△ 危险

- 不得将设备浸泡在水中！
- 使用前检查本设备和附件的状态是否正常。如果设备的状态存有疑问，则不允许使用设备。
- 当蓄电池充电器及充电线存在可见的损坏时请立即用原厂零件进行更换。
- 在对设备进行维修与维护之前，必须关闭设备并拔下电源插头。
- 只允许接受过授权的服务人员在设备上维修工作。
- 设备带有电气零部件，不得在流水下清洗。

- 充电插槽里面无导电材料（如：螺丝刀或其他类似的物品）。
- 不要接触任何触点或者电线。
- 铭牌上所标电压必须与供电电压一致。
- 不要在锐边上拉动充电电缆且不要挤压充电电缆。

△ 警告

- 本设备只能根据 IEC 60364 由电工连接到电气接口。
- 设备只能连接到交流电上。电压必须跟设备型号标牌上给出的电压一致。
- 出于安全考虑，原则上我们建议通过一个故障电流保护开关（最大 30mA）给设备充电。

充电器

△ 危险

电击危险。

- 决不能用湿手触及电源插头或者插座。
- 切勿使用脏污或受潮的充电器。
- 切勿在易爆环境中使用充电器。
- 切勿通过手持电源电缆来携带充电器。
- 在干燥空间内使用和保存蓄电池。
- 防止电源电缆受到高温、锐边、油污和机器的运转部件的影响。
- 避免使用带有复式插座的补偿导线以及多个设备的同时运行。
- 不要通过拉动电线将电源插头从插座上拔下。
- 切勿覆盖充电器并保持充电器的通风口通风。

- 请勿打开充电器。修理工作只能由经授权的专家完成。
- 充电器只能用于为允许的蓄电池组充电。
- 当蓄电池充电器及充电线存在可见的损坏时请立即用原厂零件进行更换。

蓄电池

⚠ 危险

电击危险。

- 蓄电池不得承受强光辐射、受热及火烤。

⚠ 警告

- 仅限使用随附的原装充电器或者经 KÄRCHER 公司许可的充电器给蓄电池充电。

请使用以下适配器：



- 不要打开蓄电池，存在短路的危险，另外有可能溢出难闻的蒸汽或者有腐蚀性的液体。

安全处理

⚠ 危险

- 用户必须按规定使用该设备。同时要重视地方现行的规定并在设备工作时照看好场所内的人员。
- 禁止在有爆炸危险的区域内运行本设备。
- 如在危险区域内使用清洗机，则应注意相应的安全规范。
- 如果清洗机之前掉落，存在明显的损坏或不密封，则不要使用该清洗机。
- 让儿童远离包装薄膜，否则会有窒息危险！

⚠ 警告

- 儿童或未经指导的人员都不准操作本设备。
- 本设备不得让那些身体能力有限、感官能力弱或理解能力差或者缺乏经验和 / 或缺乏知识的人员使用，除非他们有专人监督或接受专人指导如何操作设备并了解其可能产生的危险。
- 儿童不得玩耍本设备。
- 照看好儿童，以确保他们不用设备玩耍。
- 清洗机处于开启状态或仍未冷却完全时，将其放置于儿童够不着的地方。
- 儿童未受看管不得进行清洁和用户保养。
- 只根据说明或插图操作或存放该设备！

⚠ 小心

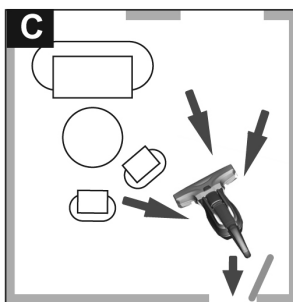
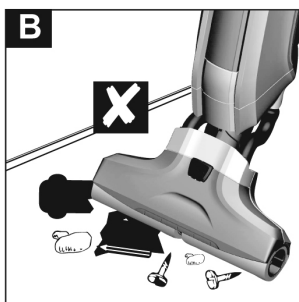
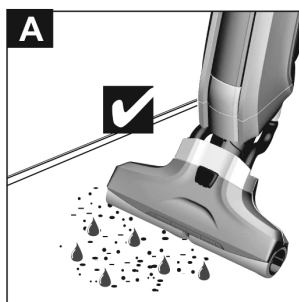
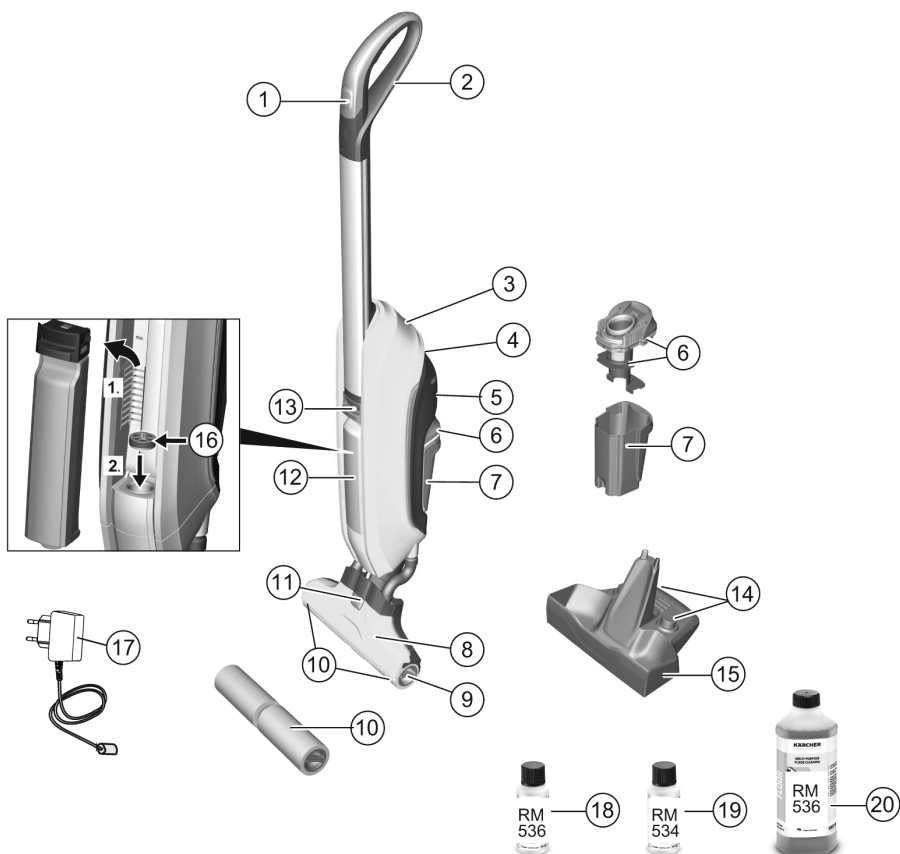
- 用设备或在设备上进行任何作业要先确保设备的稳定性，以避免因设备翻倒而导致的事故或故障发生。
- 不得在水箱内加入溶剂、含有溶剂的液体或未经稀释的酸（如洗涤剂、汽油、油漆稀释剂和丙酮），因为它们会侵蚀设备上所使用的材料。
- 设备运行期间不可无人看管。
- 身体部位（例如头发、手指）务必远离旋转的滚刷。
- 在清洁吸尘头时对手部采取保护措施，因为尖锐物体会造成受伤危险（例如碎片）。
- 保持连接电缆远离热源、锋利的边缘、油和移动的设备部件。

注意

- 只有在装入净水箱和污水箱之后，方可启动设备。
- 使用该设备不得吸入尖锐或较大的物体（例如碎片、鹅卵石、玩具部件）。
- 不得向净水箱中加入乙酸、除垢剂、精油或类似物质。此外，还需要注意不要吸入这些物质。
- 该设备仅可在带防水涂层的硬地板上使用（例如涂漆的镶木地板、涂釉的瓷砖、油毡）。
- 请勿使用该设备清洗地板垫或地毯。
- 不得将设备拖过对流式加热器的地面回风口。拖过地面回风口上时，设备无法吸入溢出的水。
- 当工休时间较长时和设备使用结束后关闭总开关 / 设备开关，并拔下充电器的电源插头。
- 温度低于 0 ° C 时无法运行机器。
- 防止机器受到雨淋。不要存放在室外区域内。

设备说明

- 1 启动 / 关闭开关
- 2 手柄
- 3 蓄电池显示
- 4 手柄
- 5 充电插座
- 6 污水箱 / 分离器的盖子
- 7 污水箱
- 8 清洁头盖板
- 9 清洁辊的凹槽把手
- 10 清洁辊
- 11 清洁头锁定装置
- 12 净水箱
- 13 净水箱手柄
- 14 辊的存放
- 15 清洁 / 停驻站
- 16 过滤器滤芯
- 17 带充电电线的充电器
- 18 * 洗涤剂 RM 536 30 ml
- 19 ** 洗涤剂 RM 534 30 ml
- 20 ** 洗涤剂 RM 536 500 ml
- * FC 5 Cordless
- ** FC 5 Cordless Premium



安装

→ 请翻开插图页！



图1

- 将手柄装入设备主体内，直至插入至止挡处、听到卡入的声音。
手柄必须牢牢固定在设备中。

调试

安装辊子

图2

- 将清洁辊旋入辊支架直至止挡处。
- 注意辊内侧和辊支架的颜色应与设备相互匹配（例如蓝色对应蓝色）。
- 安装完成后，检查清洁辊是否安装牢固。

充电过程

图3

- 为确保稳定性，将设备放置到清洁站中。

图4

- 将充电器的充电线缆插入到设备的充电插座。
- 将充电器的电源插头插在插座中。

图5

- LED 指示灯显示蓄电池的当前充电状态。
- 给完全没电的蓄电池充电时，所有 3 个 LED 指示灯从下往上依次闪烁。
- 当蓄电池充电电量达到 1/3 时，最下面的 LED 持续亮起，两个上部 LED 继续闪烁。
- 当蓄电池充电电量达到 2/3 时，两个下部 LED 持续亮起，最上面的 LED 继续闪烁。
- 蓄电池充满电后，3 个 LED 指示灯接着持续发亮 60 分钟。经过这个时间后，LED 指示灯熄灭。

图6

- 充电结束后，将电源插头从插座上取下并且将充电电缆从充电插座上取下。

净水箱加水

图7

- 握住手柄，将净水箱从设备中取出。

图8

- 打开水箱封盖。
- 在净水箱中加入冷水或温水（自来水）。
- 根据需要可以将 KÄRCHER 洗涤剂或护理剂加注到净水箱中。*
参见章节“洗涤剂和护理剂”。
- 加注时不得超出“MAX”标记。
- 关上水箱封盖。

图9

- 将净水箱安装到设备中。
- 净水箱必须牢牢固定在设备中。

注意

* 注意洗涤剂和护理剂的推荐用量。

运行

一般操作说明

注意

图A

设备仅允许抽吸灰尘和液体（最大 250 毫升）。

图B

在开始工作前，清除地面上的物体，例如碎片、鹅卵石、螺栓或玩具部件。

使用设备之前，要先在不显眼的位置检查地面的耐水性。不得清洁水敏性地面，例如未经处理的水塞板地板（水分可能会渗入并损坏地板）。

图C

为了避免在刚擦拭过的地面上留下脚印，要从里到外（门口）完成清洁工作。

- 握住手柄，使设备倾斜 60 度。
- 通过来回移动设备清洗地板，清洗速度类似使用吸尘器时的速度。
- 若脏污严重，将设备慢慢拖过地板。
- 供应灰色和黄色对辊时：两对对辊具备相同的功能性，但可用于不同的应用领域（例如颜色区分用于厨房和浴室）。

启动设备

图11

- 只是短促按下接通开关。
- 约 1-2 秒后，辊子开始旋转并且设备处于待机运行状态。

开始工作

注意

只要设备接通，清洁辊便开始转动。为了使设备不被自身移动，必须握紧手柄。确保净水箱已加水且污水箱已装入设备。

图10

→ 为了使滚轮快速地被浸湿，用一个量杯向清洁站内注入 50 ml 的清水。

图11

→ 接通设备，并使其在清洁站内运行 5 秒钟。

这样，设备具有最佳湿度，以便实现快速清洁。

→ 按下设备开关以将其关闭。

图12

→ 握住把手，将设备从清洁站中取出，然后放在地板上。

→ 握紧设备手柄。

图13

→ 按下设备开关（开 / 关），以启动吸尘器。

蓄电池使用时间

图14

— 3 个 LED 灯亮起 - 3/3 蓄电池使用时间（完整的运行时间）。

— 2 个 LED 灯亮起 - 2/3 蓄电池使用时间。

— 1 个 LED 灯亮起 - 1/3 蓄电池使用时间。

■ 运行结束前 5 分钟，由于转速发生变化，辊子发出一个信号。

■ 蓄电池用完之前约 2.5 分钟，最下面的 LED 闪烁。

■ 运行结束前 1.5 分钟，设备自动关机。

■ 通过重新启动可将剩余的 1.5 分钟用于站内的设备清洁。

参见章节“设备的冲洗清洁”。

■ 电池已空并且设备关机后，最下面的 LED 灯仍闪烁 10 秒。

补加清洗液。

注意

在加注净水箱之前，请先将污水箱清空。这样，可避免污水箱过满溢出。

参见章节“清空污水箱”。

图3

→ 将设备放入清洁站中。

图7

→ 握住手柄，将净水箱从设备中取出。

图8

→ 打开水箱封盖。

→ 在净水箱中加入冷水或温水（自来水）。

→ 根据需要添加洗涤剂或护理剂。

→ 加注时不得超出“MAX”标记。

→ 关上水箱封盖。

图9

→ 将净水箱安装到设备中。

净水箱必须牢牢固定在设备中。

将污水箱排空

注意

为了避免污水箱过满溢出，必须定期检查水位。不得超出“MAX”标记。

图3

→ 将设备放入清洁站中。

图15

→ 握住污水箱的下部手柄，同时用大拇指向下按压上部手柄。

→ 取出污水箱。

图16

→ 取下污水箱的盖子。

→ 将污水箱排空。

→ 根据脏污程度，用自来水清洗盖子 / 分离器和污水箱。

→ 盖上污水箱的盖子。

盖子必须牢牢固定在污水箱上。

图17

→ 将污水箱安装到设备中。

污水箱必须牢牢固定在设备中。

中断运行

图13

→ 按下设备开关以将其关闭。

图3

→ 将设备放入清洁站中。

注意

为确保稳定性，在工作中断时将设备始终放置在清洁站或停驻站中。稳定性不足可能会使设备倾翻，液体溢出，从而导致地板损坏。

关闭清洗机

图13

→ 按下设备开关以将其关闭。

图3

→ 将设备放入清洁站中。

图15

→ 拆下污水箱。

注意

工作结束后，应冲洗设备进行清洁。参见章节“设备的冲洗清洁”。

图23

→ 将设备完全清空。

图15

直至

图16

→ 将污水箱排空。

参见章节“清空污水箱”。

→ 如果净水箱或清洁站中仍有水，则将水排空。

设备储存

注意

为了避免产生气味，必须在存放设备时完全排空清水箱和污水箱。

图12

→ 握住把手将设备提至存放地点。

图3

→ 为确保稳定性，将设备放置到清洁站中。

→ 在干燥的室内保管设备。

保养与维护

设备的冲洗清洁

注意

工作结束后，应始终在清洁站上使用净水冲洗设备。通过冲洗过程，设备得到最佳清洁，并可避免设备中污垢和细菌积聚或产生难闻的气味。

图13

→ 按下设备开关以将其关闭。

图3

→ 将设备放入清洁站中。

→ 冲洗期间用一些冷自来水或温自来水加注净水箱，以完全清除抽吸管道和吸头开口的残留清洁剂。

→ 将净水箱安装到设备中。

图16

→ 取出并清空污水箱。

参见章节“清空污水箱”。

→ 在量杯中加入 200 ml 水。

→ 给清洁站加水。

→ 根据需要，在冲洗过程中可添加相应的 KÄRCHER 洗涤剂。

→ 按下设备开关（开 / 关），以启动吸尘器。

→ 让设备持续运行 30-60 秒，直至清洁站中的水完全被吸入。此时，冲洗过程结束。

提示

设备接通时间越长，保留在清洁辊中的残留水分越少。

→ 按下设备开关以将其关闭。

→ 如果净水箱中仍有水，则将净水箱取出并清空。

图16

→ 将污水箱排空。

参见章节“清空污水箱”。

→ 如果清洁站中仍有水，则将水排空。

清洁辊子

注意

在将设备放置在地面上以便取出清洁辊之前，必须将净水箱和污水箱清空。这样可避免在将设备放置在地面上时液体从水箱中漏出。

提示

若脏污严重，则可以单独对清洁辊进行清洁。

图13

→ 按下设备开关以将其关闭。

→ 如果净水箱中仍有水，则将净水箱取出并清空。

→ 将净水箱排空。

图16

→ 将污水箱排空。

图19

→ 握住凹槽把手将清洁辊旋出。

图20

→ 将清洁辊放在自来水下清洗。

或

→ 用洗衣机在最高 60 ° C 温度下清洗清洁辊。

注意

在洗衣机中清洗时，不得使用衣物柔顺剂。这样，微纤维不会被损坏且清洁辊可以保持其高清洁效率。

清洁辊不可在烘干机中烘干。

图21

→ 清洁后，将辊子插到清洁站的辊子存放处并且使辊子晾干。

→ 通过事先拧干辊子尽可能缩短干燥的时间。

清洁吸尘头

注意

当脏污严重或有物体（例如石子、碎片）进入清洁头时，必须清洁吸尘头。这些物体会造成工作期间发出咔嚓声或堵塞抽吸通道，从而降低吸附能力。

图13

→ 按下设备开关以将其关闭。

图19

→ 拆除清洁辊。

参见章节“辊的清洁”。

图22

→ 按下清洁头锁定装置。

→ 取下清洁头罩盖。

→ 将清洁头罩盖放在自来水下清洗。

→ 如有必要，清除附着在抽吸通道和清洁罩盖槽上的颗粒。

→ 用湿布清洁设备清洁头。

→ 将吸尘头罩盖固定在清洁头上。

提示

将吸尘头罩盖固定在清洁头上时必须听到其卡入声。

图2

→ 将清洁辊旋入辊支架直至止挡处。

参见章节“辊的清洁”。

清洁污水箱

注意

为了防止分离器被灰尘和污物堵塞或水箱内积聚污垢，必须定期清洁污水箱。

图13

→ 按下设备开关以将其关闭。

图3

→ 将设备放入清洁站中。

图15

直至

图16

→ 将污水箱从设备中取出。

参见章节“清空污水箱”。

→ 用自来水清洗盖子 / 分离器和污水箱。

→ 也可以在洗碗机中清洗污水箱。

图17

→ 清洗后，将污水箱连同盖子一起重新装入设备中。

洗涤剂 and 护理剂

注意

使用不合适的洗涤剂和护理剂可能会损坏设备并导致失去保修。

提示

根据需要在清洁地板时使用 KÄRCHER 洗涤剂或护理剂。

→ 有关洗涤剂和护理剂的用量，请见制造商的用量说明。

图8

→ 为了避免产生泡沫，先在净水箱加水，然后再加入洗涤剂或护理剂。

→ 为使加注量不超出净水箱中的“MAX”标记，在注水时留出足够的空间以加入洗涤剂或护理剂。

故障排除

故障原因常常很简单，使用以下概述即可自己排除故障。如有疑问或这里未列出，请联系指定客户服务人员。

不得给蓄电池充电

- 充电插头 / 电源插头没有正确连接。
- ➔ 正确连接充电插头 / 电源插头。

设备无法接通

- 蓄电池已空。
- ➔ 给设备充电。
- 检查充电电缆是否仍插在设备上。
- ➔ 因为充电电缆插入时无法进行操作，所以断开充电电缆。

LED 故障显示灯

接通设备时，最下面的 LED 闪烁并且设备没有运行。

- 电池已空
 - ➔ 给设备充电。
- 所有 LED 同时快速闪烁。
- 使用错误或损坏的电源。
 - ➔ 使用原装电源 / 更换损坏的电源。
- 或
- 使用时设备过热（例如：在高温环境下运行）。
 - ➔ 暂停并且使设备冷却。
 - 如果设备为此自动关闭：
 - ➔ 暂停并且使设备冷却。
 - ➔ 只有当设备相应冷却后，才能重新接通。

清洁辊缺乏净水加湿

未安装滤芯。
（见设备说明的图示）

- ➔ 拆下净水箱，以销钉朝上的方式将滤芯装入。

滤芯被装反

- ➔ 拆下滤芯，以销钉朝上的方式将其装入。

由于污垢沉积，吸水软管被堵住。

- ➔ 小心地将吸水软管从吸水头和主机上拆下。
- ➔ 将吸水软管放入冷水中 10 - 20 分钟。
- ➔ 用一个钝硬的物体并 / 或在流水下清洁吸水软管。

设备不吸附污垢

水箱中没有水。

- ➔ 重新加水。
- 净水箱未正确安装在设备中。
- ➔ 安装净水箱，使其牢牢固定在设备中。

缺少或未正确安装清洁辊。

图 2

- ➔ 装入清洁辊，或将其旋入辊支架直至止挡处。

清洁辊脏污或磨损。

- ➔ 清洁清洁辊。
- 或
- ➔ 更换清洁辊。

辊子不转动

辊子被卡住。

图 19

- ➔ 取下辊子并且检查是否有物体卡在辊子内。
- ➔ 检查辊子是否已旋入辊支架直至止挡处。

接通时发出很响的嘎吱声

辊子太干。

- ➔ 润湿辊子或用停驻站内的 50 ml 水润湿设备。

吸尘头中发出咔哒声

清洁头中有物品（例如石子或碎片）。

图 22

- ➔ 将清洁头罩盖取下并清洁。
- 参见章节“清洁清洁头”。

抽吸功率减弱

清洁头的抽吸通道和开槽堵塞。

图 22

- ➔ 将清洁头罩盖取下并清洁。
- 参见章节“清洁清洁头”。

设备污水泄漏

污水箱过满溢出。

图 15

直至

图 16

- ➔ 立即清空污水箱。
- 参见章节“清洁污水箱”。

污水箱未正确安装在设备中。

- ➔ 检查污水箱上的盖子是否牢固。
- 参见章节“清洁污水箱”。

分离器堵塞。

- ➔ 取下污水箱的盖子，并清洁分离器。
- 参见章节“清洁污水箱”。

污水箱分离器滤网在清洁时已受损。

- ➔ 更换分离器。

设备在地板上留下印记

洗涤剂或护理剂不适用于该设备或用量不当。

→ 请使用制造商推荐的洗涤剂和护理剂。

参见章节 “ 洗涤剂和护理剂 ”。

→ 注意制造商的用量说明。

未对辊子进行首次润湿或首次润湿时间过短，因此没有完全润湿（因此辊子只部分进行清洁）。

图10

→ 完全润湿辊子。

取下主设备上的手柄

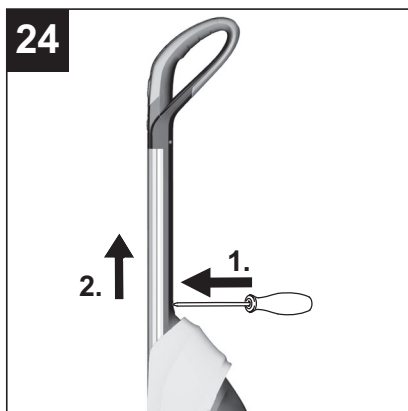
注意

装配后不要再将手柄从主设备上取下。

仅当发送设备进行维修时，才允许将手柄从主设备上取下。

图24

→ 以 90 度角将螺丝刀插入手柄背面的小孔并且取下手柄。



注意

请注意防止主设备与手柄之间的连接电缆损坏。

产品规格 / 参数	
电气接口	
蓄电池额定电压	25, 2 V
保护程度	IPX4
设备	III
保护等级	
充电器防护等级	II
设备额定功率	165 瓦
蓄电池型号	锂离子
蓄电池充满电时的工作时间	约 20 分钟
空蓄电池的充电时间	4 小时
充电器输出电压	30 V
充电器输出电流	0, 6 A
性能参数	
清洁辊每分钟转速	500 转 / 分钟
加水量	
新鲜水箱	400 毫升
清洁站	200 毫升
尺寸	
重量（不含附件和清洁剂）	4, 4 千克
长度	320 毫米
宽度	270 毫米
高度	1220 毫米
电线长度	
充电器	1500 毫米

规格若有变更，恕不另行通知。

保修卡

尊敬的用户：

非常感谢您选用 Kärcher 公司产品，我们愿竭力为您提供优质的服务。《保修卡》是保修产品的重要凭证，请您仔细填写此卡并妥善保管。如产品需要维修时，请提供此保修卡和发票原件。

购买日期：_____ 产品型号：_____

用户电话：_____ 产品序列号：_____

用户地址：_____ 经销商盖章：_____

服务热线：400-880-1060

服务邮箱：service@karcher.cn

官网地址：www.karcher.cn



扫一扫
关注官方微信



扫一扫获取
更多服务商信息

KÄRCHER

makes a difference

《保修卡》涂改无效，遗失不补。

保修条款

本条款所属内容是依据《中华人民共和国消费者权益保护法》、《中华人民共和国产品质量法》及其它相关规定编写，仅适用于Kärcher公司在中国大陆销售的家用系列产品。

为了维护您的合法权益，请在购机时索要发票（即财税部门统一监制的发票）及相关凭证。

1. 本产品在正确使用、操作的情况下，如产品确实存在由于材料、设计和制造引起的质量问题，本公司提供保修，自购机之日起，保修期为12个月。
2. 用户申请保修服务时，需携带有效发票原件及保修卡原件，将产品及原装附件一起送至Kärcher授权服务点进行保修。
3. 如果下述任何一种情况发生，消费者将不能享受保修服务（即本保修条款不予适用），但可享受Kärcher公司授权之服务点提供的有偿服务：
 - 1) 超过保修有效期的；
 - 2) 无有效发票原件或保修凭证的，或保修凭证（或发票）与产品实物不符，或保修凭证（或发票）经涂改的；
 - 3) 未按产品使用说明书要求使用、维护、保养产品而造成损坏的；
 - 4) 产品的自然磨损及易损易耗件（包括但不限于外壳、高压管、密封件、喷枪、喷嘴、单向阀、柱塞、吸尘管、刷子、扒头、过滤器、尘袋、传动皮带、齿轮、电池等）；
 - 5) 产品售出后由于运输或搬运造成损坏的；
 - 6) 未经Kärcher公司同意而对产品自行拆卸或自行修理而造成损坏的；
 - 7) 因电压、水源、使用环境不当而导致故障的；
 - 8) 因使用不正确的清洁介质而造成故障的；
 - 9) 由于不可抗力等自然因素造成故障的；
 - 10) 一切未经Kärcher公司许可对产品进行改造的；
 - 11) 产品无原厂标识，或原厂标贴上的订货号、序列号与Kärcher公司所提供的产品订货号、序列号不一致的；
 - 12) 其它因用户原因造成产品故障的。
4. Kärcher公司的家用产品只适用于家庭用途，凡用于非家庭场所，如商用或工业用途等的，将不能享受免费保修服务。
5. 往返Kärcher授权服务点的一切费用由用户自行承担（销售时，经销商有另外承诺的除外），家用系列产品不提供免费上门维修服务。
6. 保修期内，所有因维修被替换下来的零件、部件和附件等归Kärcher公司所有。
7. 保修期内，如所维修的部件已停产或淘汰，Kärcher公司有权使用同档次或更高档次的产品进行替换。
8. Kärcher公司对产品的保修义务，无论本保修条款或其它书面说明可能隐含或默认的保修义务，都应当被理解为已经包含在本保修条款所列的保修范围和保修期限内。
9. 保修期内，用户按本保修条款享受保修服务，此为用户因产品缺陷所受损失的唯一补救措施；换言之，Kärcher公司对用户的其它直接或间接损失（包括但不限于数据的丢失、期待的利益等）不承担任何责任。
10. Kärcher公司的经销商或其代理人以及Kärcher公司授权的服务点均无权代表Kärcher公司承担超出本保修条款范畴的义务，亦无权放弃Kärcher公司在本保修条款下的任何权力。
11. 中国有关法律的强制性规定适用于本保修条款。
12. Kärcher公司保留调整有关保修信息、产品功能及规范等的权利，恕不另行通知。

凯驰（上海）清洁系统有限公司
2016年08月16日

Contents

General information	EN	5
Safety instructions	EN	5
Description of the Appliance	EN	9
Assembly	EN	10
Commissioning	EN	10
Operation	EN	10
Care and maintenance	EN	11
Troubleshooting	EN	13
Technical specifications	EN	14

General information



Before using your appliance for the first time, read these original operating instructions, act in compliance with them, and keep them for later use or for subsequent owners.

Proper use

Use the floor cleaner exclusively for cleaning hard floors in your private household and only on waterproof hard floors.

Do not clean water-sensitive floor coverings such as untreated cork floors (the moisture could penetrate and damage the floor).

The device is suitable for cleaning PVC, linoleum, tiled, stone, oiled and waxed parquet, laminate and all water-resistant floor coverings.

Environmental protection



The packaging material can be recycled. Please do not place the packaging into the ordinary refuse for disposal, but arrange for the proper recycling.



Old appliance contain valuable recyclable materials and substances that must not be released into the environment. Thus, the appliance and the accumulator contained must not be disposed of via the domestic waste. The disposal can take place via locally available return and collection systems free of charge.

Electrical and electronic devices often contain components which could potentially pose a danger to human health and the environment if handled or disposed of incorrectly. However, these components are necessary for the proper operation of the device. Devices marked with this symbol must not be disposed of with regular household rubbish.

Notes about the ingredients (REACH)

You will find current information about the ingredients at:

www.kaercher.com/REACH

Scope of delivery

The scope of delivery of your appliance is illustrated on the packaging. Check the contents of the appliance for completeness when unpacking.

In the event of missing accessories or any transport damage, please contact your dealer.

Spare parts

Only use original accessories and spare parts, they ensure the safe and trouble-free operation of the device. For information about accessories and spare parts, please visit www.kaercher.com.

Warranty

The warranty terms published by the relevant sales company are applicable in each country. We will repair potential failures of your appliance within the warranty period free of charge, provided that such failure is caused by faulty material or defects in manufacturing. In the event of a warranty claim please contact your dealer or the nearest authorized Customer Service centre. Please submit the proof of purchase. (See address on the reverse)

Symbols on the machine

⚠ ATTENTION! ATTENTION

The "MAX" marking on the waste water tank must not be exceeded when cleaning work is being performed. Please observe the following procedure:

1.



First empty dirt water tank.

2.



Then fill fresh water tank.

Safety instructions

- Apart from the notes contained herein the general safety provisions and rules for the prevention of accidents of the legislator must be observed.
- Warnings and notes that are attached on the appliance provide important notes for the safe operation.

Hazard levels

⚠ DANGER

Pointer to immediate danger, which leads to severe injuries or death.

⚠ WARNING

Pointer to a possibly dangerous situation, which can lead to severe injuries or death.

⚠ CAUTION

Pointer to a possibly dangerous situation, which can lead to minor injuries.

ATTENTION

Pointer to a possibly dangerous situation, which can lead to property damage.

Electric components

⚠ DANGER

- *Do not immerse the device into water.*
- *Check the faultless condition of the appliance and the accessories before using it. Otherwise, the appliance must not be used.*
- *Immediately replace the charger with the charging cable in case of visible damage.*
- *Turn off the appliance and remove the mains plug prior to any care and maintenance work.*
- *Repair works may only be performed by the authorized customer service.*
- *The appliance contains electrical components - do not clean under running water.*
- *Do not insert conductive objects (such as screwdrivers or the like) into the charging socket.*
- *Do not touch contacts or wires.*

- *The voltage indicated on the type plate must correspond to the supply voltage.*
- *Do not scrape the charger across sharp edges and ensure that it does not get pressed.*

⚠ WARNING

- *The appliance may only be connected to an electric supply that has been installed by an electrician in accordance with IEC 60364.*
- *The appliance may only be connected to alternating current. The voltage must correspond with the type plate of the appliance.*
- *For safety reasons, we recommend that you charge the appliance only via a earth-leakage circuit breaker (max. 30 mA).*

Charger

⚠ DANGER

Risk of electric shock.

- *Never touch the mains plug and the socket with wet hands.*
- *Do not use the charger if dirty or wet.*
- *Do not operate the charger in explosive environment.*
- *Do not carry the charger by holding the mains cable.*
- *Store and use the charger in dry rooms only.*
- *Protect the mains cable against heat, sharp edges, oil and moving parts of the machine.*

- *Avoid using extension wires with multiple sockets and simultaneous operation of multiple devices.*
- *Do not pull the plug from the socket by pulling the mains cable.*
- *Do not cover the charger and keep the air vents of the charger open.*
- *Do not open the charger. Get repairs done only by authorised experts.*
- *Use the charger only to charge approved battery packs.*
- *Immediately replace the charger with the charging cable in case of visible damage.*

Battery

⚠ **DANGER**

Risk of electric shock.

- *Do not expose the battery to direct sunlight, heat or fire.*

⚠ **WARNING**

- *Charge the battery with the enclosed original charger or a charger approved by KÄRCHER only.*

Use the following adaptor:



- ***Do not open the battery***, as there is a risk of an electrical shock; also, irritating or caustic vapors can escape.

Safe handling

⚠ **DANGER**

- *The user must use the appliance as intended. The person must consider the local conditions and must pay attention to other persons in the vicinity when working with the appliance.*
- *The appliance may not be operated in explosive atmospheres.*
- *If the appliance is used in hazardous areas the corresponding safety provisions must be observed.*
- *Do not use the appliance if it fell down, is visibly damaged or leaking.*
- *Keep packaging films away from children, there is a risk of suffocation!*

⚠ **WARNING**

- *The appliance must not be operated by children or persons who have not been instructed accordingly.*
- *This appliance is not intended for use by persons with limited physical, sensory or mental capacities or lacking experience and/or skills, unless such persons are accompanied and supervised by a person in charge of their safety or they have received precise instructions on the use of this appliance and have understood the resulting risks.*
- *Children must not play with this appliance.*

- *Supervise children to prevent them from playing with the appliance.*
- *Keep appliance out of reach of children as long as it is switched on or hasn't cooled down.*
- *Cleaning and user maintenance must not be performed by children without supervision.*
- *Operate or store the appliance only in accordance with the description or illustration!*

⚠ CAUTION

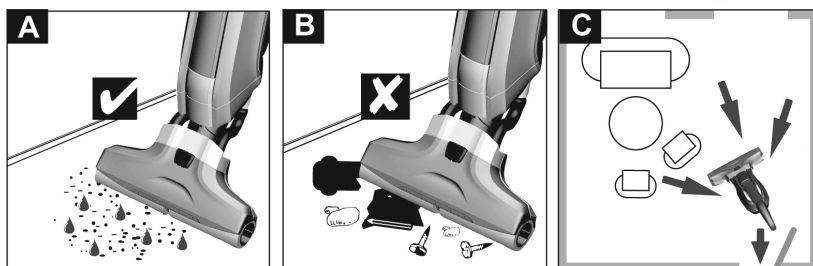
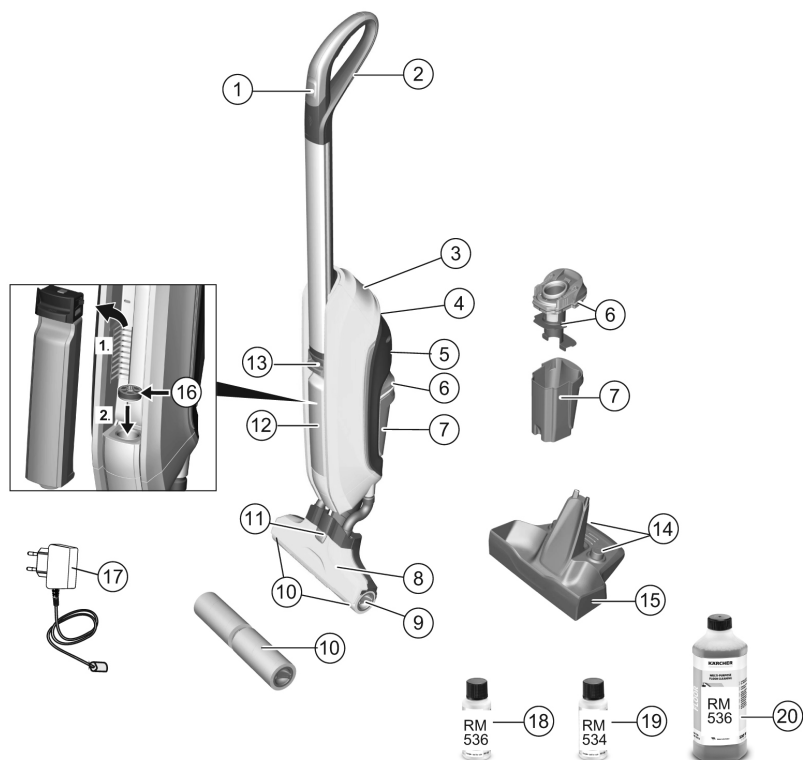
- *Create stability for the appliance prior to any work on or with the appliance to prevent accidents or damage.*
- *Never fill solvents, solvent-containing liquids or undiluted acids (e.g. detergents, petrol, paint thinner, and acetone) into the water reservoir as these substances corrode the materials used in the appliance.*
- *Never leave the appliance unattended as long as it is in operation.*
- *Keep parts of the body (e.g. hair, fingers) away from the rotating cleaning rollers.*
- *Keep your hands protected while cleaning the suction head- risk of injury from sharp objects (e.g. splinters).*
- *Keep connection cable away from heat, sharp edges, oil and moving parts.*

ATTENTION

- *Only switch on the appliance when the fresh water tank and waste water tank are fitted.*
- *The appliance must not be used for the intake of sharp or large objects (e.g. shards, pebbles, toy parts).*
- *Do not add acetic acids, descaling agents, essential oils or similar substances to the fresh water tank. Also ensure that the substances are not drawn in.*
- *Only use this appliance on hard floors with waterproof coatings (e. g. varnished parquet, enamelled tiles, Linoleum).*
- *Do not use the appliance for cleaning of carpets or carpeted floors.*
- *Do not use the appliance over the floor grilles of convector heaters. The appliance is not able to take in the water discharged when used above grilles.*
- *In case of longer breaks in operation and after use, switch off the device at the main switch / device switch and pull the charger's mains plug.*
- *Do not operate the appliance at temperatures below 0 °C.*
- *Protect the unit from rain. Do not store outside.*

Description of the Appliance

- | | | | | | |
|----|--------------------------------|----|-----------------------------|--------|--------|
| 1 | ON/OFF switch | 13 | Handle fresh water tank | | |
| 2 | Handle | 14 | Roller storage | | |
| 3 | Battery indicator | 15 | Cleaning / park station | | |
| 4 | Carrying handle | 16 | Filter inlay | | |
| 5 | Charging socket | 17 | Charger with charging cable | | |
| 6 | Waste water tank/separator lid | 18 | * Detergent | RM 536 | 30 ml |
| 7 | Waste water tank | 19 | ** Detergent | RM 534 | 30 ml |
| 8 | Cover suction head | 20 | ** Detergent | RM 536 | 500 ml |
| 9 | Recessed grip cleaning roller | | * FC 5 Cordless | | |
| 10 | Cleaning rollers | | ** FC 5 Cordless Premium | | |
| 11 | Lock suction head | | | | |
| 12 | Fresh water tank | | | | |



Assembly

→ Please unfold the pages with the diagrams!



Illustration 1

- Insert handle into the basic unit as far as it goes until it engages audibly.
The handle must sit snugly into the appliance.

Commissioning

Installing the rollers

Illustration 2

- Screw the cleaning rollers onto the threaded rod up to the mechanical stop.
→ Pay attention to the colour-codes on the inside of the roller and roller holder on the appliance (e.g. blue should match up with blue).
→ After the installation, check to ensure that the cleaning rollers sit snugly.

Charging process

Illustration 3

- To stabilise, place the appliance into the cleaning station.

Illustration 4

- Plug the charging cable of the charger into the charging socket on the device.
→ Plug the mains plug of the charger into a power outlet.

Illustration 5

- The LED indicator lights display the battery's current charging state.
- All 3 LED indicator lights flash from bottom to top when charging a completely empty battery.
- The lowermost LED lights up continuously when the battery is 1/3 charged, the two upper LEDs continue to flash.
- When the battery is 2/3 charged, the two lower LEDs light up continuously, the uppermost LED continues to flash.
- After the battery has been fully charged, the 3 LED indicator lights will continue to light constantly for 60 minutes. After this time, the LED indicator lights go out.

Illustration 6

- Once the battery is charged, pull the mains plug out of the socket and the charging cable out of the charging socket.

Fill fresh water reservoir

Illustration 7

- Remove the fresh water tank from the appliance using the handle.

Illustration 8

- Open fuel filler cap.
→ Fill the fresh water tank with cold or lukewarm tap water.
→ KÄRCHER detergents/care agents can also be added to the fresh water tank as required.* See chapter "Detergents and care products".
→ Do not exceed the "MAX" marking when filling.
→ Close tank lock.

Illustration 9

- Insert the fresh water container into the appliance.
→ The fresh water tank must sit snugly into the appliance.

ATTENTION

**Follow the recommended dosage instructions on the detergent/care agent.*

Operation

General information on the operation

ATTENTION

Illustration A

The appliance must only be used for the intake of dirt and fluids (max. 250 ml).

Illustration B

Before beginning your work, remove any objects, such as shards, pebbles, screws or toy parts from the floor. Before use, check the floor for water consistency at suspect areas. Do not clean water-sensitive coatings, such as untreated cork floors (moisture ingress is possible which may damage the floor).

Illustration C

To avoid fresh footprints on the freshly-wiped floor, work backwards towards the door.

- Hold the appliance at the handle at angle of approx. 60 degrees.
→ Clean the floor by moving the appliance back and forth at a similar speed as if you were vacuum cleaning.
→ If the floor is especially dirty, let the appliance glide slowly across the floor.
→ For scope of delivery of the roller pads in grey and yellow: Both roller pads have the same functionality, they can be used for different areas of application (colour distinction, e.g. for kitchen and bathroom).

Turning on the Appliance

Illustration 11

- Press the ON switch briefly.
→ After about 1-2 seconds, the rollers begin to rotate and the appliance is ready for use.

Start working

ATTENTION

After switching on the appliance, the cleaning rollers will begin to rotate. Hold the handle tight to prevent the appliance from moving forwards by itself.

Make sure the fresh water tank is filled with water and the waste water tank is fitted in the appliance.

Illustration 10

- To quickly wet the rollers, use a measuring cup to fill the cleaning station with 50 ml of fresh water.

Illustration 11

- Switch on the appliance and put it into operation in the station for 5 seconds.
The appliance then has the ideal level of moisture in order to allow fast cleaning.
→ Switch off the appliance; press the on/off button to do so.

Illustration 12

- Remove the carrying handle from the cleaning station and set it on the floor.
→ Hold the appliance firmly using the handle.

Illustration 13

- To switch on the appliance press the on/off switch.

Battery service life

Illustration 14

- 3 LEDs illuminated - 3/3 battery run time (full run time).
- 2 LEDs illuminated - 2/3 battery run time.
- 1 LEDs illuminated - 1/3 battery run time.
- The rollers signal 5 minutes before the run time ends by changing rotation direction.
- The lowermost LED starts to flash approx. 2.5 minutes before the battery has to be charged.
- The device shuts off automatically 1.5 minutes before the run time ends.
- The remaining 1.5 minutes can be used for cleaning the device in the station by switching it back on again.
See "Cleaning the appliance by rinsing".
- The lowermost LED flashes for another 10 seconds when the battery is empty and the device has switched off.

Refill detergent

ATTENTION

Before filling the fresh water tank, please empty the waste water tank. In this way you can avoid overflowing of the waste water tank.

See Chapter "Emptying the waste water tank".

Illustration 3

- Place the appliance in the cleaning station.

Illustration 7

- Remove the fresh water tank from the appliance using the handle.

Illustration 8

- Open fuel filler cap.
- Fill the fresh water tank with cold or lukewarm tap water.
- Add cleaning or disinfecting agent as required.
- Do not exceed the "MAX" marking when filling.
- Close tank lock.

Illustration 9

- Insert the fresh water container into the appliance. The fresh water tank must sit snugly into the appliance.

Emptying the waste Water tank

ATTENTION

The water level must be checked at regular intervals to prevent the waste water tank from overflowing. Do not exceed the "MAX" marking.

Illustration 3

- Place the appliance in the cleaning station.

Illustration 15

- Hold the waste water tank at the bottom handle. At the same time, press the upper handle downwards with your thumbs.
 - Remove waste water tank.
- Illustration 16
- Remove the cover from the waste water tank.
 - Empty the waste water tank.
 - Depending on the amount of dirt, clean the lid/separator and waste water tank with tap water.
 - Place the lid on the waste water tank. The lid must sit snugly onto the waste water tank.

Illustration 17

- Insert the waste water tank into the appliance. The waste water tank must sit snugly in the appliance.

Interrupting operation

Illustration 13

- Switch off the appliance; press the on/off button to do so.

Illustration 3

- Place the appliance in the cleaning station.

ATTENTION

To ensure the stability of the appliance during downtime, always put the appliance into the cleaning/park station. A lack of stability can cause the appliance to topple over, which can cause fluid to leak that damages the floor covering.

Turning Off the Appliance

Illustration 13

- Switch off the appliance; press the on/off button to do so.

Illustration 3

- Place the appliance in the cleaning station.

Illustration 15

- Remove the waste water tank.

ATTENTION

After completing the work, clean the appliance by applying a rinse cycle.

See "Cleaning the appliance by rinsing".

Illustration 23

- Completely empty the appliance.

Illustration 15

until

Illustration 16

- Empty the waste water tank.
See Chapter "Emptying the waste water tank".
- If there is still water in the fresh water tank or cleaning station, empty it.

Storing the Appliance

ATTENTION

To prevent odours developing, the fresh water and waste water tank must be completely emptied prior to storing the appliance.

Illustration 12

- Move the appliance to the place of storage using the carrying handle.

Illustration 3

- To stabilise, place the appliance into the cleaning station.
- Store the appliance in a dry room.

Care and maintenance

Cleaning appliance with rinsing process

ATTENTION

When the work is finished, always rinse the appliance through with the cleaning station and fresh water. This is the best way of cleaning the appliance. It prevents the build-up of dirt and bacteria or unpleasant odours.

Illustration 13

- Switch off the appliance; press the on/off button to do so.

Illustration 3

- Place the appliance in the cleaning station.
- For the rinsing process, fill the fresh water tank with cold or lukewarm tap water to completely remove detergent residue from the suction ducts and slits on the suction head.
- Insert the fresh water container into the appliance.

Illustration 13

- Remove the waste water tank and empty it. See Chapter "Emptying the waste water tank".
 - Fill the measuring cup with 200 ml water.
 - Fill the cleaning station with water.
 - If necessary, add appropriate KÄRCHER cleaning agents for the rinsing procedure.
 - To switch on the appliance press the on/off switch.
 - Allow the appliance to run for 30-60 seconds until the water is completely drawn out of the cleaning station.
- The rinsing procedure is now complete.

Note

The longer the appliance is switched on, the less residual moisture is left over in the cleaning rollers.

- Switch off the appliance; press the on/off button to do so.
- If there is still water in the fresh water tank, remove the fresh water tank and empty it.

Illustration 16

- Empty the waste water tank. See Chapter "Emptying the waste water tank".
- If there is still water in the fresh cleaning station, empty it.

Cleaning the rollers

ATTENTION

The fresh and waste water tanks must be emptied before the appliance is set down on the ground for roller removal. This prevents any fluids from leaking out of the tank when it is laid on the ground.

Note

In the case of heavy contamination, clean the cleaning rollers separately.

Illustration 13

- Switch off the appliance; press the on/off button to do so.
- If there is still water in the fresh water tank, remove the fresh water tank and empty it.
- Empty the fresh water reservoir.

Illustration 16

- Empty the waste water tank.

Illustration 19

- Twist out the cleaning rollers from the recessed grip.
- Illustration 20
- Clean the cleaning rollers under running water.
- or
- Wash the cleaning rollers in the washing machine up to 60°C.

ATTENTION

Do not use any soft detergents when cleaning in the washing machine. This avoids causing damage to the microfibres. It also preserves the high performance levels of the cleaning rollers.

The cleaning rollers are not suitable for the tumble dryer.

Illustration 21

- Once cleaned, place the rollers onto the cleaning station's roller storage and leave to air dry.
- Drying time can be minimized by wringing out the rollers beforehand.

Cleaning the suction head

ATTENTION

In the case of heavy contamination or if parts such as stones or splinters get into the suction head, it will need to be cleaned. While the appliance is working, these parts will cause a rattling noise or will block up the suction ducts, diminishing suction performance.

Illustration 13

- Switch off the appliance; press the on/off button to do so.

Illustration 19

- Remove the cleaning rollers. See "Cleaning the rollers".

Illustration 22

- Press the suction head lock.
- Take off the suction head lid.
- Clean the suction head lid under running water.
- If necessary, remove particle deposits from the suction ducts and slits in the suction head lid.
- Clean the suction head with a damp cloth.
- Fix the suction head lid onto the suction head.

Note

When attached to the suction head the suction head lid must lock in place audibly.

Illustration 2

- Screw the cleaning rollers onto the threaded rod up to the mechanical stop. See "Cleaning the rollers".

Clean the waste water tank

ATTENTION

Regularly clean the waste water tank to prevent blockage to the separator with dust and dirt or to prevent dirt from building up in the tank.

Illustration 13

- Switch off the appliance; press the on/off button to do so.

Illustration 3

- Place the appliance in the cleaning station.

Illustration 15

until

Illustration 16

- Remove the waste water tank from the appliance. See Chapter "Emptying the waste water tank".
- Clean the lid/separator and waste water tank with tap water.
- The waste water tank can also be cleaned in the dishwasher.

Illustration 17

- After cleaning, put the waste water tank with lid back into the appliance.

Detergents and care products

ATTENTION

The use of unsuitable cleaning and disinfecting agents can damage the appliance and will void the warranty.

Note

Add cleaning or disinfecting agent as required.

- When dosing the detergent and care product, follow the manufacturer's dosage instructions.

Illustration 8

- To prevent foaming, first fill the fresh water tank with water then cleaning or disinfecting agent.
- To avoid exceeding the "MAX" fill level on the fresh water tank, leave room for the cleaning or disinfecting agent when filling with water.

Troubleshooting

Often, failures have simple causes and you can do the troubleshooting yourself using the following overview. If you are in doubt or if the failure is not listed here please contact the authorized customer service.

Battery is not charging

- Charging plug/mains plug not correctly connected.
- ➔ Connect charging plug/mains plug correctly.

The device cannot be switched on

- Battery is empty.
- ➔ Charge the device.
- Check whether the charging cable is still plugged into the device.
- ➔ Take out charging cable, operation is not possible while charging cable is plugged in.

LED fault display

Lowermost LED flashes when the device is switched on and does not start.

- Battery is empty
- ➔ Charge the device.

All LEDs flash quickly simultaneously.

- Use of wrong or defective mains plug.
- ➔ Use original mains plug/replace defective mains plug.

or

- Device too hot during use (e.g. when operating in high ambient temperatures).
- ➔ Take a break and let the device cool down.
- If the device also switches off:
- ➔ Take a break and let the device cool down.
- ➔ The device can only be switched on again once it has cooled down enough.

Lack of roller moistening with fresh water

Filter inlay is not inserted.

(see graphic for description of the device)

- ➔ Remove fresh water tank and insert filter inlay with rubber pin facing upwards.

Filter inlay is inserted the wrong way round.

- ➔ Remove filter inlay and insert with pin facing upwards.

The suction hose is blocked by deposits of dirt.

- ➔ Carefully remove the suction hoses from the suction head and basic unit.
- ➔ Place the suction hoses in cold water for 10–20 minutes.
- ➔ Clean suction hoses with a dull object and/or under running water.

Appliance is not sucking up dirt

No water in the water reservoir.

- ➔ Refill water

Fresh water tank does not fit properly in the device.

- ➔ Insert the fresh water tank so that it sits snugly in the appliance.

Cleaning rollers missing or not fitted correctly.

Illustration **2**

- ➔ Fit the cleaning rollers or turn them onto the roller holder up to the mechanical stop.

Cleaning rollers are contaminated or worn.

- ➔ Clean the cleaning rollers.

or

- ➔ Replace the cleaning rollers.

Rollers do not turn

Rollers are blocked.

Illustration **19**

- ➔ Remove rollers and check if an object has become stuck in the rollers.
- ➔ Check that the rollers are screwed in as far as they will go onto the roller holder.

Loud rattling when switched on

Rollers are too dry.

- ➔ Moisten the rollers/the device with 50 ml of water in the park station.

Rattling noise in the suction head

There are parts (e.g. stones or splinters).

Illustration **22**

- ➔ Remove suction head lid and clean the suction head.
- See Chapter "Cleaning the suction head".

Suction power decreases

The suction ducts and slits on the suction head are blocked.

Illustration **22**

- ➔ Remove suction head lid and clean the suction head.
- See Chapter "Cleaning the suction head".

Appliance is leaking waste water.

Waste water tank is overfilled.

Illustration **15**

until

Illustration **16**

- ➔ Empty the waste water tank right away.
- See Chapter "Cleaning the waste water tank".

Waste water tank does not fit properly in the appliance.

- ➔ Check whether the lid is fit securely on the waste water tank.
- See Chapter "Cleaning the waste water tank".

Separator is blocked.

- ➔ Remove lid from the waste water tank and clean the separator.
- See Chapter "Cleaning the waste water tank".

The filter net of the waste water tank separator was damaged during cleaning.

- ➔ Renew separator.

Appliance leaves streaks behind on the floor

Cleaning or disinfecting agents are not suitable for the appliance or were dosed incorrectly.

→ Only use detergents and care products approved by the manufacturer.

See chapter "Detergents and care products".

→ Follow the manufacturer's dosage instructions.

The initial moistening of the rollers was not used or was not used long enough, meaning that the rollers are not completely moistened (rollers therefore only clean partially).

Illustration **10**

→ Completely moisten rollers.

Removing the handle from the basic unit

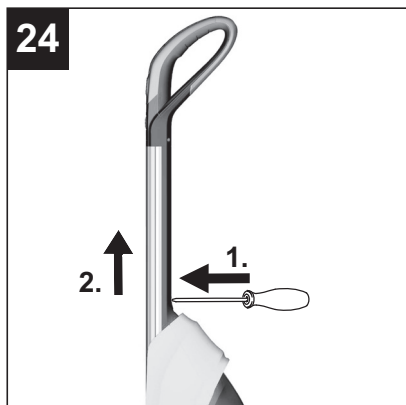
ATTENTION

Do not remove the handle from the basic unit once it has been assembled.

The handle may only be removed from the basic unit if the unit is sent out for service purposes.

Illustration **24**

→ Insert screwdriver at a 90 degree angle in the small opening at the rear side of the handle and remove handle.



ATTENTION

Please ensure that the connection cable between the basic unit and the handle are not damaged.

Technical specifications

Electrical connection

Nominal battery voltage	25,2 V
-------------------------	--------

Protection class	IPX4
------------------	------

Device	III
--------	-----

Protective class	
------------------	--

Charger protection class	II
--------------------------	----

Rated power of appliance	165 W
--------------------------	-------

Battery type	Li-Ion
--------------	--------

Operating time with full charge	approx. min 20
---------------------------------	----------------

Charging time for empty battery	4 h
---------------------------------	-----

Charger initial voltage:	30 V
--------------------------	------

Output current, charger	0,6 A
-------------------------	-------

Performance data

Roller revolutions per minute	500 rpm
-------------------------------	---------

Filling quantity

Fresh water tank	400 ml
------------------	--------

Cleaning station	200 ml
------------------	--------

Dimensions

Weight (without accessories and cleaning fluids)	4,4 kg
--	--------

Length	320 mm
--------	--------

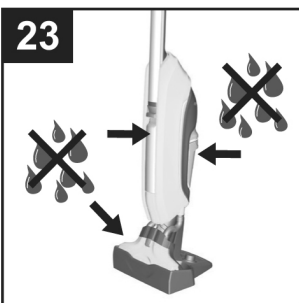
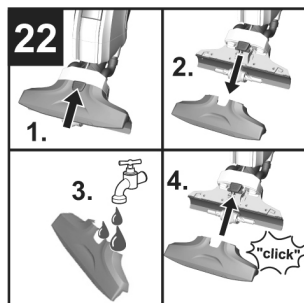
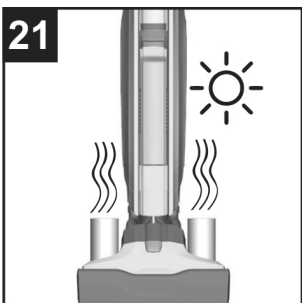
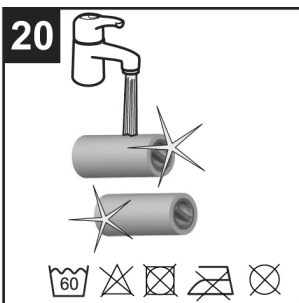
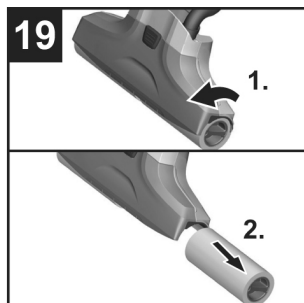
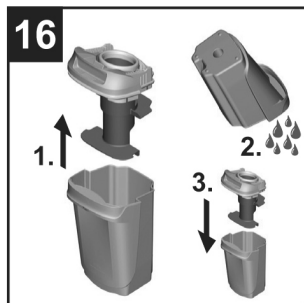
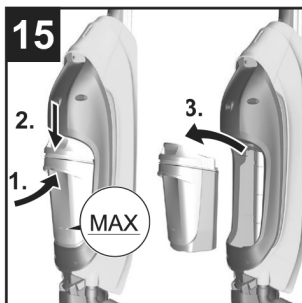
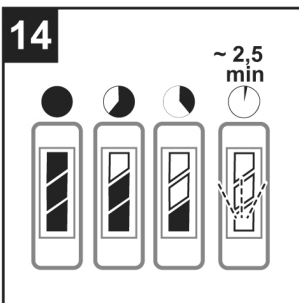
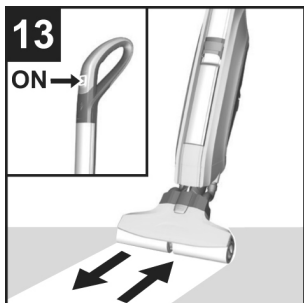
Width	270 mm
-------	--------

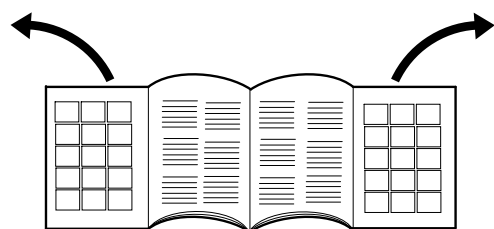
Height	1220 mm
--------	---------

Cable length	
--------------	--

Charger	1500 mm
---------	---------

Subject to technical modifications!







www.kaercher.com/dealersearch

Alfred Kärcher SE & Co. KG

Alfred-Kärcher-Str. 28-40
71364 Winnenden (Germany)

Tel.: +49 7195 14-0

Fax: +49 7195 14-2212

