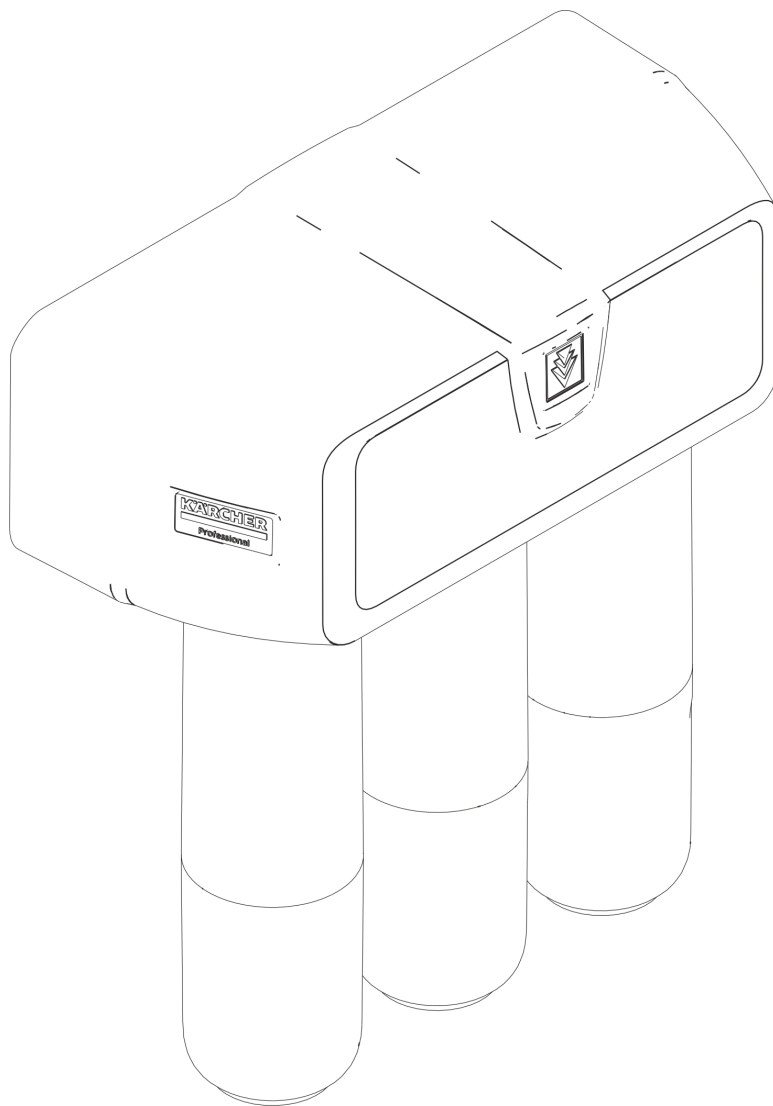


KÄRCHER

makes a difference

WPC 80 RO

中文 2
English 7



Register and win!
www.kärcher.com/register-and-win



97670340 06/17



在您第一次使用您的设备前，请先阅读并遵守本操作说明书原件，为日后使用或其他所有者使用方便请妥善保管本说明书。

目录

目录	ZH	1
一般性注意事项	ZH	1
环境保护	ZH	1
安全	ZH	1
危险等级	ZH	1
安全提示	ZH	1
按规定使用	ZH	1
污染类型	ZH	1
功能	ZH	1
连接设备	ZH	1
选择安装位置	ZH	1
自来水连接管	ZH	1
快速接头 - 基础	ZH	1
连接设备	ZH	1
连接到原水管上	ZH	2
安装新鲜水水龙头	ZH	2
设备调试	ZH	2
开始运行	ZH	2
洗涤滤芯	ZH	2
操作说明	ZH	2
封存	ZH	2
封存后启用	ZH	2
保养与维护	ZH	2
保养提示	ZH	2
保养合同	ZH	2
更换滤芯	ZH	2
质量保证	ZH	2
备件	ZH	2
消耗材料	ZH	3
建议的滤芯更换间隔时间	ZH	3
故障排除	ZH	3
产品规格 / 参数	ZH	3

一般性注意事项

- 只能使用来自公用给水的饮用水，以確保自流水的水质。
- 如果安装饮水机时必须对饮用水管网做一些改动，则必须由具备符合当地现行规定的操作资格的专业人员来实施。如有需要，必须由客户委托实施此类作业。
- 我们建议在供水管上安装闭锁设备和双重防漏保护阀（选择性配置），以防止输水管道破裂造成水资源损失。
- 不得使用含酒精、磨损性或腐蚀性的清洗剂清洗塑料表面。建议使用表面清洁剂 CA 30 R (6.295-686.0)。
- 首次投入运行、更换过滤器或较长时间停机后，可能导致流出的水暂时呈现乳状外观。这是由于细小的气泡所致，但是对水质并无影响。

环境保护



包装材料可以回收利用。请不要把包装材料与普通垃圾放在一起处理，而应妥善安排回收。



旧的设备中含有宝贵的可再利用的材料，应加以回收利用。电池、油以及类似物质不可以进入自然环境。请通过适当的收集系统处理您的旧设备。

内部材料提示 (REACH)

最新的内部材料信息请您在如下链接中查找：

www.kaercher.com/REACH

安全

危险等级

△ 危险

提示会导致人员重伤或死亡的直接威胁性危险。

△ 警告

提示可能导致人员重伤或死亡的危险状况。

△ 小心

提示可能导致轻度伤害的危险状况。

注意

提示可能产生财产损失的危险状况。

安全提示

△ 警告

由于病菌的进入而造成的健康危害。

→ 更换滤芯时须特别注意卫生和清洁。

→ 当更换过滤器时须戴上消毒的一次性手套。

△ 警告

由于设备维护不当会造成健康危害。

→ 仅允许接受过培训的专业人员维修该设备。

△ 警告

在更换过滤器时不要混淆过滤器。

→ 始终在正确的过滤器位置上安装过滤器。

按规定使用

该装置可以将来自饮用水管路的的可能已经污染的水转换为优质、无残留物的饮用水。

污染类型

原水允许被以下物质污染：

- 生物污物（细菌、病毒、有毒物质）
- 无机盐（重金属、硝酸盐、石棉等）
- 有机化合物（苯、溶剂等）
- 氯
- 灭草剂
- 少量盐（不是来自海水）
- 矿物质
- 固体物质
- 硬度标度（水硬度）

我们建议：在初始开动之前，按照“Directive EU（欧盟指令）98/83 附录 3：指示参量”，对水加以分析。

运行设备时，原水分析不是必须执行的。

只有在装置得到定期维修的情况下，才能确保饮用水的质量。

本设备规定用于连接水管道。

必须遵守各国的饮用水法规。

本设备不是作为废水处理设备设计的。

必须确定设备不能由缺乏经验和 / 或缺专业知识的人员（包括儿童）使用，除非有人对他们的安全进行监督或他们收到如何操作设备的提示。

该饮水机必须摆放在无霜的空间内。

不得在室外使用或安放该设备。

在考虑到这些使用规则的情况下，可以从本设备中滤出的水归为饮用水。

功能

水从入水口流过

- 复合过滤器包含一个聚丙烯滤芯和一个活性炭滤芯
- 膜过滤器（逆向渗透）
- 活性炭过滤器

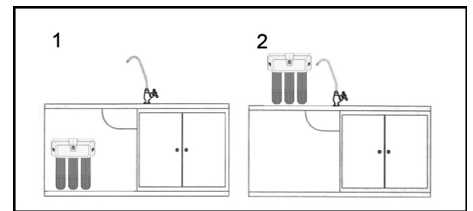
整个过滤系统必须定期更换。

连接设备

在第一次安装和可能涉及到更换配件的维修作业中，必须确保只能使用附属的部件。这些部件指的是 KÄRCHER 准许用于安装的部件。不允许使用其他部件。

为了摆放饮水机，用户方还必须提供一个用于摆放的平面。

选择安装位置



1 台下安装

2 台上安装

提示

选择安装位置时，应确保接头和截流阀停止阀易于维修。

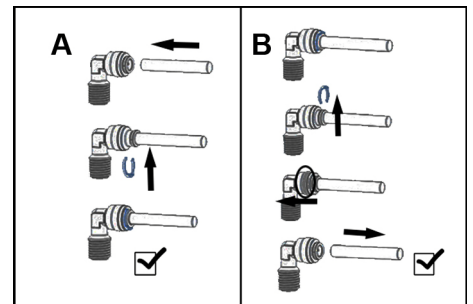
预留足够的过滤器更换空间。

软管的铺设不得弯折。

自来水连接管

在连接到饮用水网上时，遵守当地的水网断开规定。

快速接头 - 基础



A 固定软管

B 松开软管

→ 在插入前截短软管。

提示

截短软管，切口不得歪斜。斜切的软管将导致不密封！

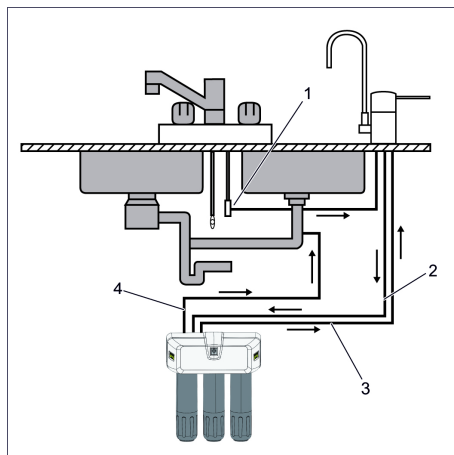
连接设备

提示

在连接之前，选择安装位置并按照所需长度相应地切割好软管。确保留下足够长的软管，以防必须移动装置的情况（例如：更换滤芯时）。

为了更好地进行区分，对软管进行了颜色编码，具有不同的直径：

蓝色	自来水干管供水端 Ø 9.5 mm
白色	供水龙头至装置的软管 Ø 9.5 mm
白色	装置至过滤水出口的软管 Ø 6.35 mm
白色	废水管（浓缩物）

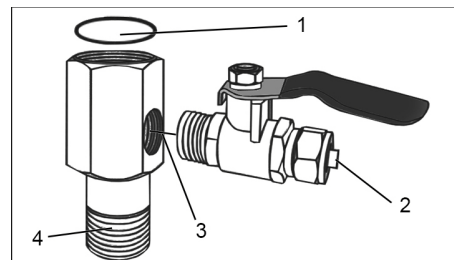


- 1 三通管至过滤水龙头
- 2 饮用水进口
- 3 新鲜水出水口（过滤水）
- 4 废水管（浓缩物）

连接到原水管上

注意

漏水危险。在所有安装作业时注意安全连接和进行密封性试验。如有疑问，请联系专业人员！



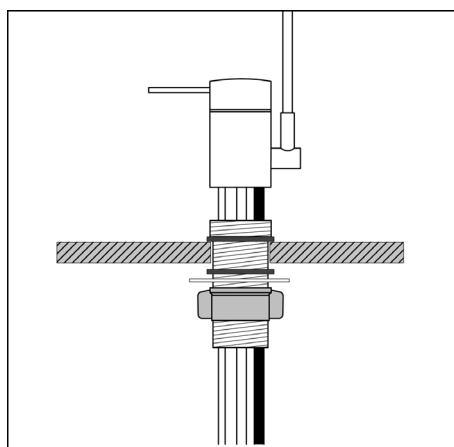
- 1 0 形圈，出水口上的密封圈
- 2 出口至过滤水龙头
- 3 截止阀的连接
- 4 原水管的连接

提示

进水口和出水口螺纹：1/2“

- 将截止阀拧到连接件上，使用密封带。
- 将 T 形连接件安装到原水管中。
- 在出水口上使用 0 形圈，在入水口上使用密封带。
- 将来自过滤水龙头的软管（蓝色）插入三通管，并用螺钉连接加以固定。

安装新鲜水水龙头



提示

新鲜水水龙头应当安装在与废水通道连接的水盆之上。

- 如图所示安装新鲜水水龙头。
- 孔径：30 mm
- 安装时注意各个部件的正确布置。
- 将软管连接在设备的新鲜水出口上。
- 将软管连接在新鲜水水龙头上。

设备调试

开始运行

在首次取水饮用之前，必须给系统装满水冲洗。

警告

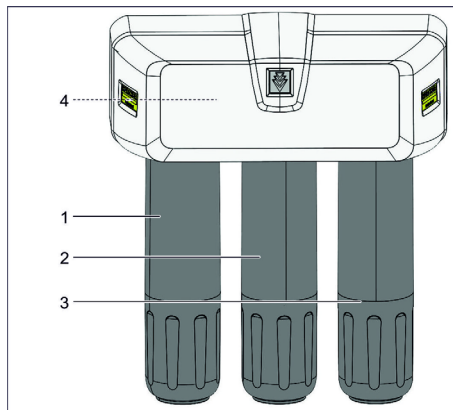
由于病菌的进入而造成的健康危害。更安装和拆卸滤芯时须特别注意卫生和清洁。

请勿触碰支架与过滤器接头。

在安装时戴上一一次性手套。

在拆卸和安装时，不要损坏密封圈。

该装置包括四个滤芯：



- 1 一体式聚丙烯棒复合滤芯
- 2 一体式反渗透膜滤芯
- 3 一体式反渗透膜滤芯
- 4 后置活性炭滤芯

洗涤滤芯

→ 连接设备与水网。

→ 打开止水栓。

系统现在装水。

→ 冲洗系统至少十五分钟，清除空气以及过滤器中的所有生产废渣。

→ 关闭新鲜水水龙头。

设备现在准备就绪。

操作说明

→ 取用已过滤的新鲜水时，打开新鲜水水龙头。

封存

如果超过 4 天不使用该饮水机：

→ 关闭供水装置。

封存后启用

警告

由于水中细菌浓度升高而造成的健康危害。

→ 冲洗装置至少 300 秒。

保养与维护

保养提示

警告

由于违反操作规程维修设备而造成的健康危害。只允许接收过培训的专业人员维修该饮水机。

请仅使用生产商的原厂备件或者推荐的零件，如

- 备件和易损件，
- 配件，
- 工作材料，
- 清洁剂。

在扫雪机上实施所有工作前：

→ 关闭进水。

→ 打开新鲜水水龙头并使设备无压。

保养合同

为确保设备可靠运行，推荐签署一份维护协议。请与您的 KÄRCHER 服务商取得联系，

更换滤芯

装入设备的过滤器必须定期更换。周期取决于使用情况。所建议过滤器运行时间（更换周期）的相关概览在本说明书的结尾。

警告

由于病菌的进入而造成的健康危害。更换过滤器时须特别注意卫生和清洁。请勿触碰支架与过滤器接头。

在更换过滤器时须戴上一一次性手套。

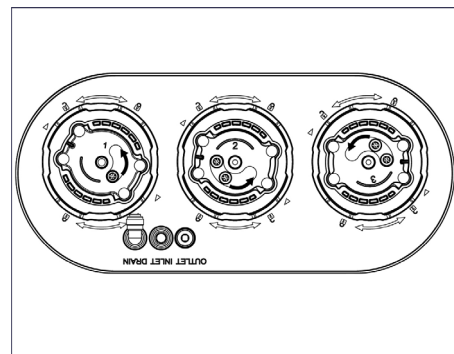
在拆卸和安装时，不要损坏密封圈。

注意

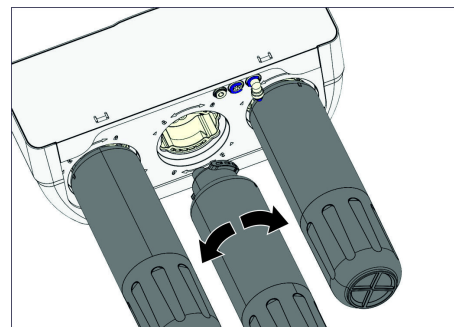
漏水危险。滤杯已装满了水！在拆卸之前，将合适的容器或接水碗放在下面。

提示

已用过的滤芯可以随同家庭垃圾一起扔掉。在处置之前进行排水。



→ 在安装滤芯之前，沿黑色箭头方向转动水进口，直至极限点。



→ 拧下滤芯（卡口式连接）。

→ 更换过滤器。

- 清除保护膜。
- 清除连接处的塞子。
- 插入新的滤芯。

提示

过滤器必须安装在同一位置并且不能相互混乱！注意插图！

如果不确定如何更换过滤器，请随时与经销商或 KÄRCHER 办事处联系。

质量保证

我们的质量保证条款适用于全球各分公司。在质量保证期内，如果您的产品发生了任何故障，我们都将为您提供免费维修，但是这种故障应当是由于机身材料或制造上的缺陷造成的。请您向经销商或者与您距离最近的经过授权的客户服务中心联系，提出保修请求，并提供相应的产品购买证明文件。

备件

- 只允许使用 KÄRCHER 许可的配件和备件。原始配件和原始备件可以确保设备安全无故障地运行。
- 您可以登录 www.kaercher.com 的 Service 板块里获取更多关于备件的信息。

消耗材料

滤芯类型	描述	订单编号
一体式聚丙烯炭棒复合滤芯	第一过滤阶段用于预分离颗粒和有害物质	9.757-000.0
一体式反渗透膜滤芯	第二过滤阶段用于精细分离有害物质	9.757-001.0
一体式反渗透膜滤芯	第二过滤阶段用于精细分离有害物质	9.757-002.0
后置活性炭滤芯	第三过滤阶段用于改善过滤水的品质	9.757-008.0

建议的滤芯更换间隔时间

滤芯类型	月数	提示
一体式聚丙烯炭棒复合滤芯	3 - 6	实际更换周期取决于多个因素，如城市水质、运行时间和运行频率等，或者根据需要（参见“故障排除”一节）。
后置活性炭滤芯	6 - 12	
一体式反渗透膜滤芯	24	

故障排除

△ 警告

由于违反操作规程维修设备而造成的健康危害。只允许接收过培训的专业人员维修该饮水机。

在扫雪机上实施所有工作前：

→ 关闭进水。

→ 打开水龙头并使设备无压。

故障	可能的原因	排除故障
不放水	无水源	确保水源
放水量小	一体式聚丙烯炭棒复合滤芯堵塞。	更换滤芯
从过滤器外壳中出水	过滤器外壳的密封圈滑落或损坏	更换滤芯
饮用水的口味不好	后置活性炭滤芯需要更换。	更换滤芯

产品规格 / 参数

WPC 80 RO		
上水压力	MPa (bar)	0.1.....0.4
上水温度	° C	5.....38
过滤功率	l/h	80 *
环境温度	° C	4.....40
宽度	mm	415
深度	mm	197
高度	mm	467
重量 (净)	千克	6.2
重量, 准备就绪 (装满水并带附件)	千克	10.2

* 如果水输入压低于 60 PSI，则需要使用增压泵，以使水输入压保持在 0.4 MPa 以上。

材料 / 许可	所有引导水流的零部件 / 组件都依据普遍公认的技术规则适合并准许应用于与饮用水直接接触的范围。
---------	---

保修卡

尊敬的用户：

非常感谢您选用 Kärcher 公司产品，我们愿竭力为您提供优质的服务。《保修卡》是保修产品的重要凭证，请您仔细填写此卡并妥善保存。如产品需要维修时，请提供此保修卡和发票原件。

购买日期：_____ 产品型号：_____

用户电话：_____ 产品序列号：_____

用户地址：_____ 经销商盖章：_____

服务热线：400-880-1060

服务邮箱：service@karcher.cn

官网地址：www.karcher.cn



扫一扫
关注官方微信



扫一扫获取
更多服务商信息

KÄRCHER

makes a difference

《保修卡》涂改无效，遗失不补。

保修条款

本条款所属内容是依据《中华人民共和国消费者权益保护法》、《中华人民共和国产品质量法》及其它相关规定编写，仅适用于Kärcher公司在中国大陆销售的家用系列产品。

为了维护您的合法权益，请在购机时索要发票（即财税部门统一监制的发票）及相关凭证。

1. 本产品在正确使用、操作的情况下，如产品确实存在由于材料、设计和制造引起的质量问题，本公司提供保修，自购机之日起，保修期为12个月。
2. 用户申请保修服务时，需携带有效发票原件及保修卡原件，将产品及原装附件一起送至Kärcher授权服务点进行保修。
3. 如果下述任何一种情况发生，消费者将不能享受保修服务（即本保修条款不予适用），但可享受Kärcher公司授权之服务点提供的有偿服务：
 - 1) 超过保修有效期的；
 - 2) 无有效发票原件或保修凭证的，或保修凭证（或发票）与产品实物不符，或保修凭证（或发票）经涂改的；
 - 3) 非按产品使用说明书要求使用、维护、保养产品而造成损坏的；
 - 4) 产品的自然磨损及易损易耗件（包括但不限于外壳、高压管、密封件、喷枪、喷嘴、单向阀、柱塞、吸尘管、刷子、扒头、过滤器、尘袋、传动皮带、齿轮、电池等）；
 - 5) 产品售出后由于运输或搬运造成损坏的；
 - 6) 未经Kärcher公司同意而对产品自行拆卸或自行修理而造成损坏的；
 - 7) 因电压、水源、使用环境不当而导致故障的；
 - 8) 因使用不正确的清洁介质而造成故障的；
 - 9) 由于不可抗力等自然因素造成故障的；
 - 10) 一切未经Kärcher公司许可对产品进行改造的；
 - 11) 产品无原厂标识，或原厂标贴上的订货号、序列号与Kärcher公司所提供的产品订货号、序列号不一致的；
 - 12) 其它因用户原因造成产品故障的。
4. Kärcher公司的家用产品只适用于家庭用途，凡用于非家庭场所，如商用或工业用途等的，将不能享受免费保修服务。
5. 往返Kärcher授权服务点的一切费用由用户自行承担（销售时，经销商有另外承诺的除外），家用系列产品不提供免费上门保修服务。
6. 保修期内，所有因维修被替换下来的零件、部件和附件等归Kärcher公司所有。
7. 保修期内，如所维修的部件已停产或淘汰，Kärcher公司有权使用同档次或更高档次的产品进行替换。
8. Kärcher公司对产品的保修义务，无论本保修条款或其它书面说明可能隐含或默认的保修义务，都应当被理解为已经包含在本保修条款所列的保修范围和保修期限内。
9. 保修期内，用户按本保修条款享受保修服务，此为用户因产品缺陷所受损失的唯一补救措施；换言之，Kärcher公司对用户的其它直接或间接损失（包括但不限于数据的丢失、期待的利益等）不承担任何责任。
10. Kärcher公司的经销商或其代理人以及Kärcher公司授权的服务点均无权代表Kärcher公司承担超出本保修条款范畴的义务，亦无权放弃Kärcher公司在本保修条款下的任何权力。
11. 中国有关法律的强制性规定适用于本保修条款。
12. Kärcher公司保留调整有关保修信息、产品功能及规范等的权利，恕不另行通知。

凯驰（上海）清洁系统有限公司
2016年08月16日



Please read and comply with these original instructions prior to the initial operation of your appliance and store them for later use or subsequent owners.

Contents

Contents	EN	1
General notes	EN	1
Environmental protection	EN	1
Safety	EN	1
Danger or hazard levels	EN	1
Safety instructions	EN	1
Proper use	EN	1
Types of contamination	EN	1
Function	EN	1
Connecting the appliance	EN	1
Selecting the installation location	EN	1
Water connection	EN	1
Quick connectors – basics	EN	1
Connecting the appliance	EN	1
Connection to untreated water line	EN	2
Installing the filtered water tap	EN	2
Start up	EN	2
Initial startup	EN	2
Rinsing out the filter	EN	2
Operation	EN	2
Shutdown	EN	2
Startup after shutdown	EN	2
Care and maintenance	EN	2
Maintenance instructions	EN	2
Maintenance contract	EN	2
Replacing filter inserts	EN	2
Warranty	EN	2
Spare parts	EN	2
Consumables	EN	3
Recommended filter replacement intervals	EN	3
Troubleshooting	EN	3
Technical specifications	EN	3

General notes

- Only drinking water from a public water supply can be used to guarantee the water quality of the emerging water.
- If the drinking water supply must be tapped to install the appliance, this must be performed by trained expert personnel that is in possession of a permit that meets the local laws and regulations. This work must be ordered by the customer if required.
- To protect from water damage caused by a burst water supply hose, we recommend the installation of a Shut-off-valve and an aqua stop (sold separately) in the water supply line.
- Plastic surfaces must not be cleaned with alcohol-containing, aggressive or abrasive detergents. The surface cleaner CA 30 R (6.295-686.0) is recommended.
- After initial start-up, filter changes and long periods of disuse, dispensed water may temporarily be milky in appearance. This is due to small air bubbles in the water and does not affect water quality.

Environmental protection



The packaging material can be recycled. Please do not throw the packaging material into household waste; please send it for recycling.



Old appliances contain valuable materials that can be recycled; these should be sent for recycling. Batteries, oil, and similar substances must not enter the environment. Please dispose of your old appliances using appropriate collection systems.

Notes about the ingredients (REACH)

You will find current information about the ingredients at:

www.kaercher.com/REACH

Safety

Danger or hazard levels

⚠ DANGER

Pointer to immediate danger, which leads to severe injuries or death.

⚠ WARNING

Pointer to a possibly dangerous situation, which can lead to severe injuries or death.

⚠ CAUTION

Pointer to a possibly dangerous situation, which can lead to minor injuries.

ATTENTION

Pointer to a possibly dangerous situation, which can lead to property damage.

Safety instructions

⚠ WARNING

Health risk due to the contamination with germs.

➔ *When replacing the filter cartridges, ensure hygiene and cleanliness.*

➔ *Wear sterile disposable gloves when replacing the filter.*

⚠ WARNING

Health hazards on account of improperly repaired device.

➔ *The appliance may only be repaired by trained and skilled personnel.*

⚠ WARNING

Be sure to use the correct filters during a change.

➔ *Always insert the filters in the correct position.*

Proper use

The unit is designed to convert possibly contaminated water from the drinking water line into high quality, residue-free drinking water.

Types of contamination

Untreated water may be contaminated by:

- Biological contagions (bacteria, viruses, toxins)
- Inorganic salts (heavy metals, nitrates, asbestos etc.)
- Organic compounds (benzenes, solvents etc.)
- Chlorine
- Herbicides
- Small quantity of salt (not sea water)
- Mineral compounds
- Solids
- Hardness degree (water hardness)
- Before initial start-up, we recommend analysing the water in accordance with Directive EU 98/83 Annex 3, "Indicator Parameters".
- An analysis of untreated water is not necessary to operate the unit.
- Drinking water quality is only guaranteed if the unit is serviced regularly.
- The unit is designed to be connected to the water line.
- Any national drinking water regulations must be observed.

- The unit is not designed for use as a sewage treatment system.
- This device is not intended for use by persons (including children) with reduced physical, sensory or mental abilities or lacking experience and/or knowledge, unless they are supervised by a person responsible for their safety or are instructed by these persons on the use of the device. Children should be supervised, to ensure that they do not play with the device.
- The appliance must be installed in frost-free rooms.
- Do not use or park the device outdoors.

When used as intended, water produced from this unit can be classified as drinking water.

Function

Water flows from the water inlet through the following filters:

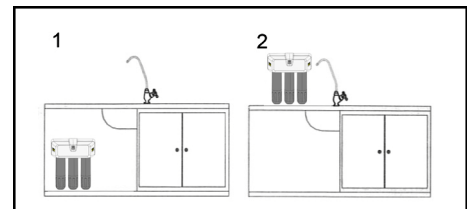
- Combination filter comprising of a Polypropylene filter and an active carbon filter
- Membrane filters (reverse osmosis)
- Active carbon filter

The entire filtration system must be replaced at regular intervals.

Connecting the appliance

- During initial installation and any repairs that involve the replacement of accessory parts, make sure only the enclosed parts are used. These parts are components that have been approved by KÄRCHER for installation. Never use other components.
- There must be an even surface available to install the appliance.

Selecting the installation location



- Installation under table
- Installation on table

Note

When selecting an installation location, make sure connections and shut-off-valves stop valves remain easily accessible.

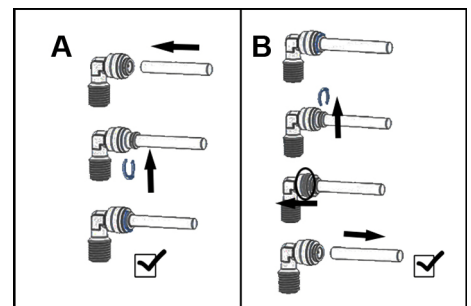
Leave enough room for filter changes.

Hose lines should be placed so that they do not bend.

Water connection

When connecting to the drinking water supply, observe local regulations on disconnecting from the mains.

Quick connectors – basics



A Attaching hose

B Removing hose

➔ Cut hose to length before insertion.

Note

Cut hose straight across. Hoses cut at an angle cause leaks.

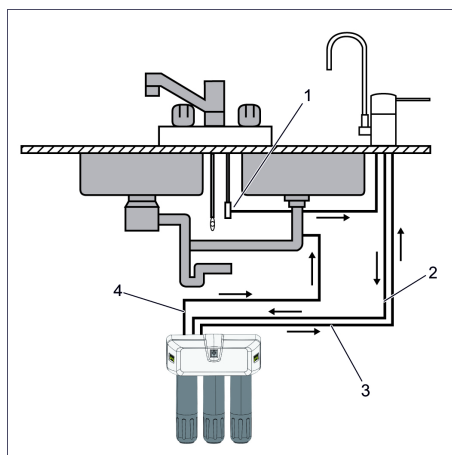
Connecting the appliance

Note

Before connecting, select an installation location and cut the hose lines to length accordingly. Make sure to leave enough hose length in case the unit has to be moved (e.g. when changing the filters).

For easy identification, the hose lines are colour coded and have different diameters:

Blue	Supply from water main Ø 9.5 mm
White	Supply tap to unit Ø 9.5 mm
White	Filtered water outlet from unit Ø 6.35 mm
White	Drain water line (concentrate)

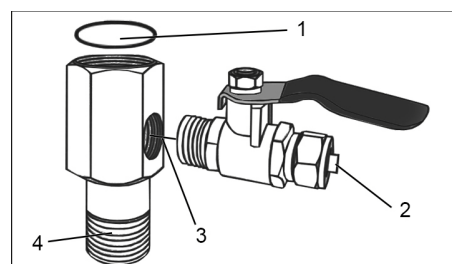


- 1 T-piece to filtered water tap
- 2 Drinking water inlet
- 3 Fresh water outlet (filtered water)
- 4 Drain water line (concentrate)

Connection to untreated water line

ATTENTION

Risk of water damage. During installation, make sure all connections are secure and check for leaks. In case of doubt, consult an expert.



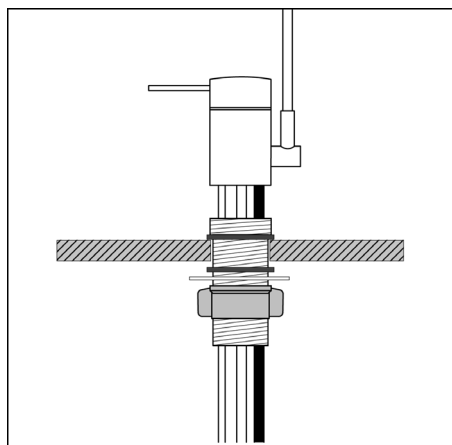
- 1 O-ring, outlet seal
- 2 Outlet to the filtered water tap
- 3 Stop cock connection
- 4 Untreated water line connection

Note

Inlet and outlet thread: 1/2"

- Screw the stop cock into the connection piece, use sealing tape.
- Insert the T-piece into the untreated water line.
- Use an O-ring on the outlet and sealing tape on the inlet.
- Insert hose (blue) from the filtered water tap into the T-piece and secure with screw connections.

Installing the filtered water tap



Note

The filtered water tap should be installed over a basin connected to the sewage drain.

- Install filtered water tap as shown.
- Hole diameter: 30 mm
- Make sure the individual parts are arranged correctly during installation.
- Connect hose line to the filtered water outlet of the unit.
- Connect hose line to the filtered water tap.

Start up

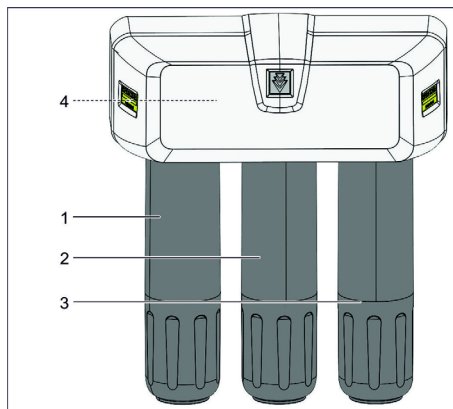
Initial startup

The system should be filled and rinsed out before dispensing water for drinking.

⚠ WARNING

Health risk due to the contamination with germs. Pay attention to hygiene and cleanliness when inserting and removing filter cartridges. Do not touch the connections of the socket and filters. Wear disposable gloves when inserting filters. Do not damage the seals during installation and removal.

The unit consists of four filters:



- 1 Multi-Protect-Filter
- 2 RO-Protect-Filter
- 3 RO-Protect-Filter
- 4 Post-Protect-Filter

Rinsing out the filter

- Connect the unit to the water main.
- Open stop-cock.

The system begins filling with water.

- Rinse the system for at least fifteen minutes to remove air and any production residue from the filters.

→ Turn off filtered water tap.

The unit is now ready for use.

Operation

- Turn on filtered water tap to dispense filtered water.

Shutdown

If the appliance will not be needed for more than 4 days:

- Shut off water supply.

Startup after shutdown

⚠ WARNING

Health risk due to increased micro-organism concentration in the water.

- Rinse the unit for at least 300 seconds.

Care and maintenance

Maintenance instructions

⚠ WARNING

Health hazards on account of improperly repaired appliance. The appliance may only be repaired by trained and skilled personnel.

Use only original parts of the manufacturer or part suggested by him, such as

- parts and wearing parts,
- accessories parts,
- operating materials,
- cleaning agents.

Before doing any work on the machine:

- Shut off water supply.
- Turn on the filtered water tap to depressurise the unit.

Maintenance contract

In order to ensure a reliable operation of the device, we recommend that you conclude a maintenance contract. Please contact your competent KÄRCHER service.

Replacing filter inserts

The filters installed in the unit must be replaced at regular intervals. This interval depends on use. An overview of the recommended filter replacement intervals can be found at the end of these instructions.

⚠ WARNING

Health risk due to the contamination with germs. When replacing the filter cartridges, ensure hygiene and cleanliness.

Do not touch the connections of the socket and filters. Wear disposable gloves when replacing a filter.

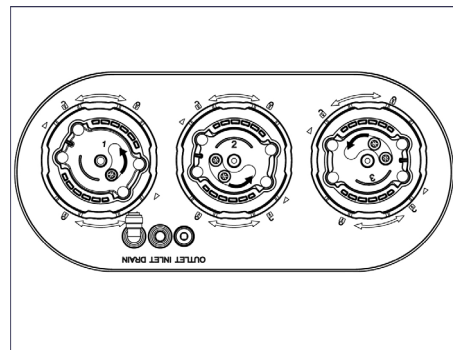
Do not damage the seals during installation and removal.

ATTENTION

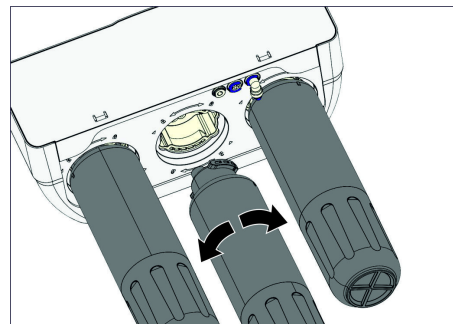
Risk of water damage. The filter chambers are full of water. Place a suitable container or dish underneath before removal.

Note

Used filters can be thrown away with household waste. Drain before disposing.



- Prior to installing the filters, rotate the water inlets in direction of the black arrows, as far as they will go.



- Unscrew filter (bayonet connection).
- Replace the filter.
 - Remove the protective films.
 - Remove plugs at the connection.
 - Insert new filter.

Note

Filters must be installed in the same position and must not be interchanged! Observe the illustration.

If you're not sure how to replace the filters, please do not hesitate to contact your dealer or your KÄRCHER branch office.

Warranty

The warranty terms published by the relevant sales company are applicable in each country. We will repair potential failures of your appliance within the warranty period free of charge, provided that such failure is caused by faulty material or defects in manufacturing. In the event of a warranty claim please contact your dealer or the nearest authorized Customer Service centre. Please submit the proof of purchase.

Spare parts

- Only use accessories and spare parts which have been approved by the KÄRCHER. The exclusive use of original accessories and original spare parts ensures that the appliance can be operated safely and troublefree.
- For additional information about spare parts, please go to the Service section at www.kaercher.com.

Consumables

Filter Type	Description	Order No.
Multi-Protect-Filter	First stage of filtration for pre-separation of particles and harmful substances	9.757-000.0
RO-Protect-Filter	Second stage of filtration for fine separation of harmful substances	9.757-001.0
RO-Protect-Filter	Second stage of filtration for fine separation of harmful substances	9.757-002.0
Post-Protect-Filter	Third stage of filtration for improvement of filtered water	9.757-008.0

Recommended filter replacement intervals

Filter Type	Interval	Unit	Note
Multi-Protect-Filter	3 - 6	months	Actual replacement cycles depend on multiple factors, like municipal water quality, operating time and operating frequency etc., or as needed (see section „Troubleshooting“).
Post-Protect-Filter	6 - 12		
RO-Protect-Filter	24		

Troubleshooting

⚠ WARNING

Health hazards on account of improperly repaired appliance. The appliance may only be repaired by trained and skilled personnel.

Before doing any work on the machine:

- ➔ Shut off water supply.
- ➔ Turn on tap to depressurise unit.

Failure	Possible cause	Correction
No water dispensed	Water supply not connected	Connect to water supply.
Little water dispensed	Multi-Protect-Filter is blocked.	Replace the filter
Water leaking from filter chamber	Filter chamber gasket not in place or defective	Replace the filter
Filtered water has noticeable taste	Post-Protect-Filter needs replacing.	Replace the filter

Technical specifications

WPC 80 RO		
Water input pressure	MPa (bar)	0,1...0,4
Water supply temperature	°C	5...38
Filter capacity	l/h	80 *
Ambient temperature	°C	4...40
Width	mm	415
Depth	mm	197
Height	mm	467
Weight (empty)	kg	6.2
Operating weight (with accessories and filled with water)	kg	10.2

*If the water input pressure is below 60 PSI, a booster pump is needed to keep the water input pressure at above 0.4 MPa.

Materials / approvals	All parts/components containing water are suited and approved for the use in direct contact with drinking water in accordance with generally accepted industry standards.
-----------------------	---



<http://www.kaercher.com/dealersearch>

