

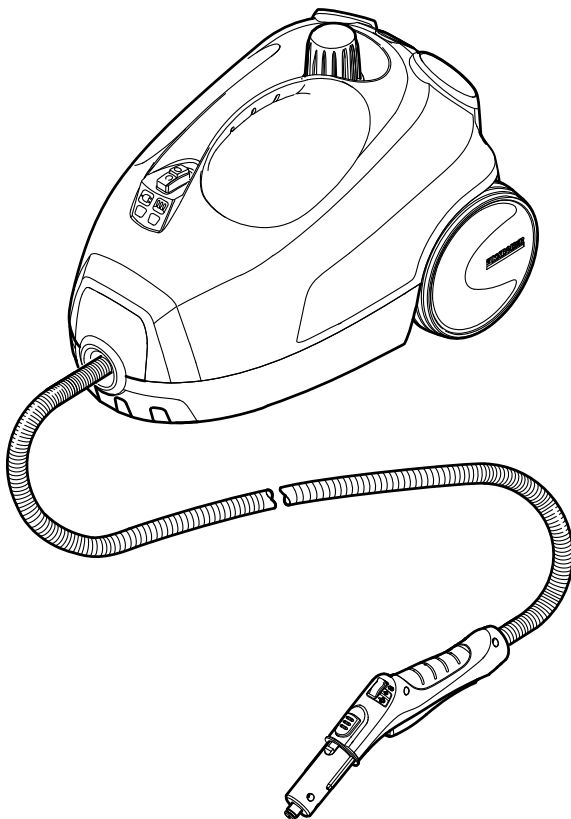
KÄRCHER

makes a difference

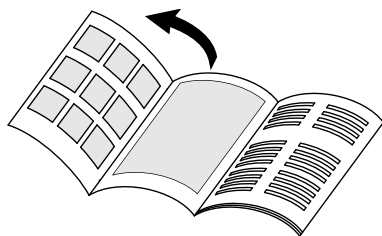
SC 2 EasyFix

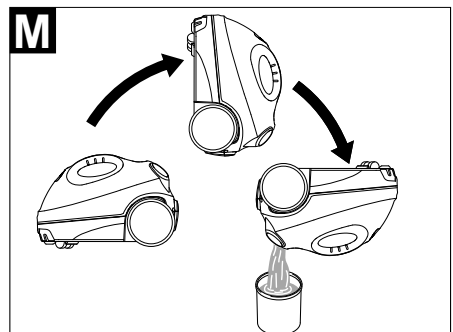
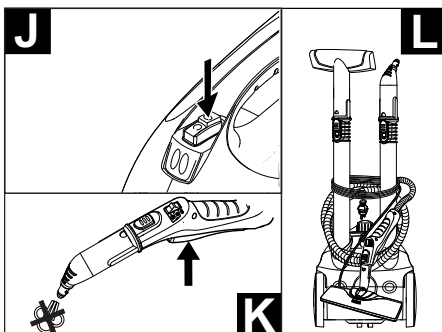
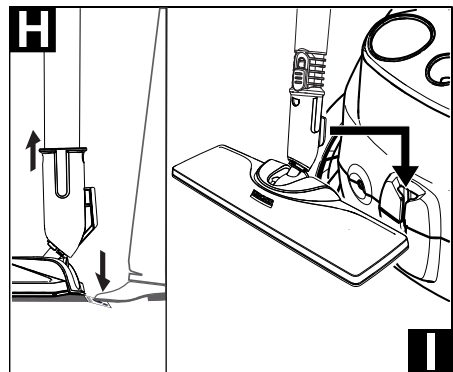
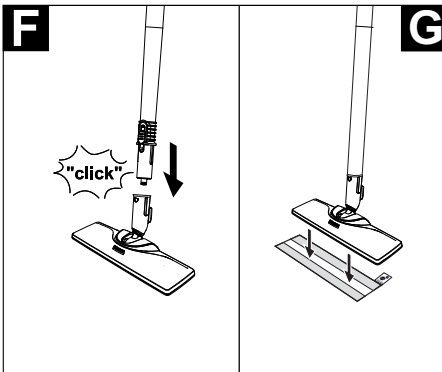
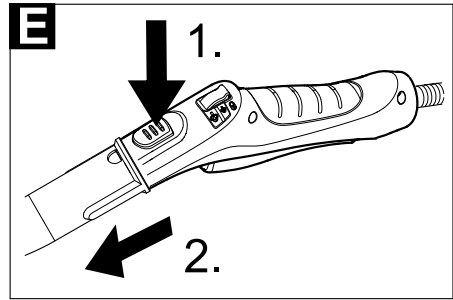
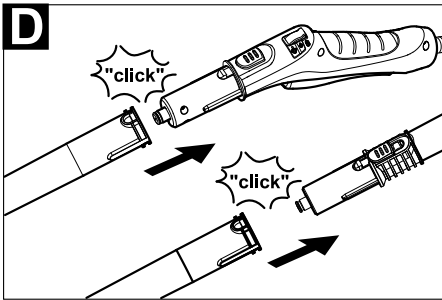
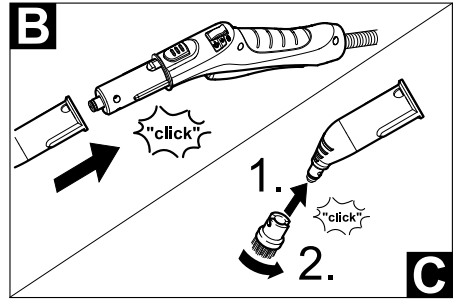
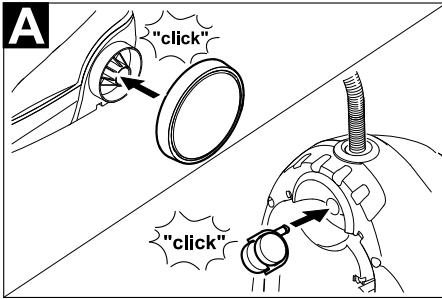
中文
English

5
15



59683200 03/19





目录

一般事项	ZH	5
蒸汽清洗机的安全提示	ZH	5
设备说明	ZH	8
简要说明	ZH	9
设备运作	ZH	10
如何使用附件	ZH	11
保养与维护	ZH	12
故障排除	ZH	12
产品规格 / 参数	ZH	12

一般事项

亲爱的客户：



在您初次使用本产品前，请仔细阅读本说明书，并请妥善保管以便日后查阅。

合乎规定的使用

该蒸汽清洗机仅适于家用。
该设备使用蒸汽进行清洁，并且如操作说明书中所述连同适用配件一起使用。无需使用洗涤剂。使用时请特别注意安全提示。

环境保护



包装材料可以回收利用。请不要把包装材料与普通垃圾放在一起处理，而应妥善安排回收。



旧的设备中含有宝贵的可再利用的材料，应加以回收利用。请通过适当的收集系统处理您的旧设备。

内部材料提示 (REACH)

最新的内部材料信息请您在如下链接中查找：

www.kaercher.com/REACH

供货范围

设备的供货范围都已绘制在包装上。因此，打开包装时请检查产品是否齐全。
如有附件缺失或在运输过程中损坏，请联系经销商。

附件和备件

只使用原厂配件和备件，它们能保证设备的安全和无故障运行。
有关配件和备件的信息请登录
www.kaercher.com。

质量保证

我们的质量保证条款适用于全球各分公司。在质量保证期内，如果您的产品发生了任何故障，我们都将为您提供免费维修，但是这种故障应当是由于机身材料或制造上的缺陷造成的。请您向经销商或者与您距

离最近的经过授权的客户服务处联系，提出保修请求，并提供相应的产品购买证明文件。
(地址详见背面。)

蒸汽清洗机的安全提示

- 除了操作说明书里的提示外，还要遵守立法的一般安全和事故防范规定。
- 设备上相应的警告、指示标志为无风险的运行提供重要提示。

危险程度

△ 危险

提示会导致人员重伤或死亡的直接威胁性危险。

△ 警告

提示可能导致人员重伤或死亡的危险状况。

△ 小心

提示可能导致轻度伤害的危险状况。

注意

提示可能产生财产损失的危险状况。

电气部件

△ 危险

- 不要在有水的游泳池内使用该设备。
- 喷汽不得直接对准含有电气零部件的生产装备，如电烤炉的内腔。
- 检查蒸汽清洗机与附件，特别是电源连接导线、安全封盖以及蒸汽软管是否处于正常状态。
如有损坏，则不得使用设备。
- 损坏的电源连接导线应立即让已授权的客户服务处 / 电气专业人员进行更换。

- 立即更换已损坏的蒸汽软管。仅使用由制造商推荐的蒸汽软管。
- 决不能用湿手触及电源插头或者插座。
- 只有当拔下电源插头并且蒸汽清洗机已经冷却后，方才进行保养工作。
- 只允许接受过授权的客户服务人员在上进行维修工作。
- 不得在水中连接电源连接导线 / 延长线缆。

⚠ 警告

- 本设备只能根据 IEC 60364 由电工连接到电气接口。
- 设备只能连接到交流电上。电压必须跟设备型号标牌上给出的电压一致。
- 在潮湿的空间（例如浴室），仅在装有串联漏电保护器的插座上操作设备。
- 只使用横截面为 $3 \times 1 \text{ mm}^2$ 的防淋水电线
- 只能用防止淋水和机械强度相同的连接器替换电源连接导线 / 延长线缆上的连接器。
- 在清洁瓷砖墙面时，注意插座。

⚠ 小心

- 注意电源接线或延长线缆不要受到碾压、挤压、硬拉或类似行为而遭损伤或损坏。防止电源线缆受热、油和尖锐棱角的损坏。

⚠ 危险

- 用户必须按规定使用该设备。同时要重视地方现行的规定并在设备工作时照看好场所内的人员。
- 禁止在有爆炸危险的区域内运行本设备。
- 如在危险区域内使用蒸汽清洗机，则应注意相应的安全规范。
- 如果清洗机之前掉落，存在明显的损坏或不密封，则不要使用该清洗机。
- 不要用此设备清洗会排放含危害健康物质（如石棉）的物件。
- 不要在短距离内用手接触喷汽或将喷汽对准人或动物（存在灼伤危险）。
- 绝不要在运行期间打开保养 / 安全封盖。首先将清洗机冷却。
- 不得注入洗涤剂或其他添加物！
- 若蒸发器处于高温状态，则存在灼伤危险。加水前，先将蒸发器冷却。

⚠ 警告

- 儿童或未经指导的人员都不准操作本设备。
- 本设备不得让那些身体能力有限、感官能力弱或理解能力差或者缺乏经验和 / 或缺乏知识的人员使用，除非他们有专人监督或接受专人指导如何操作设备并了解其可能产生的危险。
- 儿童不得玩耍本设备。
- 照看好儿童，以确保他们不用设备玩耍。

- 清洗机处于开启状态或仍未冷却完全时，将其放置于儿童够不着的地方。
- 只根据说明或插图操作或存放该设备！
- 运行期间，不要卡紧蒸汽杆 / 蒸汽按钮。
- 只有蒸发器内有水时，方才启动清洗机。否则清洗机有机会过热（参见故障帮助）。
- 分离配件时热水可能滴出！将清洗机冷却。
- 只要有蒸汽溢出，则不得分离配件！

⚠ 小心

- 用设备或在设备上任何作业前要先确保设备的稳定性，以避免因设备翻倒而导致事故或故障发生。
- 不得在蒸发器内加入溶剂、含有溶剂的液体或未经稀释的酸（如洗涤剂、汽油、油漆稀释剂和丙酮），因为它们会侵蚀设备上所使用的材料。
- 设备运行期间不可无人看管。

注意

- 长时间待机及设备使用结束后关闭总开关 / 设备开关，并拔下插头。
- 温度低于 0°C 时无法运行机器。
- 防止机器受到雨淋。不要存放在室外区域内。

⚠ 小心

- 将清洗机放置在稳固平坦的地面上，以确保其处于安全状态。
- 在进行清洗工作期间不要提升清洗机。

蒸发器除垢

⚠ 小心

- 除垢期间不要将安全封盖拧到清洗机上。
- 只要蒸发器内仍有除垢剂，则不得使用蒸汽清洗机。
- 对蒸汽清洗机进行加水和清空时需小心除垢剂溶液。除垢剂溶液会侵蚀敏感的表面。

清洗机上的符号

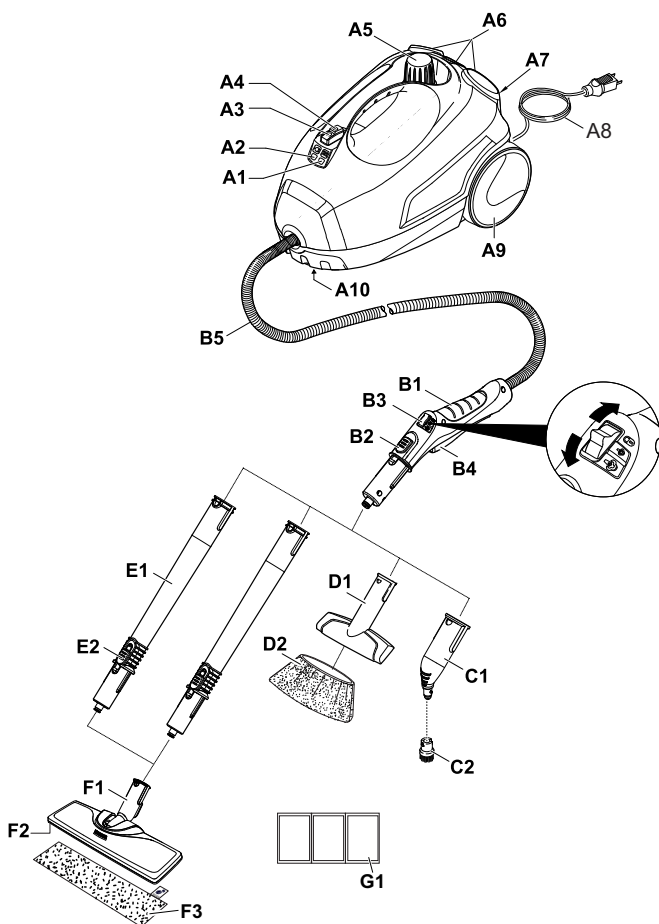
⚠ 小心



因蒸汽而产生烫伤危险！

设备说明

- | | |
|--------------------|-----------------|
| A1 指示灯亮 加热指示灯（橘黄色） | B5 蒸汽软管 |
| A2 电源电压接通指示灯（绿色） | C1 单喷嘴 |
| A3 开关 - 开 | C2 圆形刷 |
| A4 开关 - 关 | D1 人工刷 |
| A5 安全罩 | D2 用于手持喷嘴的微纤维套布 |
| A6 附件支架 | E1 加长管（两个） |
| A7 底部喷嘴停止支架 | E2 解锁钮 |
| A8 电源线 | F1 底部喷头 |
| A9 转动轮（2 个） | F2 粘扣 |
| A10 导向轮 | F3 微纤维地巾 |
| B1 蒸汽枪 | G1 除垢剂 |
| B2 解锁钮 | |
| B3 蒸汽量选择开关（用于保护儿童） | |
| B4 蒸汽调节柄 | |



简要说明

图 1

→ 卸下安全锁，给蒸汽清洗机加入最多 1 升水。

图 2

→ 旋上安全封盖。

图 3

→ 插上电源。

启动设备。

绿色和橘黄色指示灯亮起。

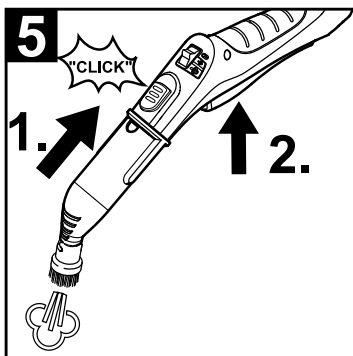
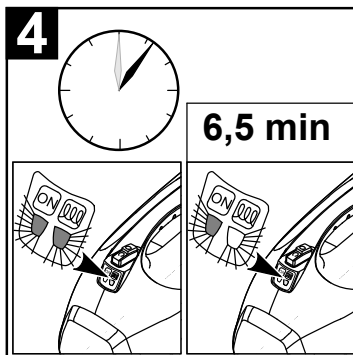
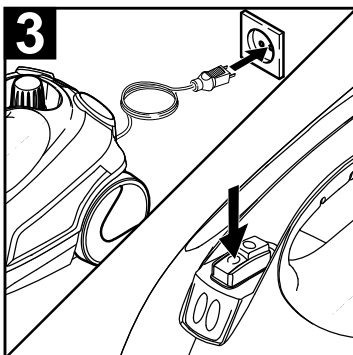
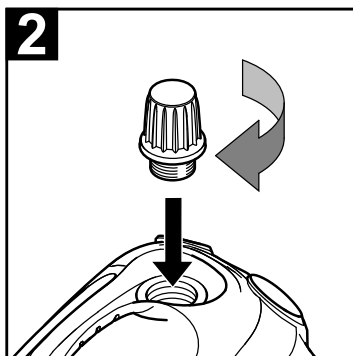
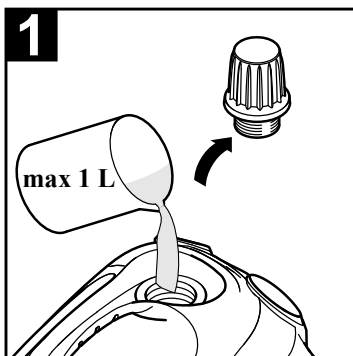
图 4

→ 等到橘黄色指示灯熄灭为止。

图 5

→ 将附件接到蒸汽枪上。

这时蒸汽清洗机即可使用了。



设备运作

→ 图片参见折叠式插图！



装配附件

图A

→ 请插上控制轮和运输轮并将其锁住。

图B

→ 在蒸汽枪上接上需要的附件（见“附件使用”一章）。将附件开端插在蒸汽枪上，并推到蒸汽枪上，直至蒸汽枪解锁按钮锁到位。

图D

→ 如需要，使用加长件。要做到这一点，在蒸汽枪上接一个或两个加长件。将需要的附件插到加长件的自由端。

卸下附件

→ 扳回蒸汽量选择开关（锁住蒸汽调节柄）。

图E

→ 要卸下附件，请按了解锁钮，拉开附件。

加水

提示

■ 若持续使用在商店购买的蒸馏水，蒸发器无需除垢。

■ 温水缩短加热时间。

→ 卸下蒸汽清洗机安全封盖。

图M

→ 将存在的水完全从蒸发器中清空。

→ 给蒸发器加入最多 1 升的新鲜自来水。

→ 将安全封盖重新旋到蒸汽清洗机上。

打开蒸汽清洗机

→ 将蒸汽清洗机稳定地放到坚固的平面上。

→ 将电源插头插入到插座里。

→ 按下开关 - 开，启动设备。

两个指示灯必须亮起。

→ 大约 8 分钟后，橘黄色指示灯熄灭。这时蒸汽清洗机即可使用了。

调节蒸汽量

使用蒸汽量选择开关调节喷出蒸汽。选择开关设有三个档位。

	最大蒸汽量
	蒸汽量减少



没有防止蒸汽烫伤儿童的保护装置

注意：

在该档位，蒸汽调节柄无法使用。

→ 将选择开关调到所需的蒸汽量。

→ 操作蒸汽开关时，将蒸汽枪对准织物的一个单独部分，直到均匀喷出蒸汽。

注意：

使用时蒸汽清洗机的加热器会定期打开，以保持蒸发器压力的恒定。加热器打开时，橘黄色指示灯（加热器）会亮起。

重新加水

如果工作时蒸汽量减少或不喷出蒸汽，蒸发器就需要加水。

注意：

只要蒸发器有少许的压力，安全锁就无法打开。

→ 推动蒸汽开关直至停止喷气。这时，蒸汽清洗机的蒸发器没有压力了。

→ 按下开关 - 关，关断设备。

→ 电源插头从插座上拔出。

→ 推动蒸汽开关直至停止喷气。这时，蒸汽清洗机的蒸发器没有压力了。

→ 卸下蒸汽清洗机安全封盖。

→ 给蒸发器加入最多 1 升的新鲜自来水。

→ 将安全封盖重新旋到蒸汽清洗机上。

→ 将电源插头插入到插座里。

→ 按下开关 - 开，启动设备。

两个指示灯必须亮起。

→ 大约 8 分钟后，橘黄色指示灯熄灭。这时蒸汽清洗机即可使用了。

关闭蒸汽清洗机

图J

→ 按下开关 - 关，关断设备。

→ 电源插头从插座上拔出。

图K

→ 推动蒸汽开关直至停止喷气。这时，蒸汽清洗机的蒸发器没有压力了。

设备储存

图L

→ 将压力喷嘴固定在点状喷嘴上。

→ 在每根加长管上插上人工喷嘴和单喷嘴。

→ 将加长管放入到大的附件室里。

→ 将圆形刷放入到中型附件室里。

→ 将地板喷嘴挂到停放位置。

→ 将蒸汽软管缠绕在加长管上，并将蒸汽枪插入到地板喷嘴里。

如何使用附件

重要使用说明

清洁地面

建议在使用该蒸汽清洗机前对地板进行清扫或吸尘。这样便能在开始湿式清洁前即已除去地板上的脏污颗粒。

织物出新

操作蒸汽清洗机之前请先在织物的隐蔽位置进行检查看该织物是否适合进行蒸汽清洁：首先蒸湿织物，再对其进行干燥，最后检查织物的颜色和形状是否发生变化。

清洁喷涂或喷漆面

清洁涂漆或带有塑料涂层的表面（例如厨房或卧室家具、门、木质地板）时，涂在物体表面的蜡、家具抛光剂、塑料涂层或者油漆可能会溶解脱落，也有可能导致斑痕。在清洁此类表面时，将一块布略微蒸湿并用其擦拭该表面。

注意

绝不要将蒸汽喷嘴对着涂胶边缘，因为贴边条会翘起。不要将蒸汽清洗机用于未密封的木质或镶木地板上。

玻璃的清洗

如果室外温度低，特别是在冬季，先用蒸汽稍微加热整个玻璃面再加热玻璃板。这样能防止玻璃表面产生应力导致玻璃开裂。接着用手持人工刷和套子清洁窗户表面。使用擦窗器去除表面的水或将表面擦拭干燥。

注意

不要将蒸汽对着窗框的封闭位置以防损坏。

蒸汽枪

没有任何附件时可以使用蒸汽枪，例如：

- 用于熨平悬挂衣服上轻微的皱褶，其方法是距离 10-20 厘米向皱褶喷蒸汽。
- 清除植物灰尘。保持 20 至 40cm 的距离。
- 对于湿的灰尘，短暂蒸烘抹布，并擦家具。

单喷嘴

图B

该喷嘴越靠近污染的区域，清洁效果越好，因为喷嘴出口处温度最高且蒸汽量最大。特别适合于清洁不易接近的地方、接口、接头、排出口、水槽、卫生间、遮帘和加热器。蒸汽清洗之前，可用醋液浸湿厚的石灰结垢。让醋液渗入大约 5 分钟。

圆形刷

圆形刷可作为附件装到单喷嘴上。因此，可以用附带的刷子清除厚的污物。

注意

不适用于清洁敏感的表面。

图C

→ 将圆形刷装到单喷嘴上。

人工刷

手持喷嘴适用于清洗面积较小的可洗涤表面、淋浴间和镜子。

图B

→ 根据点射喷嘴将手持喷嘴推到蒸汽喷枪上。

→ 在手持喷嘴套上套布。

地板喷嘴

该地面扒头适用于所有可洗涤的墙壁和地面覆盖物，石头地面、瓷砖和 PVC 地板。

注意

因蒸汽作用损坏

温度太高以及太潮湿都可能导致损坏。使用前以最小蒸汽量喷向一处不显眼位置，以检查耐热性和蒸汽影响。

提示

待清洁表面上的残余清洁剂或护理液，可在蒸汽清洁中产生黏状物，该黏状物在多次使用后消失。

我们建议在使用设备之前扫地或对地面进行清扫或吸尘。这样便能在开始湿式清洁前即已除去地面上的脏污颗粒。对于非常脏的表面，慢速移动，使蒸汽能作用更长时间。

图D

→ 连接延长管与蒸汽喷枪。

图F

→ 将地面扒头滑动到延长管上。

图G

→ 将地板布固定在地面扒头上。

地板布放在地面上，粘扣带朝上。

轻轻按压，将地面扒头置于地板布上。

地板布因粘接固定作用自行粘到地面扒头上。

取下地板布

图H

→ 将一只脚放到地板布脚袋中，接着向上抬起地面扒头。

提示

一开始，地板布的粘扣带的粘性还很强，可能难以从地面扒头上拆下。经过多次使用和清洗地板布后，可以很容易地从地面扒头上取下，达到最佳的附着力。

停放地板喷嘴

图 I

图 L

→ 作业休息时将地板喷嘴挂到停放支架上。

保养与维护

冲洗蒸发器

最迟在给蒸发器加水 10 次后冲洗蒸汽清洗机的蒸发器。

→ 给蒸发器加水并使劲摇动。这样可以溶解残留于蒸发器底部的石灰结垢。

→ 倒出水。

蒸发器除垢

提示

若持续使用在商店购买的蒸馏水，蒸发器无需除垢。

由于蒸发器壁会产生石灰垢，建议按照以下时间间隔对蒸发器除垢（RF= 水槽加水）

硬度等级		° dH	mmol/l	RF
I	软	0- 7	0-1, 3	55
II	中等	7-14	1, 3- 2, 5	45
II	硬	14-21	2, 5- 3, 8	35
IV	很硬	>21	>3, 8	25

提示

您可以在您那儿的水资源管理局或城市公用事业部门咨询自来水硬度。

→ 电源插头从插座上拔出。

→ 将高压清洗机冷却。

→ 卸下蒸汽清洗机安全封盖。

图 M

→ 将存在的水完全从蒸发器中清空。

→ 请使用 KÄRCHER 公司除垢剂进行除垢。在配置除垢剂溶液时请注意包装上的剂量提示。

→ 将除垢溶液倒入蒸发器，使其反应大约 8 小时。

→ 8 小时后完全放掉除垢溶液。蒸发器里会留有少量溶液。因此，应用冷水冲洗两三次清除除垢剂的残留物。

图 M

→ 将存在的水完全从蒸发器中清空。

附件的保养

（附件取决于供货范围）

提示

微纤维布不宜干洗。

提示

洗布时注意洗涤标签。不要使用织物柔软剂，否则会影响织物的吸尘能力。

→ 地板布和套布可以机洗，水温不超过 60 ° C。

故障排除

故障原因常常很简单，使用以下概述即可以自己排除故障。如有疑问或这里未列出，请联系指定客户服务人员。

长时间加热

对蒸汽蒸发器除垢。

→ 对蒸汽蒸发器除垢。

无蒸汽

蒸汽蒸发器里无水。

→ 关闭设备。

→ 重新加水。

蒸汽调节柄不能再压下。

蒸汽开关被锁扣 / 儿童保护锁卡紧。

→ 将蒸汽量选择开关扳到前方。

出水量大

蒸汽室太满。

→ 按压蒸汽枪直至喷水量减少。

对蒸汽蒸发器除垢。

→ 对蒸汽蒸发器除垢。

产品规格 / 参数

通电

电压	220	V
	50	Hz

保护等级	I
------	---

保护程度	IPX4
------	------

性能参数

加热功率	1400	瓦
------	------	---

最大工作压力	0, 32	MPa
--------	-------	-----

加热时间	6, 5	分钟
------	------	----

蒸汽量		g/min
-----	--	-------

持续吹蒸汽	50	g/min
-------	----	-------

蒸汽最大气流	110	g/min
--------	-----	-------

尺寸

蒸发器容量	1, 0	l
-------	------	---

重量（不含附件）	3, 1	千克
----------	------	----

宽度	250	毫米
----	-----	----

长度	382	毫米
----	-----	----

高度	256	毫米
----	-----	----

规格若有变更，恕不另行通知。

保修卡

尊敬的用户：

非常感谢您选用 Kärcher 公司产品，我们愿竭力为您提供优质的服务。《保修卡》是保修产品的重要凭证，请您仔细填写此卡并妥善保管。如产品需要维修时，请提供此保修卡和发票原件。

购买日期：_____ 产品型号：_____

用户电话：_____ 产品序列号：_____

用户地址：_____ 经销商盖章：_____

服务热线：400-880-1060

服务邮箱：service@karcher.cn

官网地址：www.karcher.cn



扫一扫
关注官方微信



扫一扫获取
更多服务商信息

KÄRCHER

makes a difference

《保修卡》涂改无效，遗失不补。

保修条款

本条款所属内容是依据《中华人民共和国消费者权益保护法》、《中华人民共和国产品质量法》及其它相关规定编写，仅适用于Kärcher公司在中国大陆销售的家用系列产品。

为了维护您的合法权益，请在购机时索要发票（即财税部门统一监制的发票）及相关凭证。

1. 本产品在正确使用、操作的情况下，如产品确实存在由于材料、设计和制造引起的质量问题，本公司提供保修，自购机之日起，保修期为12个月。
2. 用户申请维修服务时，需携带有效发票原件及保修卡原件，将产品及原装附件一起送至Kärcher授权服务点进行保修。
3. 如果下述任何一种情况发生，消费者将不能享受保修服务（即本保修条款不予适用），但可享受Kärcher公司授权之服务点提供的有偿服务：
 - 1) 超过保修有效期的；
 - 2) 无有效发票原件或保修凭证的，或保修凭证（或发票）与产品实物不符，或保修凭证（或发票）经涂改的；
 - 3) 非按产品使用说明书要求使用、维护、保养产品而造成损坏的；
 - 4) 产品的自然磨损及易损易耗件（包括但不限于外壳、高压管、密封件、喷枪、喷嘴、单向阀、柱塞、吸尘管、刷子、扒头、过滤器、尘袋、传动皮带、齿轮、电池等）；
 - 5) 产品售出后由于运输或搬运造成损坏的；
 - 6) 未经Kärcher公司同意而对产品自行拆卸或自行修理而造成损坏的；
 - 7) 因电压、水源、使用环境不当而导致故障的；
 - 8) 因使用不正确的清洁介质而造成故障的；
 - 9) 由于不可抗力等自然因素造成故障的；
 - 10) 一切未经Kärcher公司许可对产品进行改造的；
 - 11) 产品无原厂标识，或原厂标贴上的订货号、序列号与Kärcher公司所提供的产品订货号、序列号不一致的；
 - 12) 其它因用户原因造成产品故障的。
4. Kärcher公司的家用产品只适用于家庭用途，凡用于非家庭场所，如商用或工业用途等的，将不能享受免费维修服务。
5. 往返Kärcher授权服务点的一切费用由用户自行承担（销售时，经销商有另外承诺的除外），家用系列产品不提供免费上门维修服务。
6. 保修期内，所有因维修被替换下来的零件、部件和附件等归Kärcher公司所有。
7. 保修期内，如所维修的部件已停产或淘汰，Kärcher公司有权使用同档次或更高档次的产品进行替换。
8. Kärcher公司对产品的保修义务，无论本保修条款或其它书面说明可能隐含或默认的保修义务，都应当被理解为已经包含在本保修条款所列的保修范围和保修期限内。
9. 保修期内、用户按本保修条款享受维修服务，此为用户因产品缺陷所受损失的唯一补救措施；换言之，Kärcher公司对用户的其它直接或间接损失（包括但不限于数据的丢失、期待的利益等）不承担任何责任。
10. Kärcher公司的经销商或其代理人以及Kärcher公司授权的服务点均无权代表Kärcher公司承担超出本保修条款范畴的义务，亦无权放弃Kärcher公司在本保修条款下的任何权力。
11. 中国有关法律的强制性规定适用于本保修条款。
12. Kärcher公司保留调整有关保修信息、产品功能及规范等的权利，恕不另行通知。

凯驰（上海）清洁系统有限公司
2016年08月16日

Contents

General information	EN	5
Safety Instructions for Steam Cleaners	EN	5
Quick Reference	EN	10
Description of the Appliance	EN	9
Operation	EN	11
How to Use the Accessories	EN	11
Care and maintenance	EN	12
Troubleshooting	EN	13
Technical specifications	EN	13

General information

Dear Customer,



Please read and comply with these original instructions prior to the initial operation of your appliance and store them for later use or subsequent owners.

Proper use

Use the steam cleaner only for private households. The appliance is intended to be used with steam and can be used with the appropriate accessories as described in these operating instructions. You will not need any detergent. Please adhere to the safety instructions.

Environmental protection



The packaging material can be recycled. Please do not place the packaging into the ordinary refuse for disposal, but arrange for the proper recycling.



Old appliances contain valuable materials that can be recycled. Please arrange for the proper recycling of old appliances. Please dispose your old appliances using appropriate collection systems.

Notes about the ingredients (REACH)

You will find current information about the ingredients at:

www.kaercher.com/REACH

Scope of delivery

The scope of delivery of your appliance is illustrated on the packaging. Check the contents of the appliance for completeness when unpacking.

In the event of missing accessories or any transport damage, please contact your dealer.

Accessories and Spare Parts

Only use original accessories and spare parts, they ensure the safe and trouble-free operation of the device.

For information about accessories and spare parts, please visit www.kaercher.com.

Warranty

The warranty terms published by the relevant sales company are applicable in each country. We will repair potential failures of your appliance within the warranty period free of charge, provided that such failure is caused by faulty material or defects in manufacturing. In the event of a warranty claim please contact your dealer or the nearest authorized Customer Service centre. Please submit the proof of purchase.

(See address on the reverse)

Safety Instructions for Steam Cleaners

- *Apart from the notes contained herein the general safety provisions and rules for the prevention of accidents of the legislator must be observed.*
- *Warnings and notes that are attached on the appliance provide important notes for the safe operation.*

Hazard levels

⚠ DANGER

Pointer to immediate danger, which leads to severe injuries or death.

⚠ WARNING

Pointer to a possibly dangerous situation, which can lead to severe injuries or death.

⚠ CAUTION

Pointer to a possibly dangerous situation, which can lead to minor injuries.

ATTENTION

Pointer to a possibly dangerous situation, which can lead to property damage.

Electric components

⚠ DANGER

- *Never use the appliance in pools containing water.*
- *Do not level the steam jet directly at equipment that contains electrical components, such as the inside of ovens.*
- *Check the appliance and the accessories, especially the power cord, the safety lock and the steam hose for proper condition.*

Do not use the appliance in case of damage.

- *If the power cord is damaged, please arrange immediately for the exchange by an authorized customer service or a skilled electrician.*
- *Promptly replace a damaged steam hose. You may only use a steam hose that is recommended by the manufacturer.*
- *Never touch the mains plug and the socket with wet hands.*
- *Always disconnect the mains plug and allow the steam cleaner to cool down before performing any maintenance work.*
- *Repair works may only be performed by the authorized customer service.*

- *The connection between the power cord and extension cable must not lie in water.*

⚠ WARNING

- *The appliance may only be connected to an electric supply that has been installed by an electrician in accordance with IEC 60364.*
- *The appliance may only be connected to alternating current. The voltage must correspond with the type plate of the appliance.*
- *In wet rooms, e.g. bathrooms, connect the appliance to sockets with a series connected RCD adapter.*
- *Only use splash-proof electrical extension cables with a minimum cross-section of 3x1 mm²*
- *Replace couplings at the power cord or extension cable only with couplings that have the same protection against splashing water and the same mechanical strength.*
- *Be very careful while cleaning tiled walls with sockets.*

⚠ CAUTION

- *Make sure that the power cord or extension cable is not damaged by running over, pinching, dragging or the like. Protect the power cords from heat, oil, and sharp edges.*

Safe handling

⚠ DANGER

- *The user must use the appliance as intended. The person must consider the local conditions and must pay attention to other persons in the vicinity when working with the appliance.*
- *The appliance may not be operated in explosive atmospheres.*
- *If the appliance is used in hazardous areas the corresponding safety provisions must be observed.*
- *Do not use the appliance if it fell down, is visibly damaged or leaking.*
- *Never use the appliance to clean objects containing hazardous substances (e.g. asbestos).*
- *Never touch the steam jet from a short distance with your hands and never direct the steam jet to persons or animals (risk of scalds).*
- *Never open the maintenance / safety lock during operation. Allow appliance to cool down first.*
- *Do not fill in detergents or other additives!*
- *Risk of scalding when the boiler is hot. Allow the boiler to cool down prior to filling in water.*

⚠ WARNING

- *The appliance must not be operated by children or per-*

sons who have not been instructed accordingly.

- *This appliance is not intended for use by persons with limited physical, sensory or mental capacities or lacking experience and/or skills, unless such persons are accompanied and supervised by a person in charge of their safety or they have received precise instructions on the use of this appliance and have understood the resulting risks.*
- *Children must not play with this appliance.*
- *Supervise children to prevent them from playing with the appliance.*
- *Keep appliance out of reach of children as long as it is switched on or hasn't cooled down.*
- *Operate or store the appliance only in accordance with the description or illustration!*
- *Do not wedge the steam lever / the steam button during operation.*
- *Only switch on the appliance when there is water in the boiler. Otherwise the appliance might overheat (see Troubleshooting).*
- *Hot water may drip out of the accessory parts while you are detaching them! Allow appliance to cool down.*
- *Never separate accessories from the appliance as long as steam is escaping!*

CAUTION

- *Create stability for the appliance prior to any work on or with the appliance to prevent accidents or damage.*
- *Never fill solvents, solvent-containing liquids or undiluted acids (e.g. detergents, benzene, paint thinner, and acetone) into the boiler as these substances affect the materials used on the appliance.*
- *Never leave the appliance unattended as long as it is in operation.*

ATTENTION

- *In case of longer breaks and after use, switch the appliance off at the main switch / appliance switch and pull the mains plug.*
- *Do not operate the appliance at temperatures below 0 °C.*
- *Protect the unit from rain. Do not store outside.*

CAUTION

- *Place the appliance on a solid, even ground to ensure a safe footing.*
- *Do not carry the appliance during cleaning work.*

Descaling the boiler

CAUTION

- *Do not screw the safety lock onto the appliance during decalcification.*
- *Do not use the steam cleaner as long as there is decalcifying agent in the boiler.*
- *Be careful when filling and draining the steam cleaner with the decalcifying solution. The decalcifying solution can corrode sensitive surfaces.*

Symbols on the machine

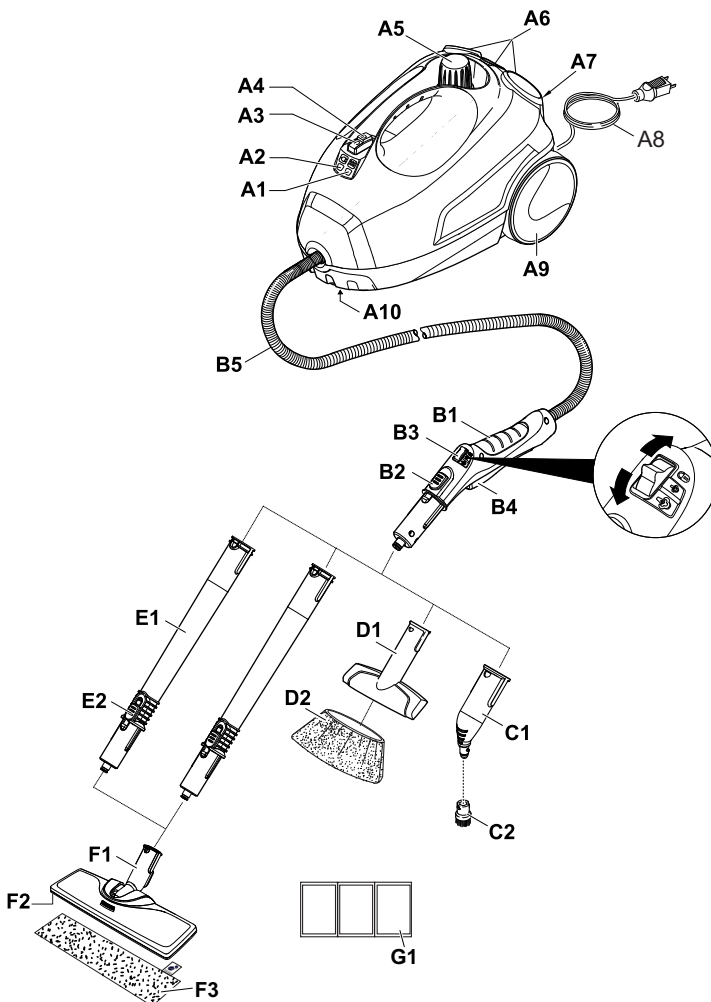
CAUTION



Danger of scalding by steam!

Description of the Appliance

A1	Indicator lamp - heater (ORANGE)	B4	Steam lever
A2	Indicator lamp (green) – line voltage is on	B5	Steam hose
A3	Switch - ON	C1	Detail nozzle
A4	Switch - OFF	C2	Round brush
A5	Safety cap	D1	Hand nozzle
A6	Holder for accessories	D2	Manual nozzle microfibre cover
A7	Storage holder for floor nozzle	E1	Extension tubes (two tubes)
A8	Mains cable with mains plug	E2	Unlocking button
A9	Running wheels (2 ea.)	F1	Floor nozzle
A10	Steering roller	F2	Hook and loop fastener
B1	Steam gun	F3	Microfibre floor cloth
B2	Unlocking button	G1	Descaler
B3	Selector switch for the steam volume (with child protection)		



Quick Reference

Illustration 1

- Unscrew the safety lock and fill the steam cleaner with a max. of 1 litre of water.

Illustration 2

- Screw in safety cap.

Illustration 3

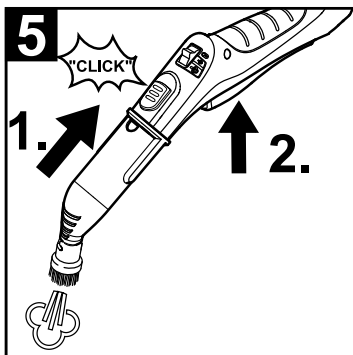
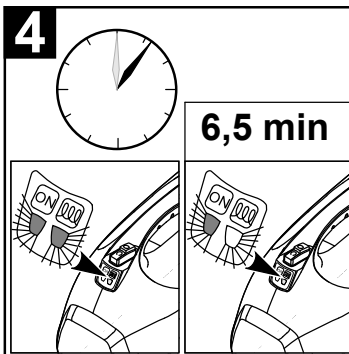
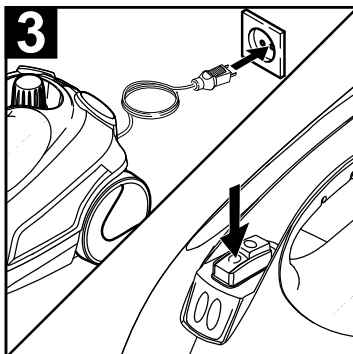
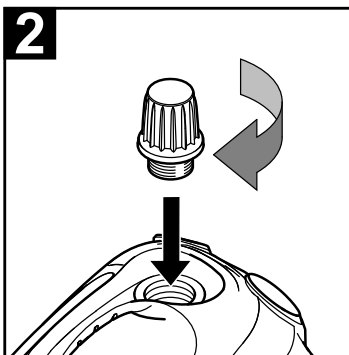
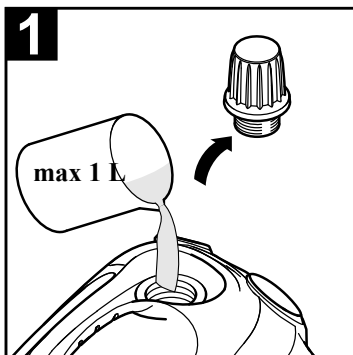
- Plug in the mains plug.
Turn on the appliance.
The green and orange indicator lamps light up.

Illustration 4

- Wait until the orange indicator lamp goes out.

Illustration 5

- Connect the accessories to the steam gun.
The steam cleaner is ready to use.



Operation

→ Illustrations on fold-out page!



Attaching the Accessories

Illustration **A**

→ Insert steering roller and transport wheels and lock them.

Illustration **B**

→ Connect the required accessories (see Chapter "How to use the accessories") to the steam gun. Insert the open end of the accessory on the steam gun and push onto the steam gun until the unlocking button of the steam gun locks into place.

Illustration **D**

→ Use the extension tubes if necessary. To do so, connect one or both extension tubes to the steam gun. Insert the required accessories on the free end of the extension tube.

Removing the Accessories

→ Move the selector switch for the steam volume back (steam lever locked).

Illustration **E**

→ To detach the accessory parts, press the unlocking button and pull the items apart.

Fill up with water

Notes

- In case of continuous use of commercially available distilled water, no descaling of the boiler is necessary.
- You can reduce the heating-up time by using warm water.
- Remove the safety lock from the device.

Illustration **M**

- Completely empty the steam boiler to remove existing water.
- Fill the boiler with a maximum of 1 liters of fresh tap water.
- Screw the safety cap back onto the device.

Turning on the Appliance

- Place the unit securely on a firm surface.
- Insert the mains plug into a socket.
- Press the ON switch to turn on the appliance. Both indicator lamps must illuminate.
- The orange indicator lamp goes out after approximately 8 minutes. The steam cleaner is ready to use.

Adjusting the Steam Quantity

Use the selector switch for the steam volume to regulate the discharged steam. The selector switch has three positions:

	Maximum steam volume
	Reduced steam volume
	No steam - child protection Note: <i>In this lever position, the steam lever cannot be used.</i>

- Set selector switch to the required steam volume.
- While operating the steam switch, always direct the steam gun at a separate piece of cloth until the steam is emitted evenly.

Note:

The heating of the steam cleaner is turned on in regular intervals during the operation of the appliance in order to maintain the pressure in the boiler at a constant level. When the heating is turned on, the orange indicator lamp (heater) lights up.

Refilling Water

Water needs to be filled into the boiler, if the steam volume decreases during work and no more steam is emitted in the end.

Note:

The safety lock cannot be opened as long as slight pressure remains in the boiler.

- Push the steam switch until steam discharge stops. Now, the boiler of the appliance is unpressurized.
- Press the OFF switch to turn off the appliance.
- Disconnect the mains plug from the socket.
- Push the steam switch until steam discharge stops. Now, the boiler of the appliance is unpressurized.
- Remove the safety lock from the device.
- Fill the boiler with a maximum of 1 liters of fresh tap water.
- Screw the safety cap back onto the device.
- Insert the mains plug into a socket.
- Press the ON switch to turn on the appliance. Both indicator lamps must illuminate.
- The orange indicator lamp goes out after approximately 8 minutes. The steam cleaner is ready to use.

Turning Off the Appliance

Illustration **J**

- Press the OFF switch to turn off the appliance.
- Disconnect the mains plug from the socket.

Illustration **K**

- Push the steam switch until steam discharge stops. Now, the boiler of the appliance is unpressurized.

Storing the Appliance

Illustration **L**

- Fasten the power nozzle to the detail nozzle.
- Insert the manual nozzle and detail nozzle onto each extension pipe.
- Put the extension pipes into the large accessory compartments.
- Put the round brush into the medium accessory compartments.
- Hook the floor nozzle into the parking position.
- Wrap the steam hose around the extension pipes and insert the steam pistol into the floor nozzle.

How to Use the Accessories

Important application instructions

Cleaning floor surfaces

It is recommended to sweep or vacuum the floor prior to using the steam cleaner. This way, the floor is already cleared of dirt/loose particles prior to the wet cleaning.

Refreshing textiles

Prior to treatment with the steam cleaner, always check the reaction of the textiles in an inconspicuous location:

Steam at first, then let dry and then check for colour or shape changes.

Cleaning of Coated or Lacquered Surfaces

When cleaning painted or plastic-coated surfaces, as found on kitchen and living room furniture, doors, parquet; wax, furniture polish, plastic surfaces or paint can come loose or stains can be created. When cleaning these surfaces, briefly steam a cloth and wipe the surfaces with it.

ATTENTION

Never direct the steam jet at glued edges as the edge band may loosen. Do not use the steam cleaner on unsealed wooden or parquet floors.

Cleaning of Glass

In case of low outside temperatures, especially in the winter, warm up the window pane by slightly steaming the entire glass surface. This will prevent tensions on the surface which might lead to glass breakage.

Then clean the window surface with the hand nozzle and attachment. Use a squeegee to remove the water or wipe the surfaces dry.

ATTENTION

Do not direct steam onto the sealed locations of the window frame to prevent damage.

Steam gun

You can use the steam gun without any additional accessories, e.g.:

- to remove light wrinkles from hanging clothes by steaming them at a distance of 10 to 20 cm.
- to remove dust from plants. Here, keep a distance of 20-40 cm.
- for moist dusting, by briefly steaming the cloth and wiping the furniture with it.

Detail nozzle

Illustration B

The closer this nozzle is to the contaminated area, the higher the cleaning effect, as the temperature and the steam are highest at the nozzle output. Especially suited for cleaning difficult access locations, joints, fittings, drains, sinks, toilets, blinds and heaters. Heavy lime scale can be drenched in vinegar prior to steam-cleaning. Let the vinegar penetrate for about 5 minutes.

Round brush

The round brush can be installed onto the detail nozzle as an accessory. Attached brushes can therefore be used to remove heavy soiling.

ATTENTION

Not suited for the cleaning of sensitive surfaces.

Illustration C

- ➔ Attach the round brush to the detail nozzle.

Hand nozzle

The manual nozzle is used for cleaning small areas that can be washed down, shower cubicles and mirrors.

Illustration E

- ➔ Push the manual nozzle onto the steam gun according to the spotlight nozzle.
- ➔ Pull the cover over the manual nozzle.

Floor nozzle

The floor nozzle is used for cleaning washable wall and floor coverings e.g. stone floors, tiles and PVC floors.

ATTENTION

Damage due to build-up of steam

Heat and moisture can lead to damage. Check the heat resistance and steam effect on an inconspicuous area using a minimal volume of steam prior to use.

NOTICE

Detergent residue or care emulsions on the surface to be cleaned can lead to streaks, which will disappear however once these have been used several times. We recommend sweeping the floor or vacuum cleaning it before using the appliance. In this way the floor will be cleared of dirt and loose particles before the wet cleaning commences. Work slowly on surfaces that are heavily soiled so that the steam can impact longer.

Illustration D

- ➔ Connect the extension tubes with the steam gun.

Illustration F

- ➔ Push the floor nozzle onto the extension tube.

Illustration G

- ➔ Fasten the floor cleaning cloth to the floor nozzle. Place the floor cleaning cloth with the hook and loop strips pointing upwards on the floor. Place the floor nozzle onto the floor cleaning cloth, applying slight pressure.

The floor cleaning cloth will stick to the floor nozzle of its own accord due to the hook and loop fastening.

Removing the floor cleaning cloth

Illustration H

- ➔ Place one foot on the bottom corner of the floor cleaning cloth and lift the floor nozzle up.

NOTICE

Initially, the floor cleaning cloth's hook and loop fastener strip is very strong and cannot be removed from the floor nozzle easily. After the floor cleaning cloth has been used several times and washed, it is easier to remove from the floor nozzle and it has reached the optimum adhesion.

Parking the floor nozzle

Illustration I

Illustration L

- ➔ During work breaks, hook the floor nozzle into the parking holder.

Care and maintenance

Rinsing the boiler

Rinse the steam cleaner boiler at the latest after 10 boiler fillings.

- ➔ Fill the boiler with water and shake it strongly. This dissolves lime scaling residing on the boiler bottom.
- ➔ Empty water out.

Descaling the boiler

Note


In case of continuous use of commercially available distilled water, no descaling of the boiler is necessary. As limescale builds up on the boiler walls, we recommend to descale the boiler in the following intervals (RF=reservoir fillings):

Degree of hardness	° dH	mmol/l	RF
I soft	0- 7	0-1,3	55
II medium	7-14	1,3-2,5	45
III hard	14-21	2,5-3,8	35
IV very hard	>21	>3,8	25


Note

The hardness of the tap water can be inquired at your water management office or the municipal utilities.

- Disconnect the mains plug from the socket.
- Allow device to cool down.
- Remove the safety lock from the device.

Illustration 

- Completely empty the steam boiler to remove existing water.
- Use KÄRCHER decalcifying agents for descaling. Please follow the dosing instructions on the packaging when preparing the descaler.
- Pour the descaling solution into the boiler and allow it to react for approximately 8 hours.
- Completely empty the descaling solution after 8 hours. A small amount of the solution will remain in the boiler. Therefore, you should rinse the boiler two to three times with cold water to remove any residues of the descaler.

Illustration 

- Completely empty the steam boiler to remove existing water.

Care of the Accessories

(Accessories - depending on scope of delivery)

NOTICE

The micro fibre cloths are not suitable for dryer.

NOTICE

When washing the cloths, observe the instructions on the washing tag. Do not use any liquid softeners as this will affect the ability of the cloths to pick up dirt.

- Wash the floor cleaning cloths and covers at a max. temperature of 60 °C in the washing machine.

Troubleshooting

Often, failures have simple causes and you can do the troubleshooting yourself using the following overview. If you are in doubt or if the failure is not listed here please contact the authorized customer service.

Long heating-up time

Steam boiler is decalcified

- Descale the steam boiler.

No steam

No water in the steam boiler.

- Turn off the appliance.
- Refill water

Steam lever cannot be pressed anymore

Steam switch is secured with the lock / child-proof lock.

- Move the selector switch for the steam volume to the front.

High water output

Steam chamber too full

- Press the steam gun until less water is emitted.

Steam boiler is decalcified

- Descale the steam boiler.

Technical specifications

Power connection

Voltage	220	V
	50	Hz

Protective class	I
------------------	---

Protection class	IPX4
------------------	------

Performance data

Heating output	1400	W
----------------	------	---

Operating pressure max.	0,32	MPa
-------------------------	------	-----

Heating time	6,5	Minutes
--------------	-----	---------

Steam volume		g/min
--------------	--	-------

Continuous steaming	50	g/min
---------------------	----	-------

Steam push max.	110	g/min
-----------------	-----	-------

Dimensions

Boiler capacity	1,0	l
-----------------	-----	---

Weight (without accessories)	3,1	kg
------------------------------	-----	----

Width	250	mm
-------	-----	----

Length	382	mm
--------	-----	----

Height	256	mm
--------	-----	----

Subject to technical modifications!



www.kaercher.com/dealersearch

Alfred Kärcher SE & Co. KG

Alfred-Kärcher-Str. 28-40
71364 Winnenden (Germany)
Tel.: +49 7195 14-0
Fax: +49 7195 14-2212

