

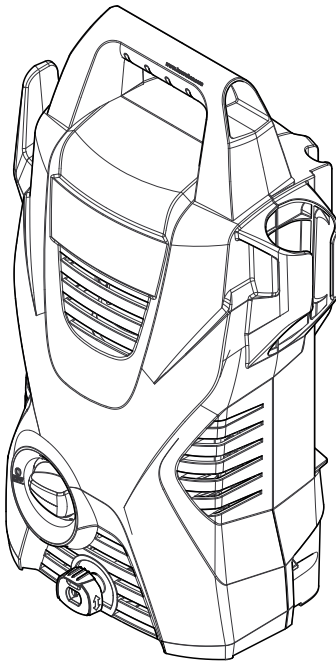
KÄRCHER

makes a difference

K 2 Compact WSK

中文 5

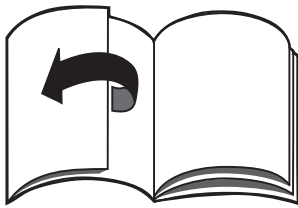
English 13

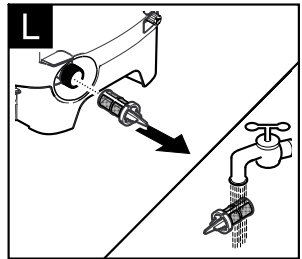
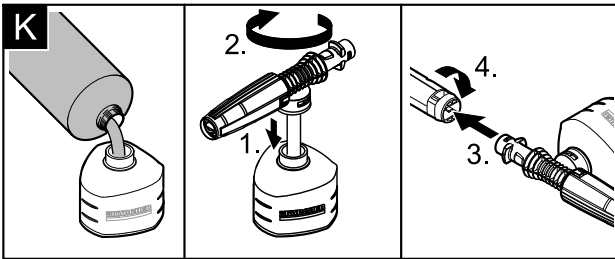
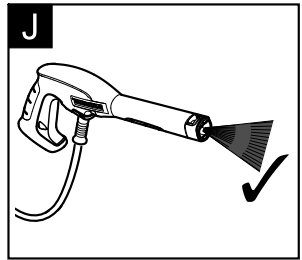
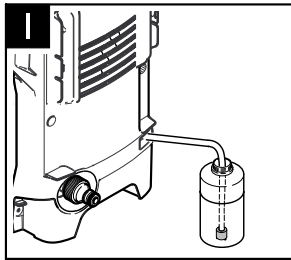
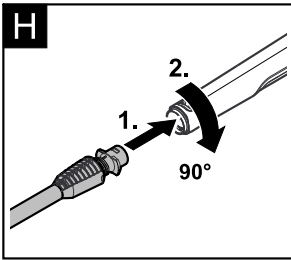
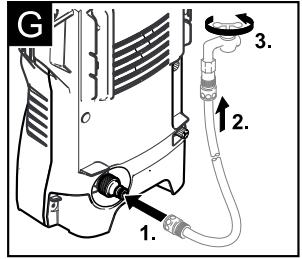
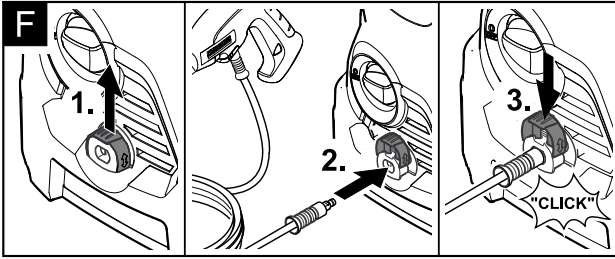
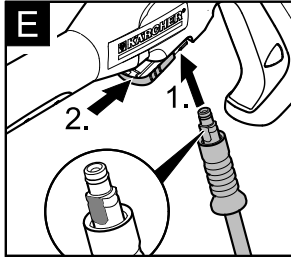
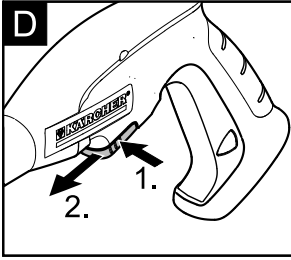
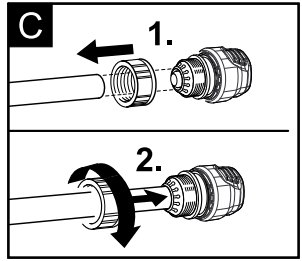
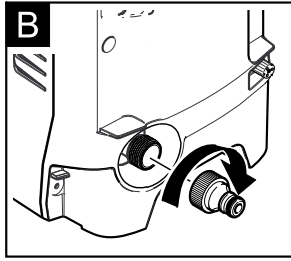
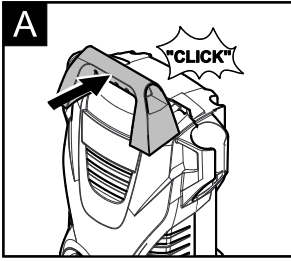


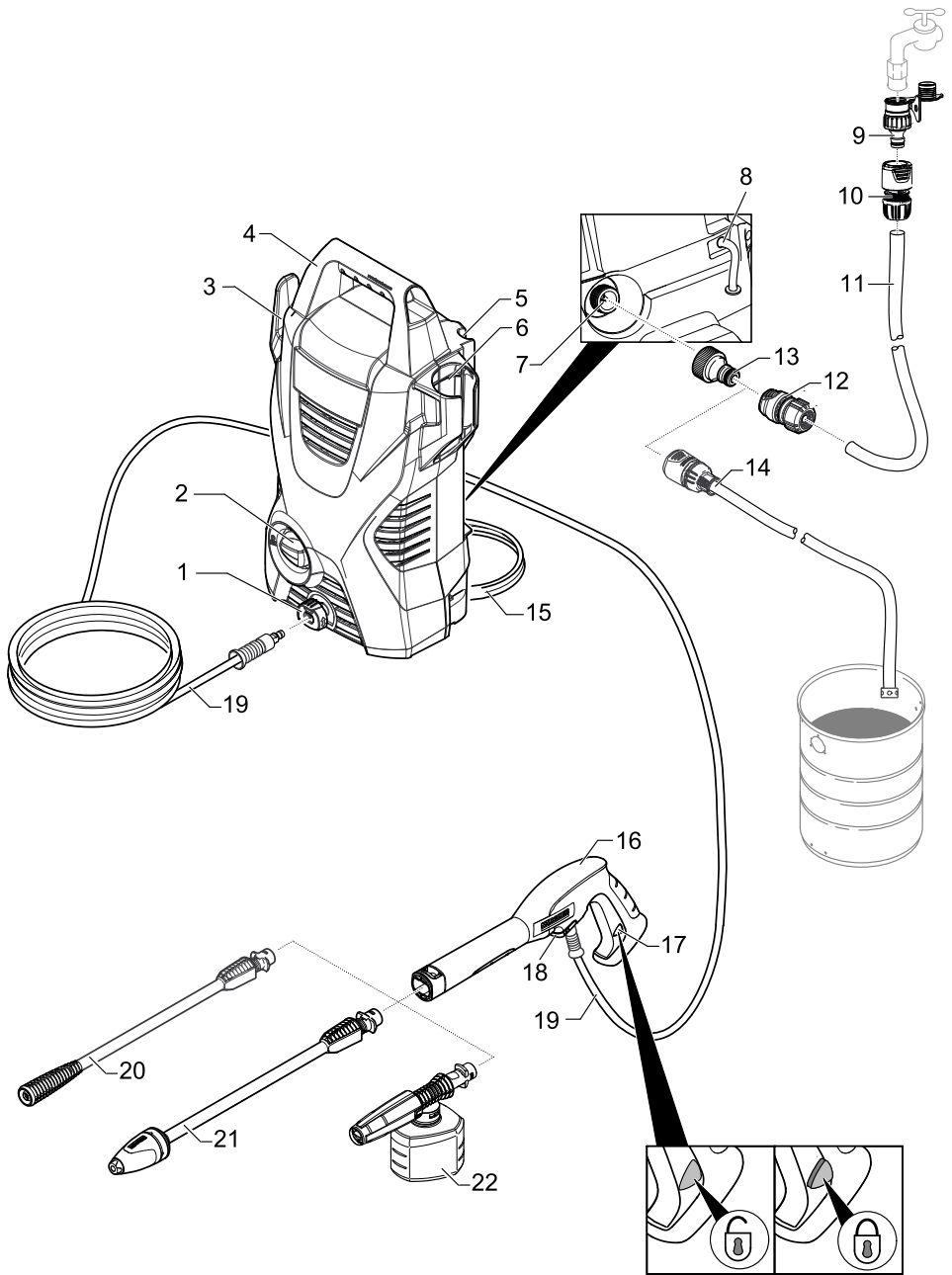
未阅读该说明书前严禁使用该设备



59677920 (03/19)







目录

设备说明	5
安全说明	5
合乎规定的使用	7
环境保护	7
装配	8
调试设备	8
设备运作	8
运输	9
储存	9
保养与维护	9
故障排除	10
附件和备件	10
产品规格 / 参数	10
质量保证	11


设备说明

如有附件缺失或在运输过程中损坏，请联系经销商。

插图参见第 4 页折叠页

- 1 高压接口
- 2 产品开关“0/OFF” / “I/ON”
- 3 高压软管和电源线保存钩
- 4 手柄
- 5 喷头存储架
- 6 喷枪存储架
- 7 带有水过滤器的供水连接装置
- 8 带有过滤器的清洁剂抽吸软管
- 9 转接头
- 10 软管联轴器
- 11 进水软管
- 12 软管联轴器（双重防漏保护阀）
- 13 管接头
- 14 抽吸软管
- 15 电源线
- 16 手持喷枪
- 17 喷枪枪柄上的安全装置
- 18 高压软管夹
- 19 高压软管
- 20 高压喷枪杆
适用于一般的清洁任务。
- 21 带旋转喷嘴的喷杆
针对顽固污垢
- 22 带洗涤剂容器的泡沫喷头

安全说明

 在您初次使用本产品前，请仔细阅读本说明书，并请妥善保管以便日后查阅。
除了操作说明书里的提示外，还要遵守立法的一般安全和事故防范规定。
设备上相应的警告、指示标志为无风险的运行提供重要提示。

危险程度

- △ 危险**
提示会导致人员重伤或死亡的直接威胁性危险。
- △ 警告**
提示可能导致人员重伤或死亡的危险状况。
- △ 小心**
提示可能导致轻度伤害的危险状况。
- 注意**
提示可能产生财产损失的危险状况。

电气部件

- △ 危险**
电击危险。
 - 决不能用湿手触及电源插头或者插座。
 - 每次运行前都要测试一下带插头的电源连接导线是否有损坏。损坏的电源连接导线应立即让已授权的客户服务处 / 电气专业人员进行更换。不得使用带受损电源连接导线的设备。
 - 所有工作领域内的电气部件都必须防水。
 - 电源插头和延长线缆的连接器必须确保防水且不可置于水中。此外不能将连接器置于地面。建议使用确保插座离地面至少 60 毫米的电缆轴。
 - 注意电源接线或延长线缆不要受到碾压、挤压、硬拉或类似行为而遭损伤或损坏。防止电源线缆受热、油和尖锐棱角的损坏。
 - 在进行所有维护和保养工作前关闭吸尘器并拔下电源线。
 - 只允许接受过授权的客户服务人员进行维修工作和在电气零部件上进行工作。

△ 警告

- 本设备只能根据 IEC 60364 由电工连接到电气接口。
- 设备只能连接到交流电上。电压必须跟设备型号标牌上给出的电压一致。
- 出于安全原因，原则上我们建议您通过故障电流保护开关（最大 30 mA）运行设备。
- 加长电线如不合适，将带来危险。在室外请只使用经过许可并相应进行了标识且具有足够横截面积的加长电线：
1 - 10 m: 1.5 mm² ;
10 - 30 m: 2.5 mm²
- 延长线缆总是从电缆轴上完全展开。

安全处理

△ 危险

- 用户必须按规定使用该设备。同时要重视地方现行的规定并在设备工作时照看好场所内的人员。
- 每次使用前检查重要部件，如高压软管、手持喷枪和安全装置是否是否有损。立即更换受损部件。不得使用带受损部件的设备。
- 高压喷枪使用不当，会带来危险。不能对准人、动物、电器设备或者设备自身喷射。
- 高压水柱不可对准自己或他人喷射以清洗衣服或鞋袜。
- 汽车轮胎 / 轮胎阀门可能被高压水柱冲坏并爆裂。对此损坏的首要征兆就是轮胎变色。受损的汽车轮胎 / 轮胎阀门可能带来生命危险。清洗时至少与水柱保持 30 cm 距离！

△ 警告

- 如射程范围内有其他人，除非他们穿上防护服，否则不得使用本设备。
- 儿童或未经指导的人员都不准操作本设备。
- 本设备不得让那些身体能力有限、感官能力弱或理解能力差或者缺乏经验和 / 或缺乏知识的人员使用，除非他们有专人监督或接受专人指导如何操作设备并了解其可能产生的危险。
- 儿童不得玩耍本设备。
- 照看好儿童，以确保他们不用设备玩耍。

△ 小心

- 用设备或在设备上进行任何作业前要先确保设备的稳定性，避免因设备翻倒而导致的事故或故障发生。
- 通过高压喷嘴喷出的水束而对手持式喷枪产生反冲力。注意保持安全可靠的状态，紧握高压喷枪和喷射管。
- 设备运行期间不可无人看管。

注意

- 若工休时间比较长，关闭设备开关。
- 温度低于 0 °C 时无法运行机器。

其他危险

△ 危险

- 禁止在有爆炸危险的区域内运行本设备。
- 不要喷射含危害健康物质（如石棉）的物品。
- 不得喷射可燃液体。
- 决不使用设备抽吸具有溶媒性质的液体或未经稀释的酸和溶剂！此外还有汽油、颜料稀释剂或燃油等。极度易燃、易爆且有有毒的喷雾。不使用丙酮、未经稀释的酸和溶剂，因为它们会侵蚀设备上使用的材料。
- 让儿童远离包装薄膜，否则会有窒息危险！

△ 警告

- 根据有效的使用说明规定，该设备在没有系统分离器的情况下不能在饮用水网上使用。请确保您的家庭供水系统上运行高压清洁器的接口根据 EN 12729 的规定配备了合适的 BA 型系统分离器。
- 流经系统分离器的水不再视为饮用水。
- 高压软管、水龙头和连接器对机器安全十分重要。只能使用生产商推荐的高压软管、水龙头和连接器。
- 分离进水管或高压软管时，在此操作后热水可能从接口中流出。

△ 小心

- 为了避免事故和伤害，选择存放地点和运输时要考虑到设备的重量（参见技术参数）。

使用清洁剂的清洗作业

△ 警告

- 本设备只能使用制造商提供或推荐的洗涤剂。使用其他的洗涤剂或化学试剂会影响设备的安全性。
- 错误使用洗涤剂可能会导致重伤或中毒。
- 洗涤剂应远离孩童妥善保管。

安全装置

△ 小心

- 安全装置用于保护使用者，不得更改或不让其发挥功能。

设备开关

设备开关是为了防止设备误启动。

安全制动装置

水枪枪柄上的安全制动装置可防止设备被误启动。

带压力开关的溢流阀

溢流阀阻碍压力超过允许的工作压力。当松开手持喷枪的控制杆，压力开关关闭泵，高压喷射停止。拉上该杆，泵又被开启。

设备上的符号



高压喷头不得指向人、动物、带电电气设备或设备本身。
设备防寒保护。



本设备不允许直接连接到公共饮用水网。

个人防护装备

△ 小心

- 请穿戴合适的防护服和防护镜，以防止使用时从被清洁物体表面溅出的水渍或污渍。
- 使用高压清洁剂期间可能产生气溶胶。吸入气溶胶可能导致损害健康的后果。
 - 根据应用情况，可以使用完全封闭的吸嘴（例如表面洗涤剂）用于高压清洁，将明显减少含水气溶胶的产生。
 - 这种屏蔽并非适用于所有应用情况。
 - 当无法使用完全封闭的吸嘴时，根据待清洁的环境，应使用等级 FFP 2 或类似的口罩。

合乎规定的使用

本高压清洁剂只限私人居家日用。

- 使用高压喷水清洁机器、汽车、建筑物、工具、墙面、露台、园林工具等（需要时加清洁剂）。
- 使用经 KÄRCHER 许可的附件、备件以及洗涤剂。注意清洁剂随附的提示。

环境保护

内部材料提示 (REACH)

最新的内部材料信息请您在如下链接中查找：

www.kaercher.com/REACH



包装材料可以回收利用。请按照环保要求处理包装。



旧的设备中含有宝贵的可再利用的材料，应加以利用。请按照环保要求清理旧设备。

电气和电子设备通常包含使用不当或错误处理时可能对人身健康和环境带来潜在危险的组成部分。然而这些组成部分是设备正常运行所必需的。使用该符号标记的设备不得与生活垃圾一起处理。



产生含油废水的清洗工作，如清洗发动机和地坑，只允许在配有油分离器的清洗场所对其进行清洗。



只允许在与排污系统相连的不渗透的工作台上，使用洗涤剂执行作业。不要将洗涤剂排放到河道或土壤中。

装配

使用设备前，请按图示将部件组装好。

插图参见第 3 页折叠页

图 A

→ 固定手提柄。

图 B

→ 将耦合单元拧到机器的水接头上。

图 C

→ 将随附的花园软管接头紧固至您的花园软管的末端。

图 D

→ 将高压软管的夹子从手持喷枪上取出。

图 E

→ 将高压软管与喷枪连接。

→ 卡入管夹直至稳固。拉高压软管以检查是否安全连接。

调试设备

→ 将设备置放在平坦地面上。

图 F

→ 将高压软管连接至设备高压软管部位。

→ 插上电源插头。

供水

关于连接值，请参见铭牌 / 产品参数。

注意

水中的污物可能损坏高压泵和附件。为此建议使用 KÄRCHER 水过滤器（特殊附件，订货号 4.730-059）进行保护。

主要水源

注意

请遵从与供水相关的法规。

图 G

→ 将进水软管插到水管接口的联轴器上。

→ 将进水软管连接到供水管上。

→ 完全打开水龙头。

开放式容器供水

提示：最大的抽吸高度为 0.5 m。

→ 将吸入软管拧紧到设备水接头上并挂在水源（例如雨水桶）上。

运行前对设备进行通风。

→ 将设备设定为“I/ON”。

→ 释放喷枪上的安全装置。

→ 握紧扳手启动设备。

→ 运行设备（最多 2 分钟），直到手持喷枪上的水没有水泡出现。

→ 松开水枪扳手。

→ 推上喷枪上的安全装置。

设备运作

△ **小心**

干运转 2 分钟以上会导致高压泵损坏。设备 2 分钟内没有压力形成，关闭设备并按照“故障帮助”一章内的提示进行操作。

高压运作

△ **小心**

洗涂漆表面时至少与水柱保持 30 厘米距离，以避免损坏。

图 H

→ 将喷头置入喷枪后成 90° 旋转固定。

→ 将设备设定为“I/ON”。

→ 释放喷枪上的安全装置。

→ 握紧扳手启动设备。

注意：松开水枪扳手停止设备。高压残留于系统内。

使用洗涤剂的运行

提示：清洁剂只能在低压下混合。

△ **危险**

使用洗涤剂时，请注意洗涤剂制造商的安全数据表，尤其是有关个人防护装备的提示。

图 I

→ 自机壳内拉出所需长度的洗涤剂吸取软管。

→ 将清洁剂抽吸软管的一头放入盛有清洗剂瓶中。

图 J

→ 自喷枪分离喷头。仅用喷枪运作。

注意：由此，使用时清洗剂溶解物混入喷出的水柱之中。

泡沫喷头

从容器中抽吸洗涤剂并形成有效的洗涤剂泡沫。

图 K

→ 把洗涤剂溶解物装入泡沫喷头的洗涤剂容器（注意洗涤剂瓶上的剂量说明）。

→ 将泡沫喷头与洗涤剂容器连接。

→ 将泡沫喷头插入手持喷枪并旋转 90° 以固定。

注意：由此，使用时清洗剂溶解物混入喷出的水柱之中。

推荐的清洗方法

- 在干燥的表面上少量喷射清洁剂，让清洁剂在表面发生反应，但不要使之变干。
- 利用高压喷射方式刷洗被溶解的杂质。

使用洗涤剂运行后

- 用洗涤剂作业后：设备开动约 1 分钟直至冲洗干净。

中断设备操作

- 松开水枪扳手。
- 推上喷枪上的安全装置。
- 如，长时间（5 分钟以上）运作中断时，将设备开关设定为“0/OFF”。

结束设备操作

△ 小心

当系统中无可用压力，就要把高压软管从手持喷枪或设备上拆下来。

- 松开水枪扳手。
- 将设备设定为关闭“0/OFF”。
- 电源插头从插座上拔出。
- 关闭水龙头。
- 按压水枪扳手以除去在设备系统中残留的压力。
- 推上喷枪上的安全装置。
- 自供水处分离设备。

运输

△ 小心

受伤和损坏危险！

运输时要注意设备的重量。

手动搬运

- 握住手柄拉高并提起设备。

车辆运输

- 确保设备不会滑倒和倾覆。

储存

△ 小心

受伤和损坏危险！

存放时要注意设备的重量。

设备储存

- 设备置放在平坦地面上。
- 维护喷射管时锁紧喷射管。
- 将喷枪插入附件插槽内。
- 妥善保管电源线、高压软管及其它配件等。

长期存放之前，如在冬季特别要注意维护一章的提示。

防霜冻

注意

霜冻会损坏未完全清空的清洁器和附件。

完全清空设备和附件，防止霜冻损害。

避免损害：

- 完全排空设备内的水：打开不带高压软管和供水连接装置的设备（最多 1 分钟），等待直至无水从高压连接部位出来时。关闭设备。
- 机器及所有附件应在防霜的室内保管。

保养与维护

△ 危险

电击危险。

- 在对机器进行任何操作之前，请务必先关闭设备并将插头从电源上拔下。

清洗水接口的滤网

定期清洗水接口的滤网。

注意

不允许损坏滤网。

- 从水接口上拆下联轴器。

图 4

- 用平嘴钳取出滤网。
- 把滤网放在自来水下清洗。
- 重新将滤网装入水接口。

清洁洗涤剂过滤器

- 取下清洁剂抽吸软管中的滤网并用流动的自来水清洗。

故障排除

通过下面的简介，您可以纠正小的故障。

如有疑问，请联系 KÄRCHER 公司授权的客户服务中心。

⚠ 危险

电击危险。

→ 在对机器进行任何操作之前，请务必先关闭设备并将插头从电源上拔下。

设备不运作

- 拉动手持喷枪的控制杆，设备接通。
- 检查电源电压必须跟型号标识上给出的电压一致。
- 检查电源线是否损伤。

设备压力不足

- 设备排气：拆开高压软管，打开设备让其运行（最多 2 分钟），直至流出高压接口的水没有气泡产生。关闭设备并重新连接上高压软管。
- 检查供水连接系统。
- 用尖嘴钳取下水接头中的滤网并用流动的自来水清洗。

巨大的压力变化

- 高压清洗：用针除去喷头孔处的杂物，再用水清洗。
- 检查供水连接系统。

设备漏水

- 在技术方面可能存在高压泵少许漏水的情况。漏水量较大时请联系本公司认可的客户服务中心。

无法吸取清洁剂

- 自喷枪分离喷头。仅用喷枪运作。
- 清洗清洁剂抽吸软管的滤网。
- 检查清洁剂抽吸软管是否扭结。

附件和备件

只使用原厂配件和备件，它们能保证设备的安全和无故障运行。

有关配件和备件的信息请登录 www.kaercher.com。

产品规格 / 参数

电气连接

电压	220-240 V
	1~50-60 Hz

消耗电流	6 A
------	-----

保护程度	IP X5
------	-------

保护等级	II □
------	------

水接口

供水（最大）	1, 2 MPa
--------	----------

进水温度（最高）	40 ° C
----------	--------

流量（最小）	8 升 / 分
--------	---------

功率参数

工作压力	7, 4 MPa
------	----------

最大允许压力	11 MPa
--------	--------

水流消耗	5, 5 升 / 分
------	------------

最大流速	6, 0 升 / 分
------	------------

清洁剂剂消耗	0, 3 升 / 分
--------	------------

最大吸取	0, 5 m
------	--------

后挫力	11 N
-----	------

尺寸和重量

长度	279 毫米
----	--------

宽度	177 毫米
----	--------

高度	443 毫米
----	--------

重量	4, 2 千克
----	---------

技术参数可能会有变化。

保修卡

尊敬的用户：

非常感谢您选用 Kärcher 公司产品，我们愿竭力为您提供优质的服务。《保修卡》是保修产品的重要凭证，请您仔细填写此卡并妥善保存。如产品需要维修时，请提供此保修卡和发票原件。

购买日期：_____ 产品型号：_____

用户电话：_____ 产品序列号：_____

用户地址：_____ 经销商盖章：_____

服务热线：400-880-1060

服务邮箱：service@karcher.cn

官网地址：www.karcher.cn



扫一扫
关注官方微信



扫一扫获取
更多服务商信息

KÄRCHER

makes a difference

《保修卡》涂改无效，遗失不补。

保修条款

本条款所属内容是依据《中华人民共和国消费者权益保护法》、《中华人民共和国产品质量法》及其它相关规定编写，仅适用于Kärcher公司在中国大陆销售的家用系列产品。

为了维护您的合法权益，请在购机时索要发票（即财税部门统一监制的发票）及相关凭证。

1. 本产品在正确使用、操作的情况下，如产品确实存在由于材料、设计和制造引起的质量问题，本公司提供保修，自购机之日起，保修期为12个月。
2. 用户申请保修服务时，需携带有效发票原件及保修卡原件，将产品及原装附件一起送至Kärcher授权服务点进行保修。
3. 如果下述任何一种情况发生，消费者将不能享受保修服务（即本保修条款不予适用），但可享受Kärcher公司授权之服务点提供的有偿服务：
 - 1) 超过保修有效期的；
 - 2) 无有效发票原件或保修凭证的，或保修凭证（或发票）与产品实物不符，或保修凭证（或发票）经涂改的；
 - 3) 非按产品使用说明书要求使用、维护、保养产品而造成损坏的；
 - 4) 产品的自然磨损及易损易耗件（包括但不限于外壳、高压管、密封件、喷枪、喷嘴、单向阀、柱塞、吸尘管、刷子、扒头、过滤器、尘袋、传动皮带、齿轮、电池等）；
 - 5) 产品售出后由于运输或搬运造成损坏的；
 - 6) 未经Kärcher公司同意而对产品自行拆卸或自行修理而造成损坏的；
 - 7) 因电压、水源、使用环境不当而导致故障的；
 - 8) 因使用不正确的清洁介质而造成故障的；
 - 9) 由于不可抗力等自然因素造成故障的；
 - 10) 一切未经Kärcher公司许可对产品进行改造的；
 - 11) 产品无原厂标识，或原厂标识上的订货号、序列号与Kärcher公司所提供的产品订货号、序列号不一致的；
 - 12) 其它因用户原因造成产品故障的。
4. Kärcher公司的家用产品只适用于家庭用途，凡用于非家庭场所，如商用或工业用途等的，将不能享受免费保修服务。
5. 往返Kärcher授权服务点的一切费用由用户自行承担（销售时，经销商有另外承诺的除外），家用系列产品不提供免费上门服务。
6. 保修期内，所有因维修被替换下来的零件、部件和附件等归Kärcher公司所有。
7. 保修期内，如所维修的部件已停产或淘汰，Kärcher公司有权使用同档次或更高档次的产品进行替换。
8. Kärcher公司对产品的保修义务，无论本保修条款或其它书面说明可能隐含或默认的保修义务，都应当被理解为已经包含在本保修条款所列的保修范围和保修期限内。
9. 保修期内，用户按本保修条款享受保修服务，此为因产品缺陷所受损失的唯一补救措施；换言之，Kärcher公司对用户的其它直接或间接损失（包括但不限于数据的丢失、期待的利益等）不承担任何责任。
10. Kärcher公司的经销商或其代理人以及Kärcher公司授权的服务点均无权代表Kärcher公司承担超出本保修条款范畴的义务，亦无权放弃Kärcher公司在本保修条款下的任何权力。
11. 中国有关法律的强制性规定适用于本保修条款。
12. Kärcher公司保留调整有关保修信息、产品功能及规范等的权利，恕不另行通知。

凯驰（上海）清洁系统有限公司
2016年08月16日

Contents

Description of the Appliance	13
Safety instructions	13
Proper use	16
Environmental protection	16
Assembly	17
Start up	17
Operation	17
Transport	18
Storage	19
Care and maintenance	19
Troubleshooting	19
Accessories and Spare Parts	20
Technical specifications	20
Warranty	20

Description of the Appliance

In the event of missing accessories or any transport damage, please contact your dealer.

See fold-out page 4 for illustrations

- 1 High pressure connection
- 2 Appliance switch „0/OFF“ / „I/ON“
- 3 Storage hook for high pressure hose and mains connection cable
- 4 Carrying handle
- 5 Storage for spray lance
- 6 Storage for trigger gun
- 7 Water connection with integrated sieve
- 8 Detergent suction hose (with sieve)
- 9 Adapter
- 10 Hose coupling
- 11 Water supply hose
- 12 Hose coupling (Aquistop)
- 13 Coupling element for water connection
- 14 Suction hose
- 15 Mains cable with mains plug
- 16 Trigger gun
- 17 Lock trigger gun
- 18 Clamp for high pressure hose
- 19 High pressure hose
- 20 Spray lance with high pressure nozzle
For normal cleaning tasks.
- 21 Spray lance with Dirtblaster
For strong contaminations.
- 22 Foam nozzle with detergent container

Safety instructions



Please read and comply with these original instructions prior to the initial operation of your appliance and store them for later use or subsequent owners.

Apart from the notes contained herein the general safety provisions and rules for the prevention of accidents of the legislator must be observed.

Warnings and notes that are attached on the appliance provide important notes for the safe operation.

Hazard levels

△ DANGER

Pointer to immediate danger, which leads to severe injuries or death.

△ WARNING

Pointer to a possibly dangerous situation, which can lead to severe injuries or death.

△ CAUTION

Pointer to a possibly dangerous situation, which can lead to minor injuries.

ATTENTION

Pointer to a possibly dangerous situation, which can lead to property damage.

Electric components

△ DANGER

Risk of electric shock.

- *Never touch the mains plug and the socket with wet hands.*
- *Check the power cord with mains plug for damage prior to every use. Immediately have damaged power cord replaced by an authorised customer service / electrician. Do not operate an appliance if the power cord is damaged.*
- *All current-conducting parts in the working area must be protected against jet water.*
- *The mains plug and the coupling of an extension cable must be watertight and must never lie in water. Moreover, the coupling may never lie on the ground. The use of cable reels that ensure that*

the sockets are at least 60 mm above the ground is recommended.

- Make sure that the power cord or extension cable is not damaged by running over, pinching, dragging or the like. Protect the power cords from heat, oil, and sharp edges.
- Turn off the appliance and remove the mains plug prior to any care and maintenance works.
- Repair work and work on the electrical components may only be performed by an authorised customer service.

⚠ WARNING

- The appliance may only be connected to an electric supply that has been installed by an electrician in accordance with IEC 60364.
- The appliance may only be connected to alternating current. The voltage must correspond with the type plate of the appliance.
- For safety reasons, we recommend that you operate the appliance only via a residual current device (max. 30 mA).
- An unsuitable electrical extension cable can be hazardous. Only use an electrical extension cable which has been approved and labelled for this purpose and has an adequate cable cross-section outdoors: 1 - 10 m: 1.5 mm²; 10 - 30 m: 2.5 mm²
- Always fully unreel the extension cable from the cable drum.

Safe handling

⚠ DANGER

- The user must use the appliance as intended. The person must consider the local conditions and must pay attention to other persons in the vicinity when working with the appliance.
- Check important components, such as high-pressure hose, hand spray gun and safety installations, for damage prior to every operation. Immediately replace damaged components. Do not operate appliance with damaged components.

- High-pressure jets can be dangerous if improperly used. The jet may not be directed at persons, animals, live electrical equipment or at the appliance itself.
- The high-pressure jet must not be directed at other persons or the user himself/herself to clean clothing or footwear.
- Vehicle tyres/tyre valves are susceptible to damage from the high-pressure jet and may burst. The first indication for this is a discolouration of the tyre. Damaged vehicle tyres/tyre valves are perilous. Keep a minimum jet distance of 30 cm during cleaning!

⚠ WARNING

- Do not use the appliance when there are other persons around unless they are also wearing protective clothing.
- The appliance must not be operated by children or persons who have not been instructed accordingly.
- This appliance is not intended for use by persons with limited physical, sensory or mental capacities or lacking experience and/or skills, unless such persons are accompanied and supervised by a person in charge of their safety or they have received precise instructions on the use of this appliance and have understood the resulting risks.
- Children must not play with this appliance.
- Supervise children to prevent them from playing with the appliance.

⚠ CAUTION

- Create stability for the appliance prior to any work on or with the appliance to prevent accidents or damage.
- The water jet that is emitted from the high-pressure nozzle results in a repulsion power acting on the hand spray gun. Make sure that you have a firm footing and are also holding the hand spray gun and spray lance firmly.
- Never leave the appliance unattended as long as it is in operation.

ATTENTION

- In case of extended breaks, switch off the appliance at the appliance switch.
- Do not operate the appliance at temperatures below 0 °C.

Other risks

⚠ DANGER

- The appliance may not be operated in explosive atmospheres.
- Never use the appliance to clean objects containing hazardous substances (e.g. asbestos).
- Do not spray flammable liquids.
- Never draw in fluids containing solvents or undiluted acids and solvents! This includes petrol, paint thinner and heating oil. The spray mist is highly inflammable, explosive and poisonous. Do not use acetone, undiluted acids and solvents, as they corrode the materials used on the appliance.
- Keep packaging films away from children, there is a risk of suffocation!

⚠ WARNING

- According to applicable regulations, the appliance must never be used on the drinking water net without a system separator. Ensure that the connection of your building water installation on which the high-pressure cleaner is operated is equipped with a system separator pursuant to EN 12729 Type BA.
- Water that has flown through a system separator is no longer classified as drinking water.
- High-pressure hoses, fixtures and couplings are important for the safety of the appliance. Only use high-pressure hoses, fixtures and couplings recommended by the manufacturer.
- When disconnecting the supply or high pressure hose, hot water may leak from the connections after operation.

⚠ CAUTION

- Mind the weight of the appliance when selecting the storage location and during transport (see technical data) to prevent accidents or injuries.

Working with detergent

⚠ WARNING

- This appliance was designed to be used with detergents which are supplied or recommended by the manufacturer. The use of other detergents or chemicals may compromise the safety of the appliance.
- The improper use of detergents can cause severe injuries or toxication.
- Store detergents away from the reach of children.

Safety Devices

⚠ CAUTION

- Safety installations serve the protection of the user and may not be modified or bypassed.

Appliance switch

The appliance switch prevents unintentional operation of the appliance.

Lock trigger gun

This lock locks the lever of the trigger gun and prevents the inadvertent start of the appliance.

Overflow valve with pressure switch

The overflow valve prevents the permissible working pressure from being exceeded. If the lever on the trigger gun is released the pressure switch turns off the pump, the high pressure jet is stopped. If the lever is pulled the pump is turned on again.

Symbols on the machine



The high pressure jet must not be directed at persons, animals, live electrical equipment or at the appliance itself.
Protect the appliance against frost.



The appliance must not be directly connected to the public drinking water network.

Personal protective equipment

CAUTION

- *Wear protective clothing and safety goggles to protect against splash back containing water or dirt.*
- *During the use of high-pressure cleaners aerosols can develop. Inhaling aerosols can cause health damage.*
- *Depending on the application, completely shielded nozzles (e.g. surface cleaner) that significantly reduce the emission of aqueous aerosols can be used for high-pressure cleaning.*
- *The use of such shielding is not possible with all applications.*
- *If the use of a completely shielded nozzle is not possible, a respirator of the category FFP 2 or the like should be used, depending on the environment to be cleaned.*

Proper use

This high pressure cleaner is designed for domestic use only.

- for cleaning machines, vehicles, buildings, tools, facades, terraces, gardening tools, etc. by means of a high-pressure water jet (if necessary, with additional cleaning agents).
- with accessories, replacement parts and cleaning agents approved by KÄRCHER. Please observe the information accompanying the cleaning agents.

Environmental protection

Notes about the ingredients (REACH)

You will find current information about the ingredients at:

www.kaercher.com/REACH



The packaging material can be recycled. Please arrange for the environmentally appropriate disposal of the packaging.



Old appliances contain valuable recyclable materials that should be recycled properly. Please arrange for the environmentally appropriate disposal of the old devices.

Electrical and electronic devices often contain components which could potentially pose a danger to human health and the environment if handled or disposed of incorrectly. However, these components are necessary for the proper operation of the device. Devices marked with this symbol must not be disposed of with regular household rubbish.



Cleaning operations which produce oily waste water, e.g. engine washes, underbody washes, may only be carried out using washing stations equipped with an oil separator.



Work with detergents must only be performed on liquid-tight work surfaces with a connection to the sewer system. Do not let release detergent into waters or earth.

Assembly

Mount loose parts delivered with appliance prior to start-up.

See fold-out page 3 for illustrations

Illustration **A**

→ Attach the carrying handle.

Illustration **B**

→ Screw the coupling element to the water connection on the appliance.

Illustration **C**

→ Screw the supplied hose coupling on to the end of your water supply hose.

Illustration **D**

→ Pull out the clamp for the high pressure hose from the trigger gun.

Illustration **E**

→ Connect high pressure hose to trigger gun.

→ Push the clamp in until it locks. Check the secure connection by pulling on the high-pressure hose.

Start up

→ Park the appliance on an even surface.

Illustration **F**

→ Connect the high pressure hose to the high pressure connection of the appliance.

→ Insert the mains plug into the socket.

Water supply

For connection values, see type plate/technical data.

ATTENTION

Impurities in the water can damage the high-pressure pump and the accessories. For protection, the use of the KÄRCHER water filter (optional accessory, order no. 4.730-059) is recommended.

Water supply from mains

ATTENTION

Observe regulations of water supplier.

Illustration **G**

→ Attach the water supply hose to the coupling on the water connection.

→ Connect the water supply hose to the water supply.

→ Completely open the water tap.

Drawing in water from open reservoirs

Note: The max. suction height is 0.5 m.

→ Screw the suction hose into the water connection of the appliance and insert it into the water source (e.g. rainwater drum).

Remove air from appliance before operation.

→ Turn on the appliance "I/ON".

→ Unlock the lever on the trigger gun.

→ Pull on the lever of the trigger gun; the device will switch on.

→ Let the appliance work until the water exits at the hand spray gun without bubbles (max. 2 minutes).

→ Release the lever on the trigger gun.

→ Lock the lever on the trigger gun.

Operation

⚠ CAUTION

Dry running of more than 2 minutes leads to damage of the high-pressure pump. If the appliance does not build up pressure within 2 minutes, switch the appliance off and proceed in accordance with the instructions in Chapter "Troubleshooting".

High pressure operation

⚠ CAUTION

Keep a distance of at least 30 cm when using the jet for cleaning painted surfaces to avoid damage.

Illustration **H**

→ Push the spray lance into the trigger gun and fasten it by turning it through 90°.

→ Turn on the appliance "I/ON".

→ Unlock the lever on the trigger gun.

→ Pull on the lever of the trigger gun; the device will switch on.

Note: Release the lever of the trigger gun; the device will switch off again. High pressure remains in the system.

Operation with detergent

Note: Detergent can only be added when the device is operated in low pressure mode.

⚠ DANGER

When using detergents, the material data safety sheet issued by the detergent manufacturer must be adhered to, especially the instructions regarding personal protective equipment.

Illustration **I**

- Pull detergent suction hose as far as is required out of the housing.
- Suspend end of detergent suction hose in a container filled with detergent.

Illustration **J**

- Detach spray lance from the trigger gun. Work only with the trigger gun.

Note: This will mix the detergent with the water stream.

Foam nozzle

With powerful foam for effortless cleaning.

Illustration **K**

- Fill the detergent solution in the detergent tank of the foam nozzle (observe dosage instructions on the packaging of the detergent).
- Connect the detergent tank to the foam nozzle.
- Connect the foam nozzle to the trigger gun.

Note: This will mix the detergent with the water stream.

Recommended cleaning method

- Spray the detergent sparingly on the dry surface and allow it to react, but not to dry.
- Spray off loosened dirt with the high pressure jet.

After operation with detergent

- After operation with detergent: Run the machine for approximately 1 minute for a clear rinse.

Interrupting operation

- Release the lever on the trigger gun.
- Lock the lever on the trigger gun.
- During longer breaks (more than 5 minutes), also turn the appliance off using the "0/OFF" switch.

Finish operation

⚠ CAUTION

Only separate the high-pressure hose from the trigger gun or the appliance when there is no pressure in the system.

- Release the lever on the trigger gun.
- Turn off the appliance "0/OFF".
- Disconnect the mains plug from the socket.
- Turn off tap.
- Press the lever on the trigger gun to release any remaining pressure in the system.
- Lock the lever on the trigger gun.
- Detach the appliance from the water supply.

Transport

⚠ CAUTION

*Risk of personal injury or damage!
Mind the weight of the appliance during transport.*

When transporting by hand

- Lift appliance by the carrying handle and carry it.

When transporting in vehicles

- Secure the appliance against shifting and tipping over.

Storage

⚠ CAUTION

*Risk of personal injury or damage!
Consider the weight of the appliance when storing it.*

Storing the Appliance

- Park the machine on an even surface.
- Engage the spray lance in its holder.
- Insert the trigger gun in its holder.
- Stow away the mains cable, the high-pressure hose and accessory on the appliance.

Prior to extended storage periods, as during the winter, also observe the instructions in the Care section.

Frost protection

ATTENTION

Appliances and accessories that are not completely drained can be destroyed by frost. Completely drain appliance and accessories and protect them against frost.

To avoid damage:

- Completely drain all water from the appliance: Switch the appliance on with detached high pressure hose and detached water supply (max. 1 minute) and wait, until no more water exits at the high pressure connection. Turn off the appliance.
- Store the appliance and the entire accessories in a frost free room.

Care and maintenance

⚠ DANGER

Risk of electric shock.

- Prior to all work on the appliance, switch off the appliance and pull the power plug.


Clean the sieve in the water connection

Clean the sieve in the water connection regularly.

ATTENTION

The sieve must not be damaged.

- Remove coupling from the water connection.

Illustration 

- Pull the sieve out using flat pliers.
- Clean the sieve under running water.
- Reinsert the sieve into the water connection.

Cleaning the detergent filter

- Remove filter from suction hose for detergent and clean under running water.

Troubleshooting

You can rectify minor faults yourself with the help of the following overview.

If in doubt, please consult the authorized customer service.

⚠ DANGER

Risk of electric shock.

- Prior to all work on the appliance, switch off the appliance and pull the power plug.

Appliance is not running

- Pull on the lever of the trigger gun; the device will switch on.
- Check whether the voltage indicated on the type plate corresponds to the voltage of the mains supply.
- Check the mains connection cable for damages.

Pressure does not build up in the appliance

- Appliance ventilation: Switch the appliance on with the high-pressure hose detached and operate (max. 2 minutes) until the water exits the high-pressure connection without bubbles. Switch off appliance and reconnect high-pressure hose.
- Check the water supply.
- Pull out the sieve in the water connection using flat-nose pliers and clean under running water.

Strong pressure fluctuations

- Clean high-pressure nozzle: Remove dirt and debris from the nozzle bore, using a needle and rinse through with water from the front.
- Check water flow quantity.

Appliance is leaking

- Slight leakage from the appliance pump is normal. If the leakage increases contact the authorized customer service.

No detergent infeed

- Detach spray lance from the trigger gun. Work only with the trigger gun.
- Clean the detergent suction hose filter.
- Check the detergent suction hose for kinks.

Accessories and Spare Parts

Only use original accessories and spare parts, they ensure the safe and trouble-free operation of the device.

For information about accessories and spare parts, please visit www.kaercher.com.

Technical specifications

Electrical connection

Voltage	220-240 V 1~50-60 Hz
---------	-------------------------

Power consumption	6 A
-------------------	-----

Protection class	IP X5
------------------	-------

Protective class	II 
------------------	--

Water connection

Max. feed pressure	1,2 MPa
--------------------	---------

Max. feed temperature	40 °C
-----------------------	-------

Min. feed volume	8 l/min
------------------	---------

Performance data

Working pressure	7,4 MPa
------------------	---------

Max. permissible pressure	11 MPa
---------------------------	--------

Water flow rate	5,5 l/min
-----------------	-----------

Max. flow rate	6,0 l/min
----------------	-----------

Detergent flow rate	0,3 l/min
---------------------	-----------

Max. Suction height	0,5 m
---------------------	-------

Recoil force of trigger gun	11 N
-----------------------------	------

Dimensions and weights

Length	279 mm
--------	--------

Width	177 mm
-------	--------

Height	443 mm
--------	--------

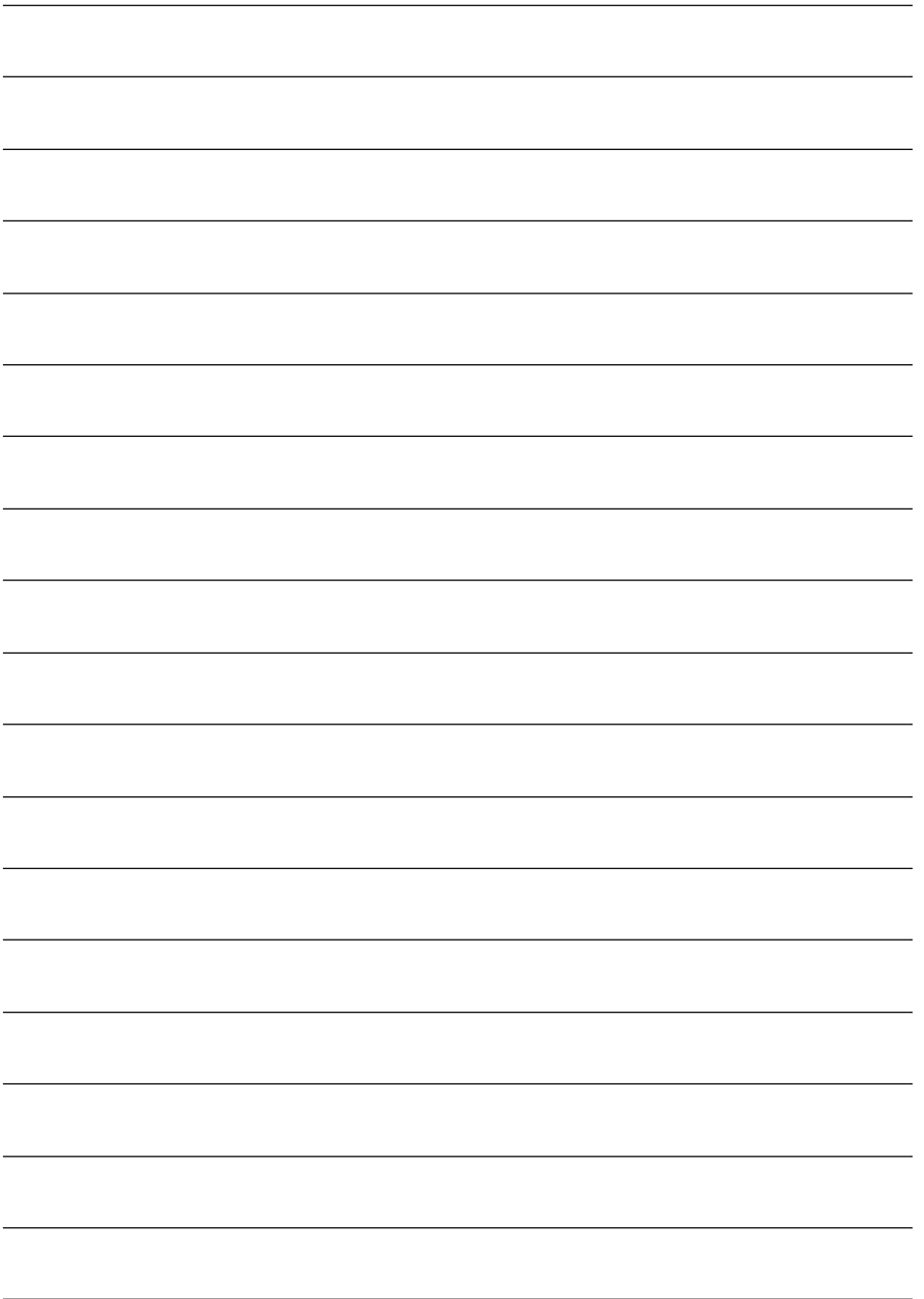
Weight	4,2 kg
--------	--------

Subject to technical changes.

Warranty

The warranty terms published by the relevant sales company are applicable in each country. We will repair potential failures of your appliance within the warranty period free of charge, provided that such failure is caused by faulty material or defects in manufacturing. In the event of a warranty claim please contact your dealer or the nearest authorized Customer Service centre. Please submit the proof of purchase. Addresses can be found under:

www.kaercher.com/dealersearch





www.kaercher.com/service

Alfred Kärcher SE & Co. KG
Alfred-Kärcher-Str. 28-40
71364 Winnenden (Germany)
Tel.: +49 7195 14-0
Fax: +49 7195 14-2212

