

# KÄRCHER

makes a difference

K 1 Battery  
K 1 Battery Lite

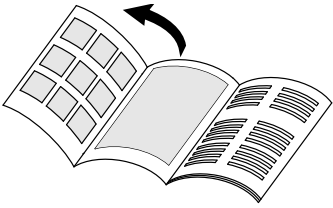
中文 .....5  
English.....12

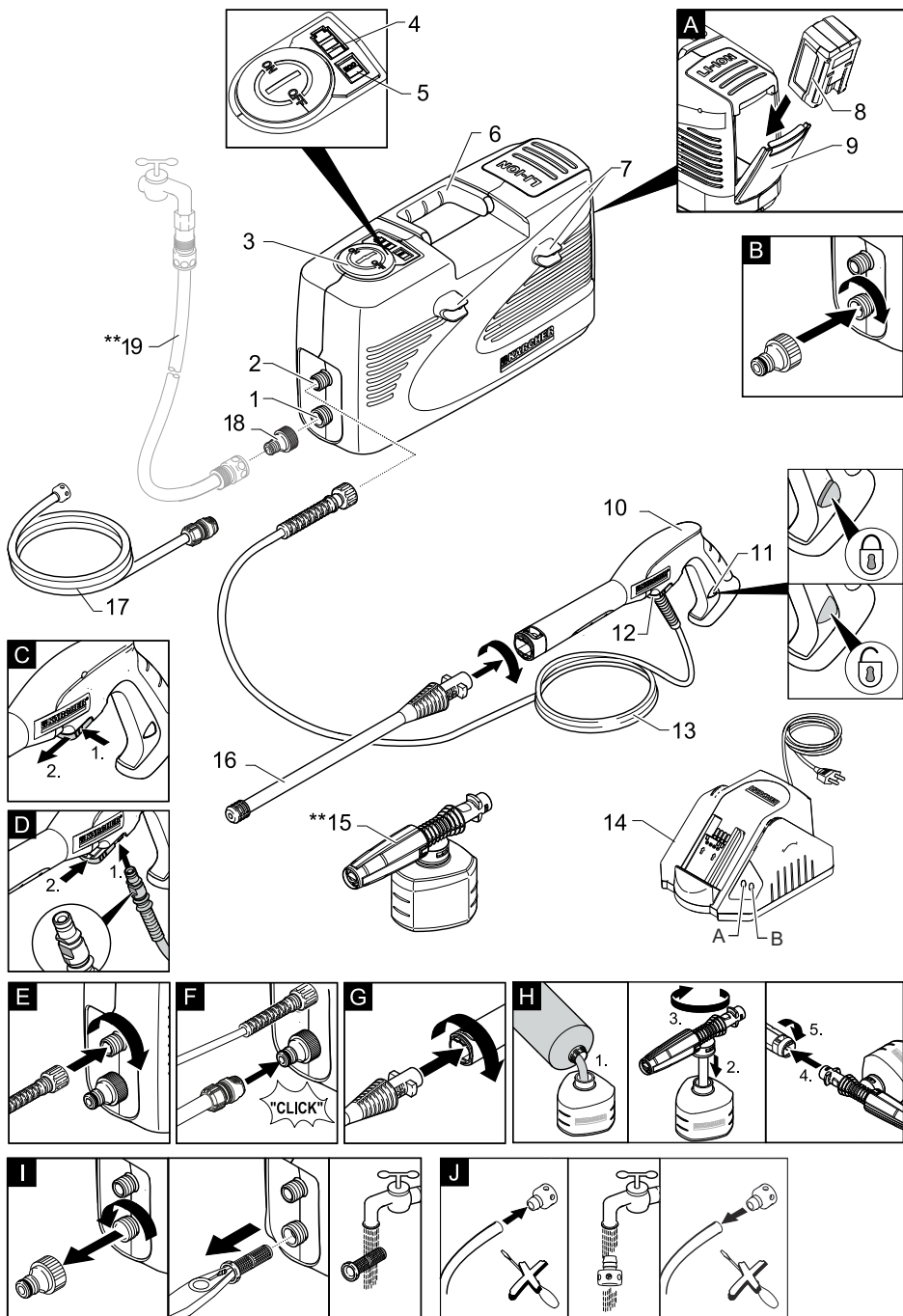


未阅读该说明书前严禁使用该设备



97625940 (06/17)







## 目录

目录 . . . . .	5
供货范围 . . . . .	5
合乎规定的使用 . . . . .	5
环境保护 . . . . .	5
安全说明 . . . . .	5
设备说明 . . . . .	8
装配 . . . . .	8
调试设备 . . . . .	8
设备运作 . . . . .	9
运输 . . . . .	10
储存 . . . . .	10
保养与维护 . . . . .	10
故障排除 . . . . .	10
附件和备件 . . . . .	11
质量保证 . . . . .	11
产品规格 / 参数 . . . . .	11



在您初次使用本产品前，请仔细阅读本说明书，并请妥善保存以便日后查阅。

## 供货范围

设备的供货范围都已印制在包装上。因此，打开包装时请检查产品是否齐全。如有附件缺失或在运输过程中损坏，请联系经销商。

## 合乎规定的使用

本高压清洁剂只限私人居家日用。

- 使用高压喷水清洁机器、汽车、建筑物、工具、墙面、露台、园林工具等（需要时加清洁剂）。
- 使用经 KÄRCHER 许可的附件、备件以及洗涤剂。注意清洁剂随附的提示。

## 环境保护

### 内部材料提示 (REACH)

最新的内部材料信息请您在如下链接中查找：

[www.kaercher.com/REACH](http://www.kaercher.com/REACH)



包装材料可以回收利用。请按照环保要求处理包装。



旧的设备中含有宝贵的可再利用的材料，应加以利用。请按照环保要求清理旧设备。



产生含油废水的清洗工作，如清洗发动机和地坑，只允许在配有油分离器的清洗场所对其进行清洗。



只允许在与排污系统相连的不渗透的工作台上，使用洗涤剂执行作业。不要将洗涤剂排放到河道或土壤中。



在一些国家不允许从公共河道取水。

## 安全说明

除了操作说明书里的提示外，还要遵守立法的一般安全和事故防范规定。

设备上相应的警告、指示标志为无风险的运行提供重要提示。

### 危险程度

#### △ 危险

提示会导致人员重伤或死亡的直接威胁性危险。

#### △ 警告

提示可能导致人员重伤或死亡的危险状况。

#### △ 小心

提示可能导致轻度伤害的危险状况。

#### 注意

提示可能产生财产损失的危险状况。

### 设备上的符号



本设备不允许直接连接到公共饮用水网。



高压喷头不得指向人、动物、带电电气设备或设备本身。设备防寒保护。

## 安全处理

### △ 危险

- 用户必须按规定使用该设备。同时要重视地方现行的规定并在设备工作时照看好场所内的人员。
- 每次使用前检查重要部件，如高压软管、手持喷枪和安全装置是否是否有损。立即更换受损部件。不得使用带受损部件的设备。
- 高压喷枪使用不当，会带来危险。不能对准人、动物、电器设备或者设备自身喷射。
- 高压水柱不可对准自己或他人喷射以清洗衣服或鞋袜。
- 汽车轮胎 / 轮胎阀门可能被高压水柱冲坏并爆裂。对此损坏的首要征兆就是轮胎变色。受损的汽车轮胎 / 轮胎阀门可能带来生命危险。清洗时至少与水柱保持 30 cm 距离！
- 让儿童远离包装薄膜，否则会有窒息危险！

### △ 警告

- 如射程范围内有其他人，除非他们穿上防护服，否则不得使用本设备。
- 儿童或未经指导的人员都不准操作本设备。
- 本设备不得让那些身体能力有限、感官能力弱或理解能力差或者缺乏经验和 / 或缺乏知识的人员使用，除非他们有专人监督或接受专人指导如何操作设备并了解其可能产生的危险。
- 儿童不得玩要本设备。
- 照看好儿童，以确保他们不用设备玩耍。

### △ 小心

- 用设备或在设备上进行任何作业前要先确保设备的稳定性，以避免因设备翻倒而导致事故或故障发生。
- 通过高压喷嘴上喷出的水束而对手持式喷枪产生反冲力。注意保持安全可靠的状态，紧握高压喷枪和喷射管。
- 设备运行期间不可无人看管。

### 注意

- 若工休时间比较长，关闭设备开关。
- 温度低于 0 °C 时无法运行机器。

## 充电器

### △ 危险

- 电击危险。
- 决不能用湿手触及电源插头或者插座。
- 每次使用前检查充电器、电源电缆和电池组是否有损坏。切勿使用损坏的装置，受损的零部件只能由专家修理。定期检查补偿导线，并在损坏时加以更换。
- 切勿使用脏污或受潮的充电器。
- 切勿在易爆环境中使用充电器。
- 切勿通过手持电源电缆来携带充电器。
- 防止电源电缆受到高温、锐边、油污和机器的运转部件的影响。
- 避免使用带有复式插座的补偿导线以及多个设备的同时运行。
- 不要通过拉动电线将电源插头从插座上拔下。
- 切勿覆盖充电器并保持充电器的通风口通风。
- 禁止有金属部件与电池座接触，否则有短路的危险。
- 请勿打开充电器。修理工作只能由经授权的专家完成。
- 充电器只能用于为允许的蓄电池组充电。
- 只将清洁、干燥的电池组移动至充电器的电池座上。
- 切勿给电池（原电池）充电，否则有爆炸危险。
- 切勿给电池组持续充电超过 24 小时。

## 电池组

- 避免接触从残次的电池组中渗漏出的液体。如意外接触液体，请用水冲洗。如液体不慎溅入眼睛，请咨询医生。
- 切勿给受损的电池组充电。更换受损的电池组。
- 切勿将电池组和金属物体存放在一起，否则有短路的风险。
- 切勿使用脏污或受潮的电池组。
- 电源电压必须跟蓄电池充电器的型号标牌上给出的电压一致。
- 切勿对爆炸性环境中的电池组进行充电。
- 防止电池组受到高温、锐边、油污和运转单元部件的影响。

- 切勿在充电期间覆盖电池组并保持通风狭缝畅通。
- 禁止有金属部件与电池组的触点接触，否则有短路的危险。
- 切勿打开电池组。只能由经授权的专家来完成修理工作。
- 只用经认可的充电器来给电池组充电。
- 切勿将电池组抛入火中或将其归入生活垃圾中。

### 其他危险

#### ⚠ 危险

- 禁止在有爆炸危险的区域内运行本设备。
- 不要喷射含危害健康物质（如石棉）的物品。
- 不得喷射可燃液体。
- 决不使用设备抽吸具有溶媒性质的液体或未经稀释的酸和溶剂！此外还有汽油、颜料稀释剂或燃油等。极度易燃、易爆且有有毒的喷雾。不使用丙酮、未经稀释的酸和溶剂，因为它们会侵蚀设备上使用的材料。
- 让儿童远离包装薄膜，否则会有窒息危险！

#### ⚠ 警告

- 根据有效的使用说明规定，该设备在没有系统分离器的情况下不能在饮用水网上使用。请确保您的家庭供水系统上运行高压清洁器的接口根据 EN 12729 的规定配备了合适的 BA 型系统分离器。
- 流经系统分离器的水不再视为饮用水。
- 高压软管、水龙头和连接器对机器安全十分重要。只能使用生产商推荐的高压软管、水龙头和连接器。
- 分离进水管或高压软管时，在此操作后水可能从接口中流出。

#### ⚠ 小心

- 为了避免事故和伤害，选择存放地点和运输时要考虑到设备的重量（参见技术参数）。

### 使用清洁剂的清洗作业

#### ⚠ 警告

- 本设备只能使用制造商提供或推荐的洗涤剂。使用其他的洗涤剂或化学试剂会影响设备的安全性。
- 错误使用洗涤剂可能会导致重伤或中毒。
- 洗涤剂应远离孩童妥善保管。

### 个人防护装备

#### ⚠ 小心

- 请穿戴合适的防护服和防护镜，以防止使用时从被清洁物体表面溅出的水渍或污渍。
- 使用高压清洁器期间可能产生气溶胶。吸入气溶胶可能导致损害健康的后果。根据应用情况，可以使用完全封闭的吸嘴（例如表面洗涤剂）用于高压清洁，将明显减少含水气溶胶的产生。这种屏蔽并非适用于所有应用情况。当无法使用完全封闭的吸嘴时，根据待清洁的环境，应使用等级 FFP 2 或类似的口罩。

### 安全装置

#### ⚠ 小心

- 安全装置用于保护使用者，不得更改或不让其发挥功能。

### 设备开关

设备开关是为了防止设备误启动。

### 安全制动装置

水枪枪柄上的安全制动装置可防止设备被误启动。

### 带压力开关的溢流阀

溢流阀阻碍压力超过允许的工作压力。当松开手持喷枪的控制杆，压力开关关闭泵，高压喷射停止。拉上该杆，泵又被开启。

## 设备说明

### 图片参见第 2 页

- 1 带滤网的水接口
- 2 高压接口
- 3 开关“开启/关闭”/“节能”
- 4 电池充电指示器
- 5 节能模式指示灯
- 6 手柄
- 7 喷头存储架
- 8 电池组
- 9 蓄电池箱
- 10 手持喷枪
- 11 喷枪枪柄上的安全装置
- 12 高压软管夹
- 13 高压软管
- 14 充电器
  - A LED1
  - B LED2
- 16 高压喷枪杆
- 17 抽吸软管
- 18 管接头

### \*\* 不属于供货范围

- 15 带洗涤剂容器的泡沫喷头
- 19 进水软管  
使用一种织物纤维强化软管。  
长度至少 5 米。  
直径至少为 13 毫米 (1/2 英寸)。

## 特殊附属配件

特殊附属配件的使用可延长设备的使用寿命。详细事项请联系 KÄRCHER 公司或当地经销商。

## 装配

使用设备前，请按图示将部件组装好。

### 图片参见第 2 页

#### 图A

→ 将电池插入蓄电池箱。

#### 图B

→ 将耦合单元拧到机器的水接头上。

#### 图C

→ 将高压软管的夹子从手持喷枪上取出。

#### 图D

→ 将高压软管与喷枪连接。

→ 卡入管夹直至稳固。拉高压软管以检查是否安全连接。

**注：**电池在交付时已部分充电。在设备启动前对其进行充电，然后在需要时对其进行充电。请遵照电池充电器的说明。

## 调试设备

→ 将设备置放在平坦地面上。

#### 图E

→ 将高压软管连接至设备高压软管部位。

## 供水

根据相关法规，若没有系统分离器，不能使用该设备直接从饮水系统供水。请使用 KÄRCHER 公司制造的合适的系统分离器。或使用符合 EN12729 BA 的合适的系统分离器。



### 注意

水中的污物可能损坏高压泵和附件。为此建议使用 KÄRCHER 水过滤器（特殊附件，订货号 4.730-059）进行保护。

### 主要水源

关于连接值，请参见铭牌 / 产品参数。请遵从与供水相关的法规。

#### 图E

→ 将进水软管插到水管接口的联轴器上。

→ 将进水软管连接到供水管上。

→ 完全打开水龙头。

### 开放式容器供水

→ 将吸入软管拧紧到设备水接头上并挂在水源（例如雨水桶）上。

→ 从设备高压连接部位分离高压软管。

→ 接通设备“I/ON”并等待（最多 2 分钟），直至流出高压接口的水没有气泡产生。

→ 将设备设定为关闭“0/OFF”。



## 电池运行

- 将设备设定为“I/ON”。  
电池运行和电源运行的显示屏须执行简短的测试程序，并将持续亮起。
- 电池运行的显示屏持续亮起，并显示电池状态。  
设备已准备好运行。

显示电池运行		电池组的充电状态
绿色 LED	红色 LED	
3	0	70% - 100%
2	0	40% - 70%
1	0	20% - 40%
0	3 闪烁	10% - 20%
0	3	1% - 10%

- 电池用尽：电机将被关掉，三个红色的 LED 将长亮 1 分钟，然后设备将自行关闭。
- 发动机或电池组过热：设备将自行关闭。

## 给电池充电

- 将充电装置与电源线相连并插入电源插座中。
- 将电池组插入到充电器中。

	LED 1	LED 2
充电器中没有电池组。	熄灭	熄灭
低压保护	熄灭	闪烁
充电过程	闪烁	熄灭
完成充电过程	亮起	熄灭
温度过高	熄灭	亮起
短路	熄灭	亮起

## 设备运作

### 注意

干运转（不加润滑油）2 分钟以上会导致高压泵损坏。设备 2 分钟内没有压力形成，关闭设备并按照“故障帮助”一章内的提示进行操作。

## 运行方式

- 按压开关设备默认为全速模式。
- 再次按压开关切换到节能模式。
- 再次按压开关关闭设备。

## 高压运作

### △ 小心

洗涂漆表面时至少与水柱保持 30 厘米距离，以避免损坏。

### 图 G

- 将喷头置入喷枪后成 90° 旋转固定。
- 将设备设定为“I/ON”。
- 释放喷枪上的安全装置。
- 握紧扳手启动设备。  
**注意：**松开水枪扳手停止设备。高压残留在系统内。

## 使用洗涤剂的运行

### △ 危险

使用洗涤剂时，请注意洗涤剂制造商的安全数据表，尤其是有关个人防护装备的提示。

### 图 H

- 把洗涤剂溶解物装入泡沫喷头的洗涤剂容器（注意洗涤剂瓶上的剂量说明）。
- 将泡沫喷头与洗涤剂容器连接。
- 将泡沫喷头插入手持喷枪并旋转 90° 以固定。

## 推荐的清洗方法

- 在干燥的表面上少量喷射清洁剂，让清洁剂在表面发生反应，但不要使之变干。
- 利用高压喷射方式刷洗被溶解的杂质。

## 中断设备操作

- 松开水枪扳手。
- 推上喷枪上的安全装置。
- 如，长时间（5 分钟以上）运作中断时，将设备开关设定为“0/OFF”。

## 结束设备操作

### △ 小心

当系统中无可用压力，就要把高压软管从手持喷枪或设备上拆下来。

- 用洗涤剂作业后：设备开动约 1 分钟直至冲洗干净。
- 松开水枪扳手。
- 将设备设定为关闭“0/OFF”。
- 关闭水龙头。
- 按压水枪扳手以除去在设备系统中残留的压力。
- 推上喷枪上的安全装置。
- 自供水处分离设备。

## 运输

### △ 小心

受伤和损坏危险！

运输时要注意设备的重量。

### 手动搬运

→ 握住手柄拉高并提起设备。

### 车辆运输

→ 确保设备不会滑倒和倾覆。

## 储存

### △ 小心

受伤和损坏危险！

存放时要注意设备的重量。

### 设备储存

长期存放之前，如在冬季特别要注意维护一章的提示。

- 将触发枪与高压软管断开。
- 将高压软管和设备的高压连接点分开。
- 将喷射管从高压喷枪上拆开。
- 完全排空设备内的水：打开不带高压软管和供水连接装置的设备（最多1分钟），等待直至无水从高压连接部位出来时。关闭设备。
- 将设备和配件装载到存储箱里。

### 防霜冻

#### 注意

霜冻会损坏未完全清空的清洁器和附件。

完全清空设备和附件，防止霜冻损害。

避免损害：

- 机器及所有附件应在防霜的室内保管。

## 保养与维护

### △ 危险

电击危险。

- 在对机器进行任何操作之前，请务必先关闭设备并将电池组移除。

## 清洗水接口的滤网

定期清洗水接口的滤网。

#### 注意

不允许损坏滤网。

#### 图 11

- 从水接口上拆下联轴器。
- 用平嘴钳取出滤网。
- 把滤网放在自来水下清洗。
- 重新将滤网装入水接口。

## 清洁抽吸软管的滤水器

定期清洁抽吸软管中的滤网。

#### 注意

过滤器内的滤网不得损坏。

切勿将滤网从滤水器中取下！

#### 图 12

- 从抽吸软管上手动取下滤水器。
- 清洁自来水下面的滤水器。
- 将滤水器和抽吸软管重新接上。

## 故障排除

### △ 危险

电击危险。

- 在对机器进行任何操作之前，请务必先关闭设备并将电池组移除。

通过下面的简介，您可以纠正小的故障。

如有疑问，请联系 KÄRCHER 公司授权的客户服务中心。

### 设备不运作

- 拉动手持喷枪的控制杆，设备接通。
- 检查电池充电状态。

### 设备压力不足

- 检查供水管输送量是否充足。
- 用尖嘴钳取下水接头中的滤网并用流动的自来水清洗。
- 设备排气：拆开高压软管，打开设备让其运行（最多2分钟），直至流出高压接口的水没有气泡产生。关闭设备并重新连接上高压软管。

### 巨大的压力变化

- 高压清洗：用针除去喷头孔处的杂物，再用水清洗。
- 检查供水连接系统。

## 设备漏水

→ 在技术方面可能存在高压泵少许漏水的情况。漏水量较大时请联系本公司认可的客户服务中心。

## 附件和备件

只使用原厂配件和备件，它们能保证设备的安全和无故障运行。

有关配件和备件的信息请登录  
[www.kaercher.com](http://www.kaercher.com)。

## 质量保证

我们的质量保证条款适用于全球各分公司。在质量保证期内，如果您的产品发生了任何故障，我们都将为您提供免费维修，但是这种故障应当是由于机身材料或制造上的缺陷造成的。请您向经销商或者与您距离最近的经过授权的客户服务中心联系，提出保修请求，并提供相应的产品购买证明文件。

地址可在如下连接中查找：

[www.kaercher.com/dealersearch](http://www.kaercher.com/dealersearch)

## 产品规格 / 参数

### 尺寸和重量

长度	499 毫米
宽度	219 毫米
高度	274 毫米
重量，包括附件	7,7 千克

### 水接头

供水（最大）	1,2 MPa
进水温度（最高）	40 ° C
最大吸入高度	0,5 m
流量（最小）	8 升 / 分

### 功率参数

电压	36 V
功率	450 瓦
工作压力	4 MPa
最大允许压力	5 MPa
水流消耗	3,7 升 / 分
手的震荡值（ISO 5349）	<3,2 m/s <sup>2</sup>
不确定度 K	0,8 m/s <sup>2</sup>
声压等级 L <sub>pA</sub>	63 A 级分贝
声功率级 L <sub>WA</sub>	78 A 级分贝

## 充电器

### 电源连接

电压	100-240 V 50/60 Hz
输出电压	42 V
输出电流	1 A

# 保修卡

尊敬的用户：

非常感谢您选用 Kärcher 公司产品，我们愿竭力为您提供优质的服务。《保修卡》是保修产品的重要凭证，请您仔细填写此卡并妥善保存。如产品需要维修时，请提供此保修卡和发票原件。

购买日期：\_\_\_\_\_ 产品型号：\_\_\_\_\_

用户电话：\_\_\_\_\_ 产品序列号：\_\_\_\_\_

用户地址：\_\_\_\_\_ 经销商盖章：\_\_\_\_\_

服务热线：400-880-1060

服务邮箱：service@karcher.cn

官网地址：www.karcher.cn



扫一扫  
关注官方微信



扫一扫获取  
更多服务信息

# KÄRCHER

makes a difference

《保修卡》涂改无效，遗失不补。

# 保修条款

本条款所属内容是依据《中华人民共和国消费者权益保护法》、《中华人民共和国产品质量法》及其它相关规定编写，仅适用于Kärcher公司在中国大陆销售的家用系列产品。

为了维护您的合法权益，请在购机时索要发票（即财税部门统一监制的发票）及相关凭证。

1. 本产品在正确使用、操作的情况下，如产品确实存在由于材料、设计和制造引起的质量问题，本公司提供保修，自购机之日起，保修期为12个月。
2. 用户申请保修服务时，需携带有效发票原件及保修卡原件，将产品及原装附件一起送至Kärcher授权服务点进行保修。
3. 如果下述任何一种情况发生，消费者将不能享受保修服务（即本保修条款不予适用），但可享受Kärcher公司授权之服务点提供的有偿服务：
  - 1) 超过保修有效期的；
  - 2) 无有效发票原件或保修凭证的，或保修凭证（或发票）与产品实物不符，或保修凭证（或发票）经涂改的；
  - 3) 非按产品使用说明书要求使用、维护、保养产品而造成损坏的；
  - 4) 产品的自然磨损及易损易耗件（包括但不限于外壳、高压管、密封件、喷枪、喷嘴、单向阀、柱塞、吸尘管、刷子、扒头、过滤器、尘袋、传动皮带、齿轮、电池等）；
  - 5) 产品售出后由于运输或搬运造成损坏的；
  - 6) 未经Kärcher公司同意而对产品自行拆卸或自行修理而造成损坏的；
  - 7) 因电压、水源、使用环境不当而导致故障的；
  - 8) 因使用不正确的清洁介质而造成故障的；
  - 9) 由于不可抗力等自然因素造成故障的；
  - 10) 一切未经Kärcher公司许可对产品进行改造的；
  - 11) 产品无原厂标识，或原厂标贴上的订货号、序列号与Kärcher公司所提供的产品订货号、序列号不一致的；
  - 12) 其它因用户原因造成产品故障的。
4. Kärcher公司的家用产品只适用于家庭用途，凡用于非家庭场所，如商用或工业用途等的，将不能享受免费保修服务。
5. 往返Kärcher授权服务点的一切费用由用户自行承担（销售时，经销商有另外承诺的除外），家用系列产品不提供免费上门服务。
6. 保修期内，所有因维修被替换下来的零件、部件和附件等归Kärcher公司所有。
7. 保修期内，如所维修的部件已停产或淘汰，Kärcher公司有权使用同档次或更高档次的产品进行替换。
8. Kärcher公司对产品的保修义务，无论本保修条款或其它书面说明可能隐含或默认的保修义务，都应当被理解为已经包含在本保修条款所列的保修范围和保修期限内。
9. 保修期内，用户按本保修条款享受保修服务，此为用户因产品缺陷所受损失的唯一补救措施；换言之，Kärcher公司对用户的其它直接或间接损失（包括但不限于数据的丢失、期待的利益等）不承担任何责任。
10. Kärcher公司的经销商或其代理人以及Kärcher公司授权的服务点均无权代表Kärcher公司承担超出本保修条款范畴的义务，亦无权放弃Kärcher公司在本保修条款下的任何权力。
11. 中国有关法律的规定适用于本保修条款。
12. Kärcher公司保留调整有关保修信息、产品功能及规范等的权利，恕不另行通知。

凯驰（上海）清洁系统有限公司  
2016年08月16日

## Contents

Contents . . . . .	14
Scope of delivery . . . . .	14
Proper use . . . . .	14
Environmental protection . . . . .	14
Safety instructions . . . . .	15
Description of the Appliance . . . . .	18
Assembly . . . . .	18
Start up . . . . .	18
Operation . . . . .	19
Transport . . . . .	20
Storage . . . . .	20
Care and maintenance . . . . .	21
Troubleshooting . . . . .	21
Accessories and Spare Parts . . . . .	22
Warranty . . . . .	22
Technical specifications . . . . .	22



Please read and comply with these original instructions prior to the initial operation of your appliance and store them for later use or subsequent owners.

## Scope of delivery

The scope of delivery of your appliance is illustrated on the packaging. Check the contents of the appliance for completeness when unpacking.

In the event of missing accessories or any transport damage, please contact your dealer.

## Proper use

This high pressure cleaner is designed for domestic use only.

- for cleaning machines, vehicles, buildings, tools, facades, terraces, gardening tools, etc. by means of a high-pressure water jet (if necessary, with additional cleaning agents).
- with accessories, replacement parts and cleaning agents approved by KÄRCHER. Please observe the information accompanying the cleaning agents.

## Environmental protection

### Notes about the ingredients (REACH)

You will find current information about the ingredients at:

[www.kaercher.com/REACH](http://www.kaercher.com/REACH)



The packaging material can be recycled. Please arrange for the environmentally appropriate disposal of the packaging.



Old appliances contain valuable recyclable materials that should be recycled properly. Please arrange for the environmentally appropriate disposal of the old devices.



Cleaning operations which produce oily waste water, e.g. engine washes, underbody washes, may only be carried out using washing stations equipped with an oil separator.



Work with detergents must only be performed on liquid-tight work surfaces with a connection to the sewer system. Do not let release detergent into waters or earth.



The extraction of water from public waters is prohibited in some countries.

## Safety instructions

Apart from the notes contained herein the general safety provisions and rules for the prevention of accidents of the legislator must be observed.

Warnings and notes that are attached on the appliance provide important notes for the safe operation.

### Hazard levels

#### **△ DANGER**

Pointer to immediate danger, which leads to severe injuries or death.

#### **△ WARNING**

Pointer to a possibly dangerous situation, which can lead to severe injuries or death.

#### **△ CAUTION**

Pointer to a possibly dangerous situation, which can lead to minor injuries.

#### **ATTENTION**

Pointer to a possibly dangerous situation, which can lead to property damage.

### Symbols on the machine



The appliance must not be directly connected to the public drinking water network.



The high pressure jet must not be directed at persons, animals, live electrical equipment or at the appliance itself.

Protect the appliance against frost.

### Safe handling

#### **△ DANGER**

- The user must use the appliance as intended. The person must consider the local conditions and must pay attention to other persons in the vicinity when working with the appliance.
- Check important components, such as high-pressure hose, hand spray gun and safety installations, for damage prior to every operation. Immediately replace damaged components. Do not operate appliance with damaged components.

- High-pressure jets can be dangerous if improperly used. The jet may not be directed at persons, animals, live electrical equipment or at the appliance itself.
- The high-pressure jet must not be directed at other persons or the user himself/herself to clean clothing or footwear.
- Vehicle tyres/tyre valves are susceptible to damage from the high-pressure jet and may burst. The first indication for this is a discolouration of the tyre. Damaged vehicle tyres/tyre valves are perilous. Keep a minimum jet distance of 30 cm during cleaning!
- Keep packaging films away from children, there is a risk of suffocation!
- △ WARNING**
  - Do not use the appliance when there are other persons around unless they are also wearing protective clothing.
  - The appliance must not be operated by children or persons who have not been instructed accordingly.
  - This appliance is not intended for use by persons with limited physical, sensory or mental capacities or lacking experience and/or skills, unless such persons are accompanied and supervised by a person in charge of their safety or they have received precise instructions on the use of this appliance and have understood the resulting risks.
  - Children must not play with this appliance.
  - Supervise children to prevent them from playing with the appliance.
- △ CAUTION**
  - Create stability for the appliance prior to any work on or with the appliance to prevent accidents or damage.
  - The water jet that is emitted from the high-pressure nozzle results in a repulsion power acting on the hand spray gun. Make sure that you have a firm footing and are also holding the hand spray gun and spray lance firmly.
  - Never leave the appliance unattended as long as it is in operation.

## ATTENTION

- *In case of extended breaks, switch off the appliance at the appliance switch.*
- *Do not operate the appliance at temperatures below 0 °C.*

## Charger

### ⚠ DANGER

*Risk of electric shock.*

- *Never touch the mains plug and the socket with wet hands.*
- *Check charger, mains cable and battery pack for damages before every use. Do not use damaged devices and get the damaged parts repaired only by experts. Check extension wires regularly and replace them if damaged.*
- *Do not use the charger if dirty or wet.*
- *Do not operate the charger in explosive environment.*
- *Do not carry the charger by holding the mains cable.*
- *Protect the mains cable against heat, sharp edges, oil and moving parts of the machine.*
- *Avoid using extension wires with multiple sockets and simultaneous operation of multiple devices.*
- *Do not pull the plug from the socket by pulling the mains cable.*
- *Do not cover the charger and keep the air vents of the charger open.*
- *No metal parts should come in contact with battery holders; risk of short circuit.*
- *Do not open the charger. Get repairs done only by authorised experts.*
- *Use the charger only to charge approved battery packs.*
- *Move only clean and dry battery packs on to the battery holder of the charger.*
- *Do not charge battery (primary cells); risk of explosion.*
- *Do not charge the battery pack for longer than 24 hours, continuously.*

## Battery Pack

- *Avoid contact with fluids oozing out of defective battery packs. Rinse with water in case of accidental contact with fluid. Consult a doctor if fluid comes into contact with eyes.*
- *Do not charge damaged battery packs. Replace damaged battery packs.*
- *Do not store battery packs along with metal objects; risk of short circuit.*
- *Do not use the battery pack if dirty or wet.*
- *The mains voltage must match the voltage mentioned on the type plate of the charger.*
- *Do not charge the battery pack in explosive atmospheres.*
- *Protect the battery pack against heat, sharp edges, oil and moving unit parts.*
- *Do not cover the battery pack during charging and keep the ventilation slits clear.*
- *No metal parts may touch the contacts of the battery pack, risk of short circuit.*
- *Do not open the battery pack. Get repairs done only by authorised experts.*
- *Use the battery pack only with the approved charger.*
- *Do not dispose off battery packs by throwing them into fire or through household waste.*

## Other risks

### ⚠ DANGER

- *The appliance may not be operated in explosive atmospheres.*
- *Never use the appliance to clean objects containing hazardous substances (e.g. asbestos).*
- *Do not spray flammable liquids.*
- *Never draw in fluids containing solvents or undiluted acids and solvents! This includes petrol, paint thinner and heating oil. The spray mist is highly inflammable, explosive and poisonous. Do not use acetone, undiluted acids and solvents, as they corrode the materials used on the appliance.*



- *Keep packaging films away from children, there is a risk of suffocation!*

**⚠ WARNING**

- *According to applicable regulations, the appliance must never be used on the drinking water net without a system separator. Ensure that the connection of your building water installation on which the high-pressure cleaner is operated is equipped with a system separator pursuant to EN 12729 Type BA.*
- *Water that has flown through a system separator is no longer classified as drinking water.*
- *High-pressure hoses, fixtures and couplings are important for the safety of the appliance. Only use high-pressure hoses, fixtures and couplings recommended by the manufacturer.*
- *When disconnecting the supply or high pressure hose, water may leak from the connections after operation.*

**⚠ CAUTION**

- *Mind the weight of the appliance when selecting the storage location and during transport (see technical data) to prevent accidents or injuries.*

### Working with detergent

**⚠ WARNING**

- *This appliance was designed to be used with detergents which are supplied or recommended by the manufacturer. The use of other detergents or chemicals may compromise the safety of the appliance.*
- *The improper use of detergents can cause severe injuries or toxication.*
- *Store detergents away from the reach of children.*

### Personal protective equipment

**⚠ CAUTION**

- *Wear protective clothing and safety goggles to protect against splash back containing water or dirt.*
- *During the use of high-pressure cleaners aerosols can develop. Inhaling aerosols can cause health damage. Depending on the application, completely shielded nozzles (e.g. surface cleaner) that significantly reduce the emission of aqueous aerosols can be used for high-pressure cleaning. The use of such shielding is not possible with all applications. If the use of a completely shielded nozzle is not possible, a respirator of the category FFP 2 or the like should be used, depending on the environment to be cleaned.*

### Safety Devices

**⚠ CAUTION**

- *Safety installations serve the protection of the user and may not be modified or bypassed.*

### Appliance switch

The appliance switch prevents unintentional operation of the appliance.

### Lock trigger gun

This lock locks the lever of the trigger gun and prevents the inadvertent start of the appliance.

### Overflow valve with pressure switch

The overflow valve prevents the permissible working pressure from being exceeded. If the lever on the trigger gun is released the pressure switch turns off the pump, the high pressure jet is stopped. If the lever is pulled the pump is turned on again.

## Description of the Appliance

### Illustrations on Page 2

- 1 Connection for water supply with filter
- 2 High pressure connection
- 3 Switch „ON/OFF“ / „ECO“
- 4 Battery charge indicator
- 5 Indicator lamp Eco mode
- 6 Carrying handle
- 7 Storage for spray lance
- 8 Battery pack
- 9 Battery compartment
- 10 Trigger gun
- 11 Lock trigger gun
- 12 Clamp for high pressure hose
- 13 High pressure hose
- 14 Charger
  - A LED1
  - B LED2
- 16 Spray lance with high pressure nozzle
- 17 Suction hose
- 18 Coupling element for water connection

---

#### \*\* not included in the scope of delivery

- 15 Foam nozzle with detergent container
- 19 Water supply hose  
Use a fabric reinforced water hose.  
Minimum length 5 m.  
Minimum diameter, 1/2 inches (13 mm).

### Special accessories

Special accessories expand the possibilities of using your appliance. Please contact your KÄRCHER dealer for further information.

## Assembly

Mount loose parts delivered with appliance prior to start-up.

### Illustrations on Page 2

#### Illustration **A**

- Insert the battery into the battery compartment.

#### Illustration **B**

- Screw the coupling element to the water connection on the appliance.

#### Illustration **C**

- Pull out the clamp for the high pressure hose from the hand spray gun.

#### Illustration **D**

- Connect high pressure hose to trigger gun.
- Push the clamp in until it locks. Check the secure connection by pulling on the high-pressure hose.

**Note:** The battery is partially charged at the time of delivery. Charge it before appliance startup and then as and when required. Please follow the instructions of the battery charger.

## Start up

- Park the appliance on an even surface.

#### Illustration **E**

- Connect the high pressure hose to the high pressure connection of the appliance.

### Water supply

According to the applicable regulations, the appliance must never be used on the drinking water supply without a system separator. Use a suitable system separator manufactured by KÄRCHER; or, as an alternative, a system separator as per EN 12729 Type BA.

Water flowing through a system separator is considered non-drinkable.

#### **CAUTION**

Always connect the system separator to the water supply, never directly to the appliance!

#### **ATTENTION**

Impurities in the water can damage the high-pressure pump and the accessories. For protection, the use of the KÄRCHER water filter (optional accessory, order no. 4.730-059) is recommended.

### Water supply from mains

For connection values, see type plate/technical data.

Observe regulations of water supplier.

#### Illustration **F**

- Attach the water supply hose to the coupling on the water connection.
- Connect the water supply hose to the water supply.
- Completely open the water tap.



## Drawing in water from open reservoirs

- Screw the suction hose into the water connection of the appliance and insert it into the water source (e.g. rainwater drum).
- Separate the high pressure hose from the high pressure connection of the appliance.
- Switch the appliance on (I/ON) for a max. of 2 minutes and wait until the water exits the high-pressure connection without bubbles.
- Turn off the appliance "0/OFF".

## Battery operation

- Turn on the appliance "I/ON".  
The displays for battery operation and mains operation are subjected to a brief test routine and will illuminate consecutively.
- The display for battery operation illuminates continuously and shows the battery status.  
The appliance is now ready for operation.

Display battery operation		Charging status of the battery pack
green LED	red LED	
3	0	70% - 100%
2	0	40% - 70%
1	0	20% - 40%
0	3 blinking	10% - 20%
0	3	1% - 10%

- Battery empty: Motor will be switched off, the three red LEDs will blink and then shine ca. 60 seconds - then the appliance will shut off on its own.
- Engine or battery pack is too hot: the appliance will shut off on its own.

## Charging the battery

- Connect charging station with power cord and plug into the mains socket.
- Insert the battery pack into the charger.

	LED 1	LED 2
No battery pack in the charger	OFF	OFF
Low voltage protection	OFF	Blinking
Charging process	Blinking	OFF
Charging process completed	ON	OFF
Temperature too high	OFF	ON
Short-circuit	OFF	ON

## Operation

### ATTENTION

*Dry running of more than 2 minutes leads to damage of the high-pressure pump. If the appliance does not build up pressure within 2 minutes, switch the appliance off and proceed in accordance with the instructions in Chapter "Troubleshooting".*

## Operating modes

- Pressing the „ON-/OFF“-switch starts the appliance in maximum mode.
- Pressing the „ON-/OFF“-switch again switches to the ECO-mode.
- Pressing the „ON-/OFF“-switch again switches the appliance off.

## High pressure operation

### △ CAUTION

*Keep a distance of at least 30 cm when using the jet for cleaning painted surfaces to avoid damage.*

Illustration 

- Push the spray lance into the trigger gun and fasten it by turning it through 90°.
- Turn on the appliance "I/ON".
- Unlock the lever on the trigger gun.
- Pull on the lever of the trigger gun; the device will switch on.

**Note:** Release the lever of the trigger gun; the device will switch off again. High pressure remains in the system.

## Operation with detergent

### **⚠ DANGER**

When using detergents, the material data safety sheet issued by the detergent manufacturer must be adhered to, especially the instructions regarding personal protective equipment.

Illustration 

- Fill the detergent solution in the detergent tank of the foam nozzle (observe dosage instructions on the packaging of the detergent).
- Connect the detergent tank to the foam nozzle.
- Connect the foam nozzle to the trigger gun.

### **Recommended cleaning method**

- Spray the detergent sparingly on the dry surface and allow it to react, but not to dry.
- Spray off loosened dirt with the high pressure jet.

## Interrupting operation

- Release the lever on the trigger gun.
- Lock the lever on the trigger gun.
- During longer breaks (more than 5 minutes), also turn the appliance off using the "0/OFF" switch.

## Finish operation

### **⚠ CAUTION**

Only separate the high-pressure hose from the hand spray gun or the appliance when there is no pressure in the system.

- After operation with detergent: Run the machine for approximately 1 minute for a clear rinse.
- Release the lever on the trigger gun.
- Turn off the appliance "0/OFF".
- Turn off tap.
- Press the lever on the trigger gun to release any remaining pressure in the system.
- Lock the lever on the trigger gun.
- Detach the appliance from the water supply.

## Transport

### **⚠ CAUTION**

Risk of personal injury or damage!  
Mind the weight of the appliance during transport.

### **When transporting by hand**

- Lift appliance by the carrying handle and carry it.

### **When transporting in vehicles**

- Secure the appliance against shifting and tipping over.

## Storage

### **⚠ CAUTION**

Risk of personal injury or damage!  
Consider the weight of the appliance when storing it.

### **Storing the Appliance**

Prior to extended storage periods, as during the winter, also observe the instructions in the Care section.

- Disconnect the trigger gun from the high-pressure hose.
- Separate the high pressure hose from the high pressure connection point of the appliance.
- Detach spray lance from the trigger gun.
- Completely drain all water from the appliance: Switch the appliance on with detached high pressure hose and detached water supply (max. 1 minute) and wait, until no more water exits at the high pressure connection. Turn off the appliance.
- Stow appliance and accessories in the storage box.

## Frost protection

### ATTENTION

*Appliances and accessories that are not completely drained can be destroyed by frost. Completely drain appliance and accessories and protect them against frost.*

To avoid damage:

- Store the appliance and the entire accessories in a frost free room.

## Care and maintenance

### ⚠ DANGER

*Risk of electric shock.*

- *Prior to all work on the appliance, switch off the appliance and remove the battery pack.*

## Clean the sieve in the water connection

**Clean the sieve in the water connection regularly.**

### ATTENTION

*The sieve must not be damaged.*

Illustration 

- Remove coupling from the water connection.
- Pull the sieve out using flat pliers.
- Clean the sieve under running water.
- Reinsert the sieve into the water connection.

## Clean the water filter of the suction hose

**Clean the sieve in the suction hose regularly.**

### ATTENTION

*The sieve within the filter must not be damaged.*

*Do not remove the sieve from the water filter!*

Illustration 

- Remove water filter from the suction hose manually.
- Clean the water filter under running water.
- Reattach the water filter to the suction hose.

## Troubleshooting

### ⚠ DANGER

*Risk of electric shock.*

- *Prior to all work on the appliance, switch off the appliance and remove the battery pack.*

You can rectify minor faults yourself with the help of the following overview.

If in doubt, please consult the authorized customer service.

## Appliance is not running

- Pull on the lever of the trigger gun; the device will switch on.
- Check charging status of battery.

## Pressure does not build up in the appliance

- Check water supply for adequate delivery rate.
- Pull out the sieve in the water connection using flat-nose pliers and clean under running water.
- Appliance ventilation: Switch the appliance on with the high-pressure hose detached and operate (max. 2 minutes) until the water exits the high-pressure connection without bubbles. Switch off appliance and reconnect high-pressure hose.

## Strong pressure fluctuations

- Clean high-pressure nozzle: Remove dirt and debris from the nozzle bore, using a needle and rinse through with water from the front.
- Check water flow quantity.

## Appliance is leaking

- Slight leakage from the appliance pump is normal. If the leakage increases contact the authorized customer service.

## Accessories and Spare Parts

Only use original accessories and spare parts, they ensure the safe and trouble-free operation of the device.

For information about accessories and spare parts, please visit [www.kaercher.com](http://www.kaercher.com).

## Warranty

The warranty terms published by the relevant sales company are applicable in each country. We will repair potential failures of your appliance within the warranty period free of charge, provided that such failure is caused by faulty material or defects in manufacturing. In the event of a warranty claim please contact your dealer or the nearest authorized Customer Service centre. Please submit the proof of purchase.

Addresses can be found under:

[www.kaercher.com/dealersearch](http://www.kaercher.com/dealersearch)

## Technical specifications

### Dimensions and weights

Length	499 mm
Width	219 mm
Height	274 mm
Weight, ready to operate with accessories	7,7 kg

### Water connection

Max. feed pressure	1,2 MPa
Max. feed temperature	40 °C
Suction height (max.)	0,5 m
Min. feed volume	8 l/min

### Performance data

Voltage	36 V
Power	450 W
Working pressure	4 MPa
Max. permissible pressure	5 MPa
Water flow rate	3,7 l/min
Hand-arm vibration (ISO 5349)	<3,2 m/s <sup>2</sup>
Uncertainty K	0,8 m/s <sup>2</sup>
Sound pressure level $L_{pA}$	63 dB(A)
Sound power level $L_{WA}$	78 dB(A)

### Charger

#### Electrical connection

Voltage	100-240 V 50/60 Hz
Output voltage	42 V
Output current	1 A





<http://www.kaercher.com/dealersearch>



**Alfred Kärcher GmbH & Co. KG**

Alfred-Kärcher-Str. 28 - 40

71364 Winnenden (Germany)

Tel.: +49 7195 14-0

Fax: +49 7195 14-2212